



Highview Gardens, Potters Bar, Hertfordshire, EN6

£558,500

- **THREE DOUBLE BEDROOMS**
- **OPEN PLAN KITCHEN LOUNGE
DINER**
- **BI-FOLDING DOORS**
- **OFF STREET PARKING**
- **RECENTLY BUILT HOME**
- **DOWNSTAIRS WC**
- **SIDE ACCESS**
- **PRIVATE REAR GARDEN**

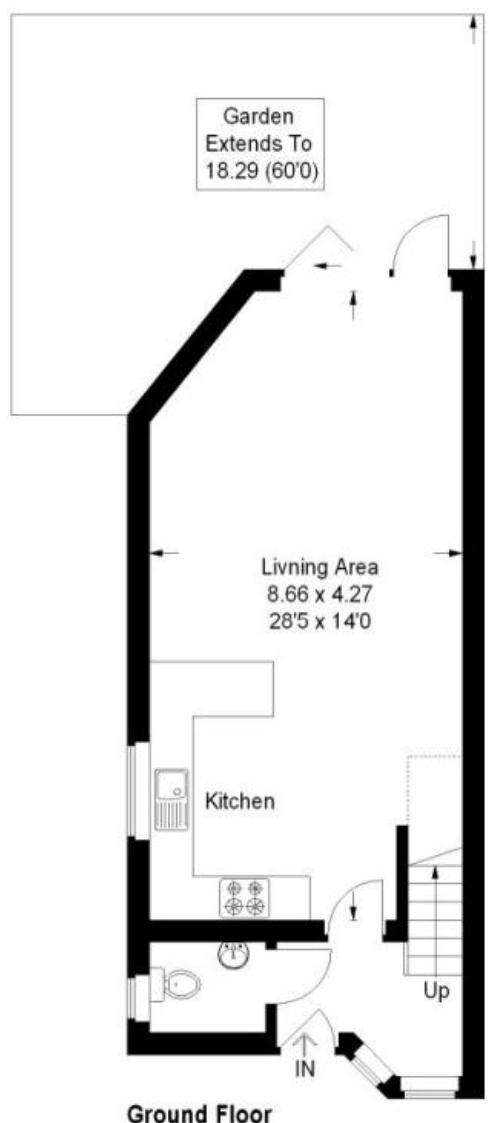
Highview Gardens, Potters Bar, Hertfordshire, . EN6

£558,500 Freehold

A delightful three double bedroom end of terrace modern family home ideally located within walking distance to Potters Bar High Street, locals shops and amenities and with a stones throw from Oakmere Park.

This home was built in 2016 and benefits from a spacious open plan kitchen / dining / living room with bi-folding doors over looking the garden, and a downstairs WC. The first floor consists of modern bathroom and two double bedrooms, and the second floor a double bedroom with views over the garden.

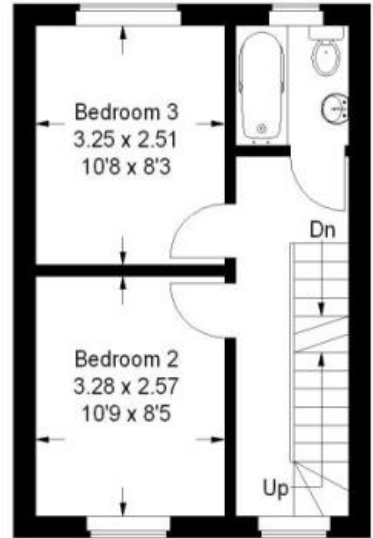
Viewing advised.



Approximate Gross Internal Area
Ground Floor = 43.9 sq m / 472 sq ft
First Floor = 29.0 sq m / 312 sq ft
Second Floor = 20.9 sq m / 225 sq ft
Total = 93.8 sq m / 1009 sq ft



= Reduced headroom below 1.5 m / 5'0



First Floor



Second Floor

This plan is for layout guidance only. Not drawn to scale unless stated. Windows and door openings are approximate. Whist every care is taken in the preparation of this plan, please check all dimensions, shapes and compass bearings before making any decisions reliant upon them.

© CJ Property Marketing Ltd Produced for Countrywide

