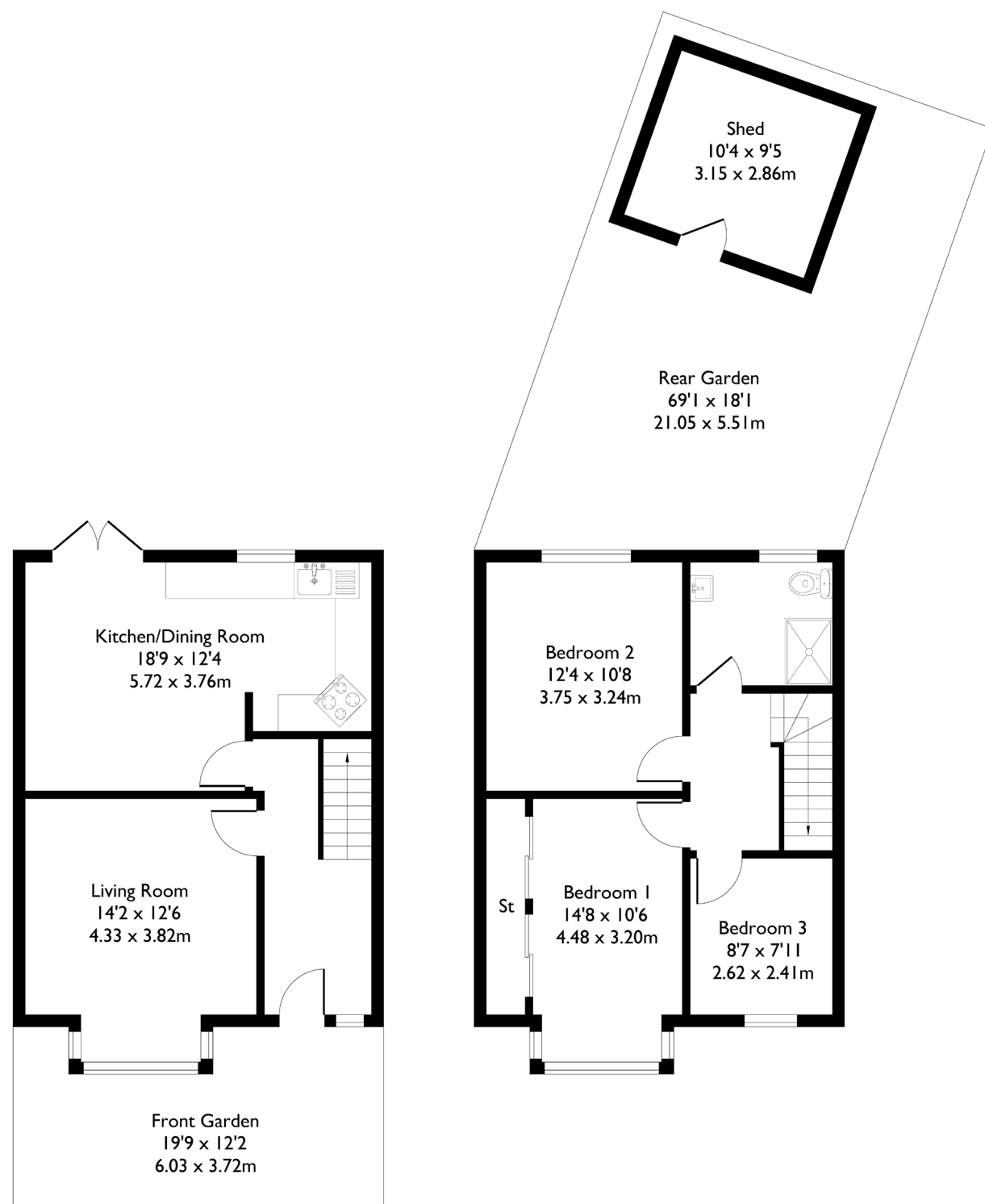
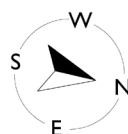


Clayponds Avenue, Brentford, TW8

Approximate Floor Area = 97.2 sq m / 1046 sq ft



3 BEDROOM HOUSE

Clayponds Avenue, TW8

£675,000

Welcome to this well-presented three-bedroom terraced home in Brentford.

Upon entering, you're greeted by a wide hallway with a reception room to the left. The property then flows through to a spacious dining and living area, leading into the kitchen, with double doors opening onto a generously sized rear garden — ideal for entertaining or family living.

FEATURES

- Three Bedrooms
- One Bathroom
- Separate Kitchen/Living Space
- Private Garden with Outhouse
- Potential to Extend (STPP)
- South Ealing Station
- Little Ealing Primary School/ Lionel Primary School
- EPC Rating D



3 BEDROOM HOUSE

Clayponds Avenue TW8

Upstairs, you'll find a family bathroom, two large double bedrooms, and a further single bedroom.

The property also offers excellent potential to extend to the rear and into the loft, subject to the usual planning permissions. The current owners have maintained the home carefully and have made thoughtful improvements over the years, including reconfiguring door openings, adding additional sockets, and redecorating to keep the space fresh and practical for both themselves and future occupants.

Ideally located just moments from the Great West Road, the property offers easy access into Central London. It is also within reach of well-regarded local schools, with South Ealing Station approximately a 15-minute walk away.

EPC Rating D.

