



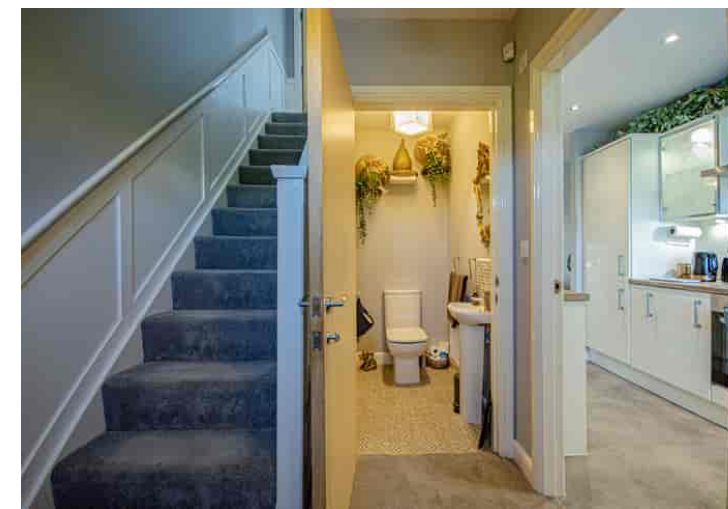


An immaculate, three bedroom, three story town-house on the popular Winnington Urban Village.

- Three Story Town-House
- Open Plan Living Room
- Modern Fitted Kitchen
- Three Bedrooms
- Two Bath/Shower Rooms
- Landscaped Garden
- Garage & Driveway

Description

An immaculate, three story, town-house, located on the popular Winnington Urban Village. The property has been greatly improved by the current owners and is offered in excellent decorative order throughout. With gas central heating and PVCu double glazed windows, comprises: Entrance hall, cloakroom/WC, fitted kitchen and open plan living room on the ground floor. Two bedrooms, bathroom and a landing on the first floor and on the second floor there is a master bedroom with walk-in wardrobe and en-suite shower room. Externally there is a small ornamental garden to the front and to the rear there is a landscaped garden with extensive decking, pagoda and artificial grass. There is also a garage located to the side of the house and a two car driveway.



Location

Local amenities are well catered for with shops at the local centre on Winnington Urban Village, which offer everything you could want or need. Winnington Park Community Primary School (Ofsted Good) serves the area and there are two local high schools located in Hartford and Weaverham. Three railway stations serve the area with the West Coast Main Line service running through Hartford, enabling access to London within two hours. Trains to Manchester and Chester run from Northwich and Greenbank stations. The A556 and A49 easily facilitate access to the region's major road network with Manchester and Liverpool airports both within 20 miles. Nearby Northwich caters for a more comprehensive range of amenities, including leading supermarkets with Waitrose, Sainsbury's and Tesco all represented.

Tenure

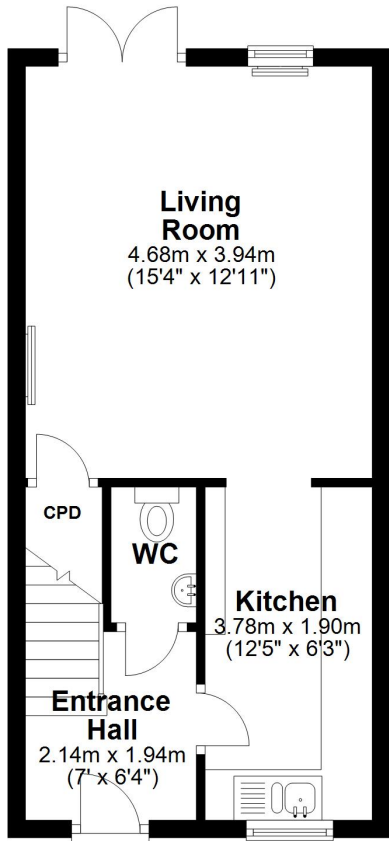
LEASEHOLD. 999 years form 1st January 2011

EPC Rating: C



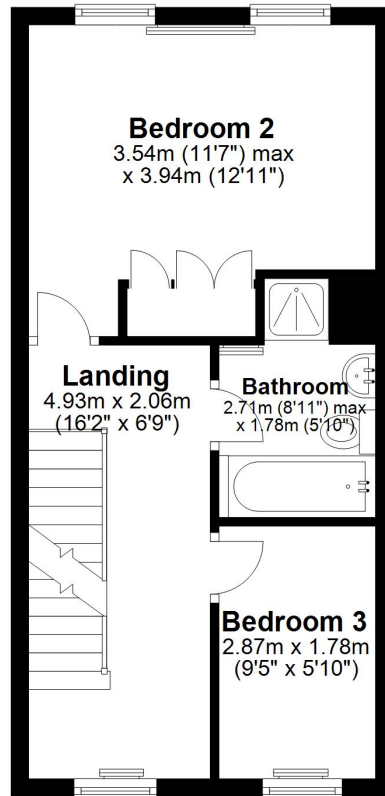
Ground Floor

Approx. 33.7 sq. metres (363.2 sq. feet)



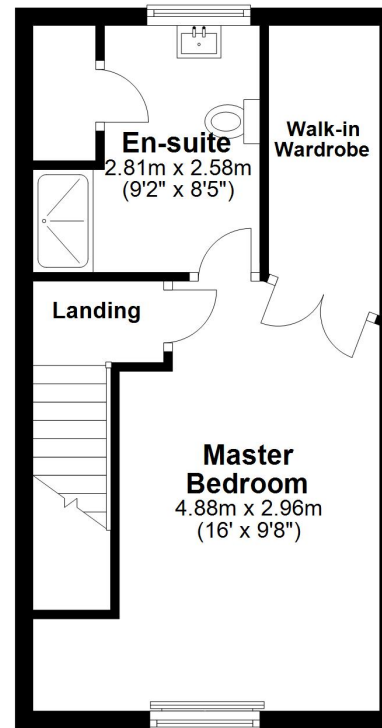
First Floor

Approx. 28.7 sq. metres (308.5 sq. feet)



Second Floor

Approx. 30.7 sq. metres (330.3 sq. feet)



Total area: approx. 93.1 sq. metres (1002.1 sq. feet)