



165 Jackmans Place, Letchworth Garden City, Hertfordshire, SG6 1RG

£375,000

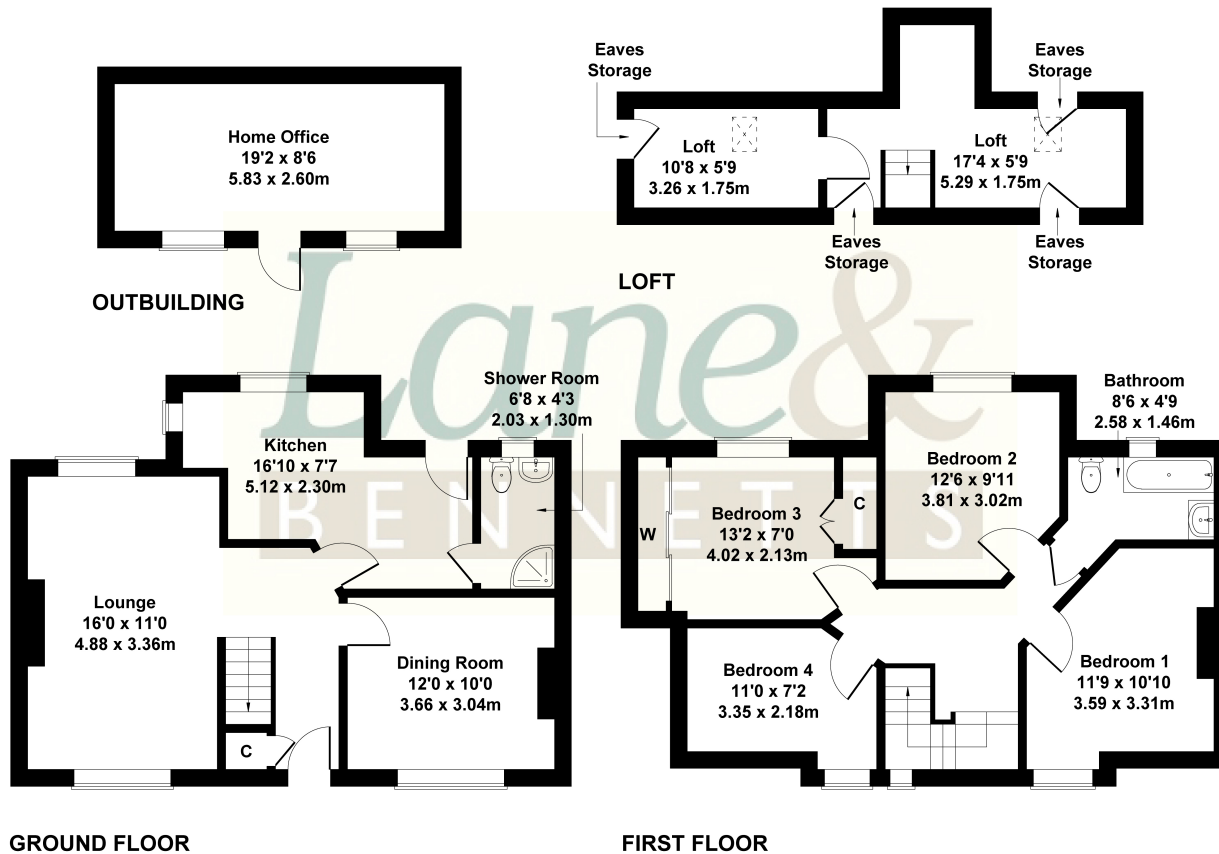
Lane & Bennetts are delighted to bring to the market this fabulous family home. Located just 12 minutes walk to town and less than 20 minutes walk to the station, this home has been cleverly re-modelled to accommodate family needs. The gated path to the front door of the property sets the 'cottage' scene for this lovely home. The well-cared for front and rear gardens are bordered with mature hedging. The tiled entrance hall houses a useful cloaks cupboard and handy under stairs storage area and doors to all rooms. There is a dual aspect lounge room with a feature fireplace and wood flooring. The good sized, characterful dining room overlooks the picturesque front garden. The re-fitted kitchen has been re-modelled and designed to maximise storage and create a peninsular breakfast bar. The downstairs cloakroom has been upgraded by the current owners to include the addition of a useful shower cubicle. The first floor has been re-imagined to create four bedrooms and updated the family bathroom. The landing houses hatch to loft, with sturdy pull down ladder, converted to create accessible storage / office area / play space.



## 165 Jackmans Place

Approximate Gross Internal Area  
1528 sq ft - 142 sq m

- FOUR BEDROOM FAMILY HOME
- CHAIN FREE
- TWO RECEPTION ROOMS
- DOWNSTAIRS SHOWER ROOM & FIRST FLOOR BATHROOM
- MODERN FITTED KITCHEN BREAKFAST ROOM
- LARGE OUTBUILDING / OFFICE
- 12 MINUTE WALK TO TOWN / LESS THAN 20 MINUTES TO STATION
- USEABLE LOFT SPACE
- FRONT & REAR GARDENS
- Council Tax Band: C | EPC: TBC | Tenure: Leasehold - 125 years from 2002



Not to Scale. Produced by The Plan Portal 2024  
For Illustrative Purposes Only.

