



52 Groveside, Henlow, Bedfordshire, SG16 6AP

£275,000

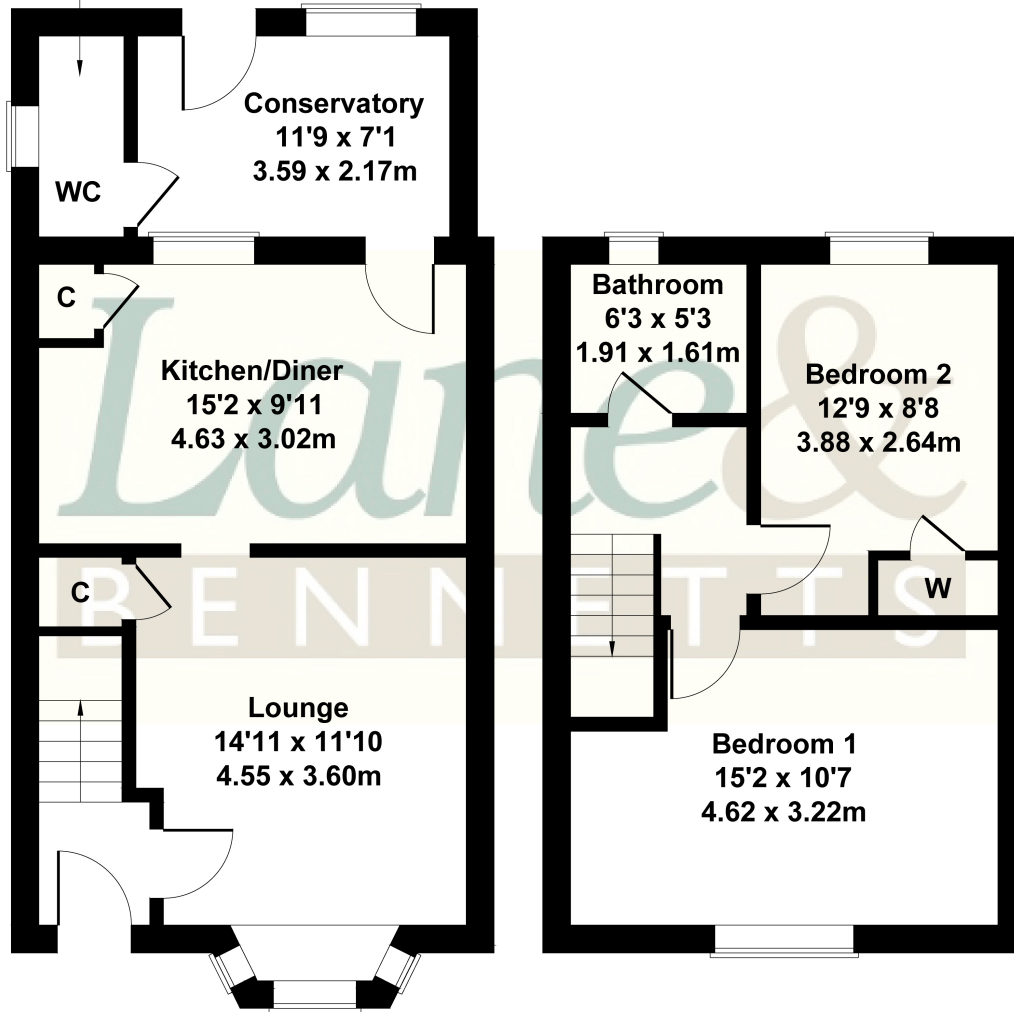
Two bedroom terraced house situated in a great location being just a few minutes from the local park, good local schools and within walking distance of Arlesey railway. Good sized lounge, spacious kitchen/diner and a useful conservatory with downstairs cloakroom/shower room. Upstairs are two double bedrooms and a bathroom. Enclosed garden to rear with shed and greenhouse. In need of some updating - great potential NO CHAIN



# Groveside Henlow Beds SG16 6AP

Approximate Gross Internal Area  
850 sq ft - 79 sq m

Shower Room  
7'0 x 3'0  
2.13 x 0.92m



GROUND FLOOR

FIRST FLOOR

Not to Scale. Produced by The Plan Portal 2023  
For Illustrative Purposes Only.

- TWO BEDROOM TERRACED COTTAGE
- GOOD SIZE LOUNGE WITH BAY WINDOW
- SPACIOUS KITCHEN/DINER
- CHAIN FREE
- CONSERVATORY & DOWNSTAIRS TOILET/SHOWER ROOM
- TWO DOUBLE BEDROOMS
- ENCLOSED REAR GARDEN
- WALKING DISTANCE OF ARLESEY RAILWAY STATION
- CLOSE TO PARK + GOOD SCHOOLS
- IN NEED OF SOME UPDATING BUT OFFERS GREAT POTENTIAL

