



Wellington Place

Bassingbourn,
SG8 5JQ

Freehold - OIEO £550,000

country
properties

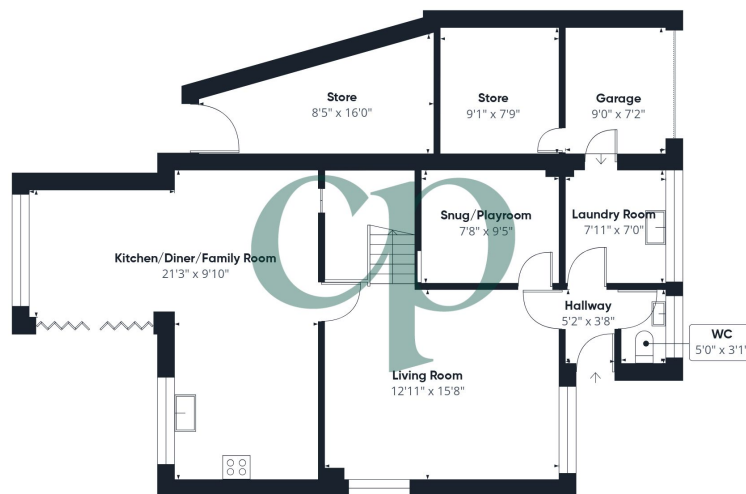
This home exudes sophistication, offering light-filled, airy rooms and well-designed entertaining spaces. Featuring four generous double bedrooms, an impressive four-piece family bathroom, and ample outdoor storage, this turnkey property is finished to a high standard throughout and is a must-see.

- Detached Family Home
- Four Double Bedrooms
- Beautifully Presented throughout
- Large Open Plan Kitchen/Dining/Family Room
- Two Reception Rooms
- Separate Utility/Boot Room
- Extensive Driveway
- South Facing Garden









Floor 0



Floor 1

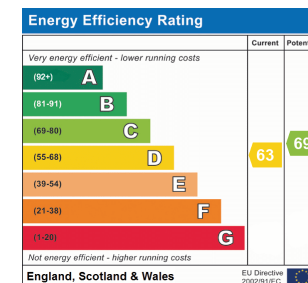


Approximate total area⁽¹⁾
1613 ft²

(1) Excluding balconies and terraces

Calculations reference the RICS IPMS 3C standard. Measurements are approximate and not to scale. This floor plan is intended for illustration only.

GIRAFFE360



All measurements are approximate and quoted in metric with imperial equivalents and for general guidance only and whilst every attempt has been made to ensure accuracy, they must not be relied on. The fixtures, fittings and appliances referred to have not been tested and therefore no guarantee can be given and that they are in working order. Internal photographs are reproduced for general information and it must not be inferred that any item shown is included with the property. For a free valuation, contact the numbers listed on the brochure

Viewing by appointment only

Country Properties | 45, High Street | SG8 9AW

T: 01763 245121 | E: royston@country-properties.co.uk

www.country-properties.co.uk

country
properties

country
properties