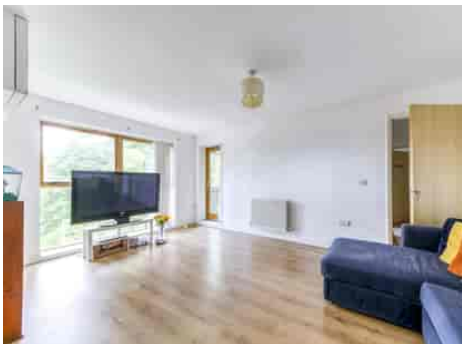


Truuli



Callender Court, Harry Close, Croydon, Surrey, CR0 2NJ

£280,000 Leasehold

- Two bed modern apartment
- Good condition throughout
- Close to transport and local amenities
- Modern fitted kitchen
- En suite shower room
- Large reception room
- Wood flooring throughout
- Private balcony
- Unfurnished
- EPC Rating: C

Southbridge Place, Croydon, Surrey, CR0 4HA

Tel: 0330 043 0002

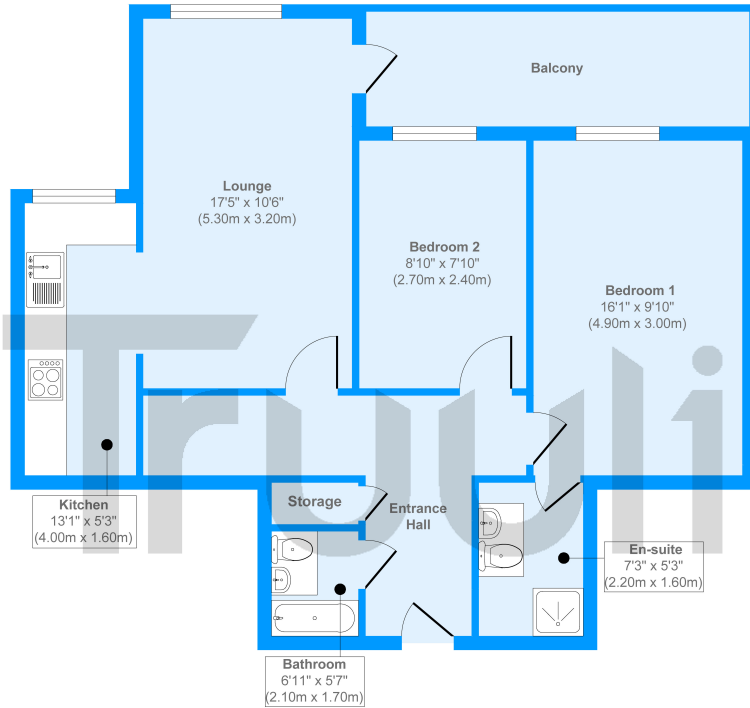
Email: save@truuli.co.uk Web: www.truuli.co.uk

Callender Court, Harry Close, Croydon, Surrey, CR0 2NJ

£280,000 Leasehold

*** Vendors comments*** "We fell in love with the property for its location, quietness and quality - for us, looking for a buy-to-let property, it ticked all of the boxes that we had in mind for what people look for in a home. It was a short walk from Croydon town centre, which has grown and developed so much in the 8 years since we purchased the flat. The transport links were incredible, allowing us to easily get in and out of central London, as well as enabling easy access to Gatwick and the south."

Harry Close



Floor Plan
Approximate Floor Area
682 sq. ft
(63.44 sq. m)

Approx. Gross Internal Floor Area 682 sq. ft / 63.44 sq. m

Produced by Elements Property

Energy Efficiency Rating		Current	Potential
Very energy efficient - lower running costs			
(92-100)	A		
(81-91)	B		
(69-80)	C	80	80
(55-68)	D		
(39-54)	E		
(21-38)	F		
(1-20)	G		
Not energy efficient - higher running costs			
England, Scotland & Wales		EU Directive 2002/91/EC	

