




Property Cafe
BUYER INCENTIVE
AVAILABLE WHEN YOU VIEW
THIS PROPERTY THROUGH US

Flat 3, 41 Collington Avenue, Bexhill-on-Sea,
East Sussex, TN39 3PX

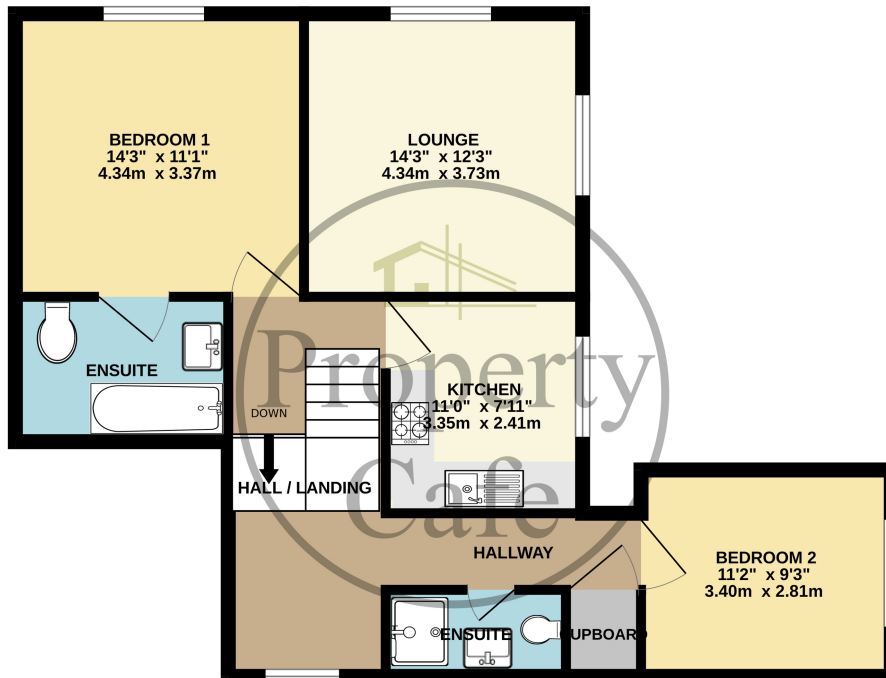
£269,950



- RESIRTITION (HOLIDAY LET'S ONLY)
- Highly Sought after Collington location
- Two Good Size Double Bedrooms
- Both With Modern En-Suite's
- Lovely Panoramic Views & Sea Glimpse
- Spacious Split Level Landing Area
- Beautifully Presented Top Floor Apartment
- Immaculate Lounge With Stunning Views
- Neutral Decoration & Quality Fitted Carpets
- Sought After Collington Location
- Sold With No Onward Chain!
- Long Lease & Low Outgoings
- HOLIDAY LET USEAGE ONLY



2ND FLOOR FLAT
600 sq.ft. (55.7 sq.m.) approx.



COLLINGTON AVENUE - HP59

TOTAL FLOOR AREA : 600 sq.ft. (55.7 sq.m.) approx.

Whilst every attempt has been made to ensure the accuracy of the floorplan contained here, measurements of doors, windows, rooms and any other items are approximate and no responsibility is taken for any error, omission or mis-statement. This plan is for illustrative purposes only and should be used as such by any prospective purchaser. The services, systems and appliances shown have not been tested and no guarantee as to their operability or efficiency can be given.

Made with Metropix 02024

