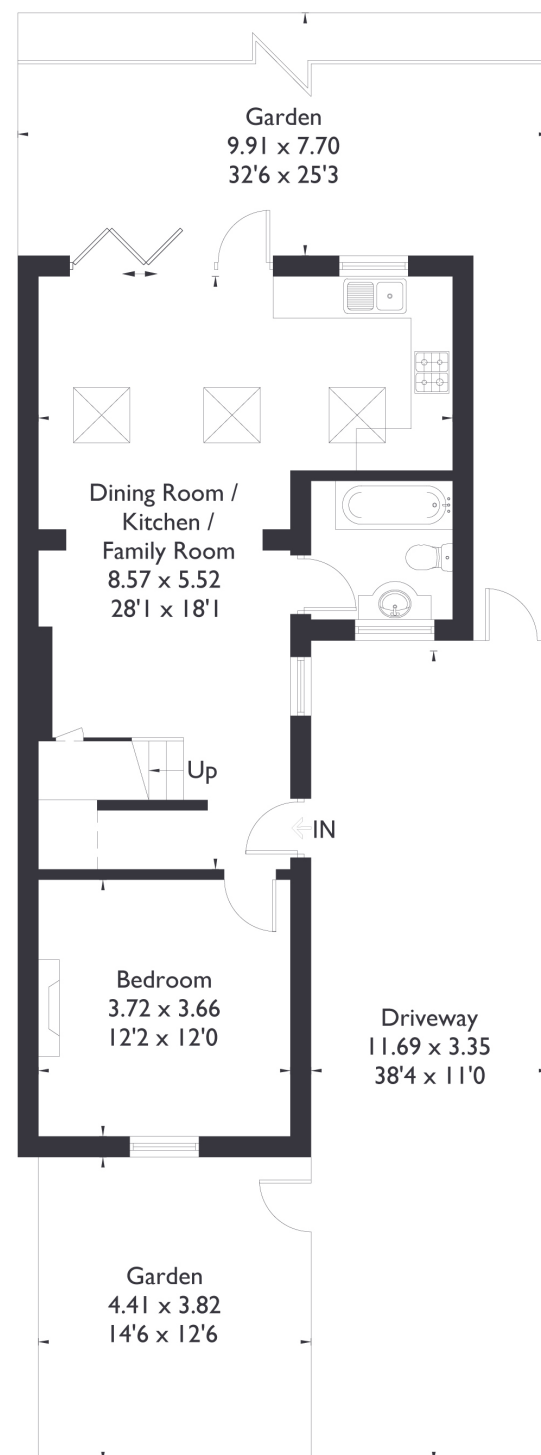
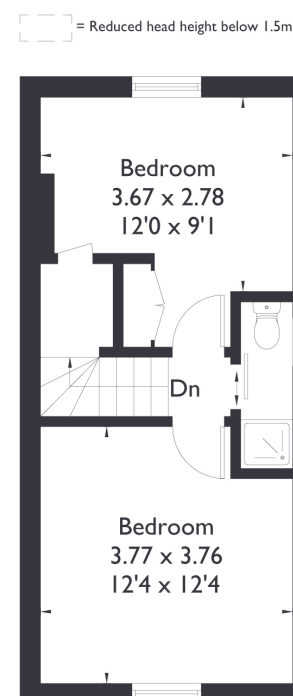


Broomfield Place, W13

Approximate Floor Area = 88.1 sq m / 948 sq ft



Ground Floor



First Floor



3 BEDROOM HOUSE

Broomfield Place, W13

£850,000

Welcome to this delightful two/ can be three bedroom home, ideally situated in a prime West Ealing location, tucked just behind a charming church.

The a spacious open-plan kitchen and living area with large doors that open onto a generous sun-filled garden perfect for relaxing or entertaining.

FEATURES

- Three Bedrooms
- Two Bathrooms
- Open Plan Kitchen/Living
- Off Street Parking Available For Two Cars
- West Ealing Amenities
- West Ealing Station
- Potential To Extend Side (STPP)
- EPC Rating D



3 BEDROOM HOUSE

Broomfield Place, W13

On the ground floor, you'll also find a well sized bathroom. Upstairs offers two double bedrooms and a stylish shower room.

This home further benefits from a private driveway with space for two cars. Conveniently located, you're within easy reach of West Ealing station and amenities, Ealing Broadway's vibrant shops and transport links, and just a short walk from Northfields' popular high street. An ideal choice for those looking to upsize or move into this desirable area. EPC Rating D.

