

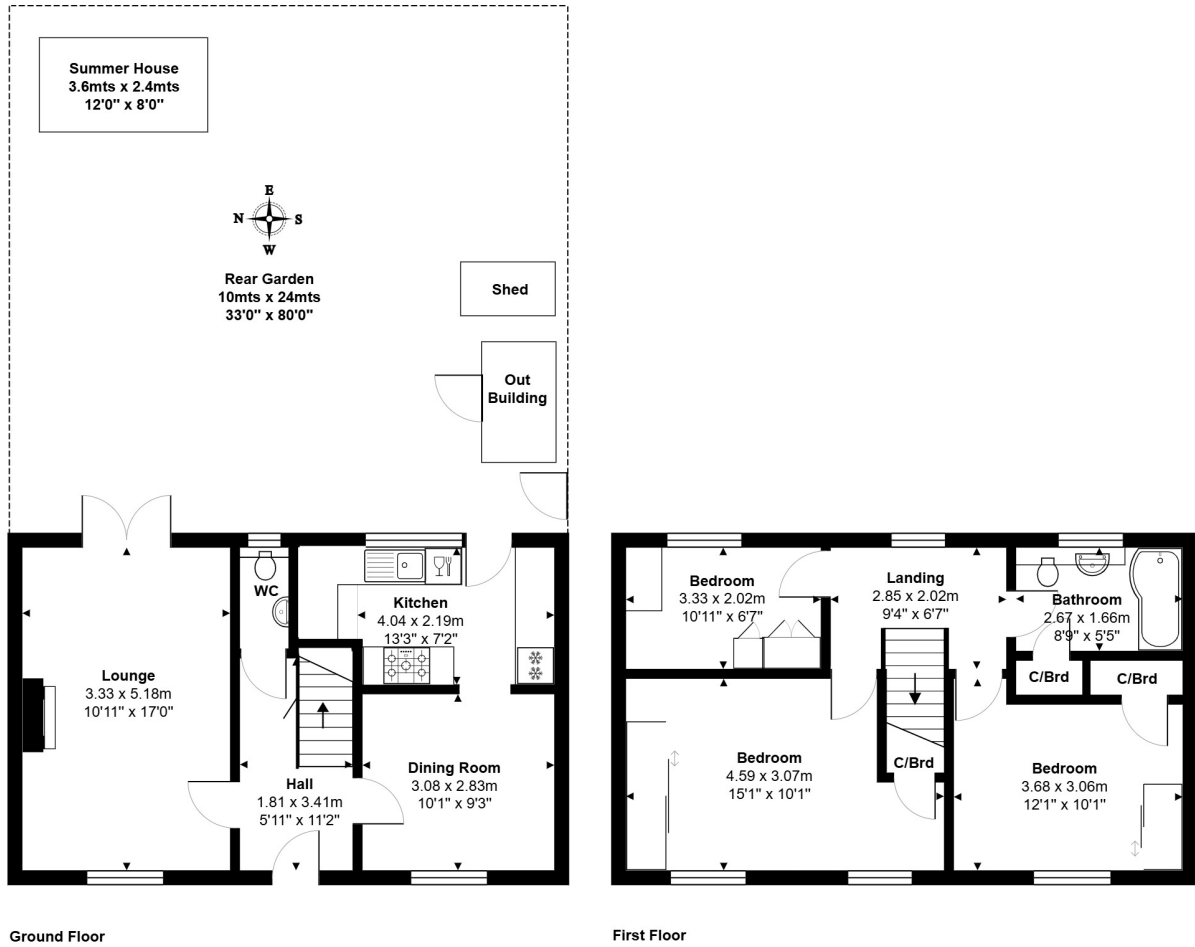


Clare Road, Stanwell, Staines- upon-Thames, Surrey, TW19 7QG

WELL PRESENTED AND SPACIOUS THREE BEDROOM END-TERRACED PROPERTY SITUATED ALONG MUCH SOUGHT AFTER ROAD IDEALLY LOCATED FOR EASY ACCESS TO BOTH STAINES & ASHFORD TOWN CENTRES, LOCAL MOTORWAY NETWORKS & HEATHROW AIRPORT. The property is well presented throughout and benefits from a spacious lounge, modern fitted kitchen, dining room, three well-proportioned bedrooms, modern white bathroom suite, large secluded rear garden and off-street parking. Viewings Highly Recommended!

ROOM DESCRIPTIONS

FLOORPLAN



Total Area: 90.5 m² ... 974 ft²

All measurements are approximate and for display purposes only.