



54 Ridgewood Gardens, Cimla, Neath, SA11 3QF

Asking Price: £185,000

- Two Bedroom End Terrace Home
- Lounge With Attractive Views
- Upstairs Three Piece Family Bathroom
- Fitted Kitchen/Breakfast Room
- Two Double Bedrooms
- Off Road Driveway Parking And Garage



Entrance Hall

Side aspect glazed door with glazed flanking window, stairs to first floor landing, doors to:-

Lounge

3.92m (max) x 4.33m (12' 10" (max) x 14' 2") Front aspect bay glazed window with far reaching views, television point, radiator

Kitchen/Breakfast Room

2.57m x 4.33m (8' 5" x 14' 2") Rear aspect glazed window, rear aspect opaque glazed door with opaque glazed flanking window, range of eye and base level cupboards and drawers, inset four ring gas hobs with oven under and extractor hood over, space for upright fridge freezer, space and plumbing for washing machine, sink & drainer with mixer tap

First Floor Landing

Access to loft, radiator, doors to:-

Bedroom One

4.33m x 2.95m (14' 2" x 9' 8") Two front aspect glazed windows with far reaching views, range of built in wardrobes, radiator

Bedroom Two

4.33m x 2.34m (14' 2" x 7' 8") Rear aspect glazed window, double built in wardrobes, radiator

Family Bathroom

Rear aspect opaque glazed window, three piece suite comprising of, panel enclosed bath with mixer tap and shower over, WC, pedestal wash hand basin with mixer tap, radiator

Outside

To the front of the property is off road parking for three cars leading to a detached garage and pedestrian gate leading to the enclosed and secure rear garden

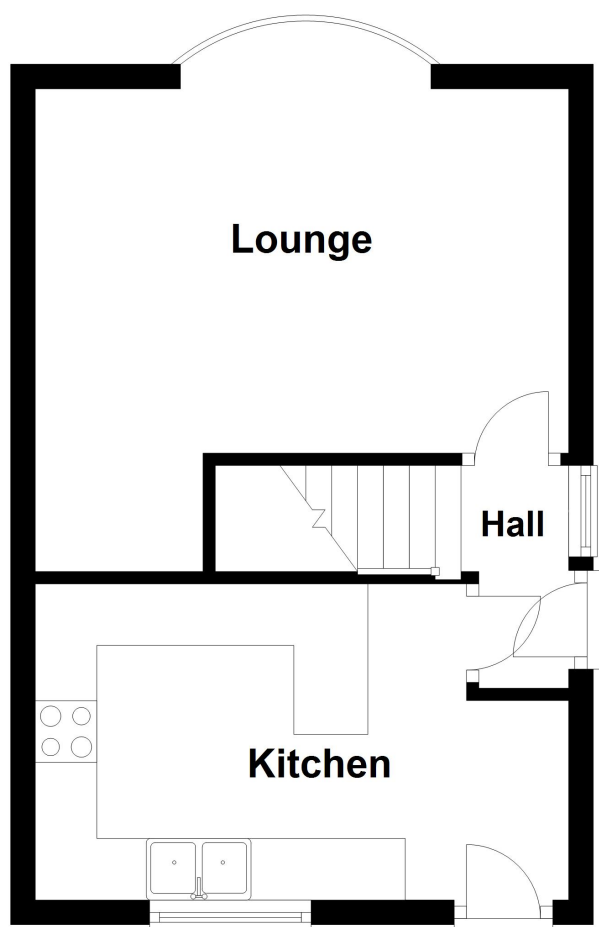
Tenure

We believe the property to be Freehold

Disclaimer

Whilst these particulars are believed to be accurate, they are set for guidance only. Fresh have not tested any fixtures, fittings or services and cannot confirm that they are in working order or fit for purpose. Any floor plan provided is intended as a general guide to the layout of the accommodation and is not drawn to scale. We cannot confirm the tenure of the property is accurate and advise all buyers to obtain verification from their solicitor or surveyor. We strongly recommend that all the information which we provide about the property is verified by yourself or your advisers



Ground Floor**First Floor**