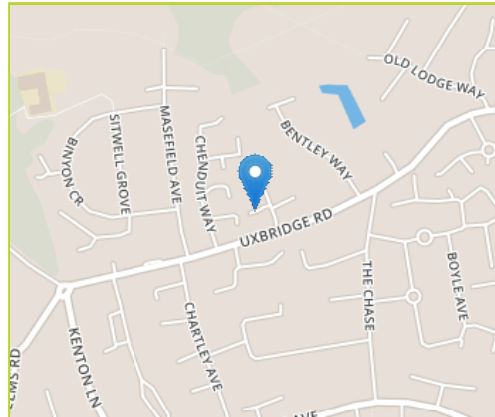


This sought after residential turning is located within a short distance from the open expanse of Bentley Priory and is close to the centre of Stanmore with its range of shops. Also close by are the principal A roads and motorways into central London.

From this property there is also access to some of the finest state and private schools in the south east of the country.



Hathaway Close, Stanmore

£995,000

Freehold

A Neo Georgian 5 Bedroom, 3 Bathroom Detached House offering ideal family accommodation located in a peaceful cul de sac off Uxbridge Road.

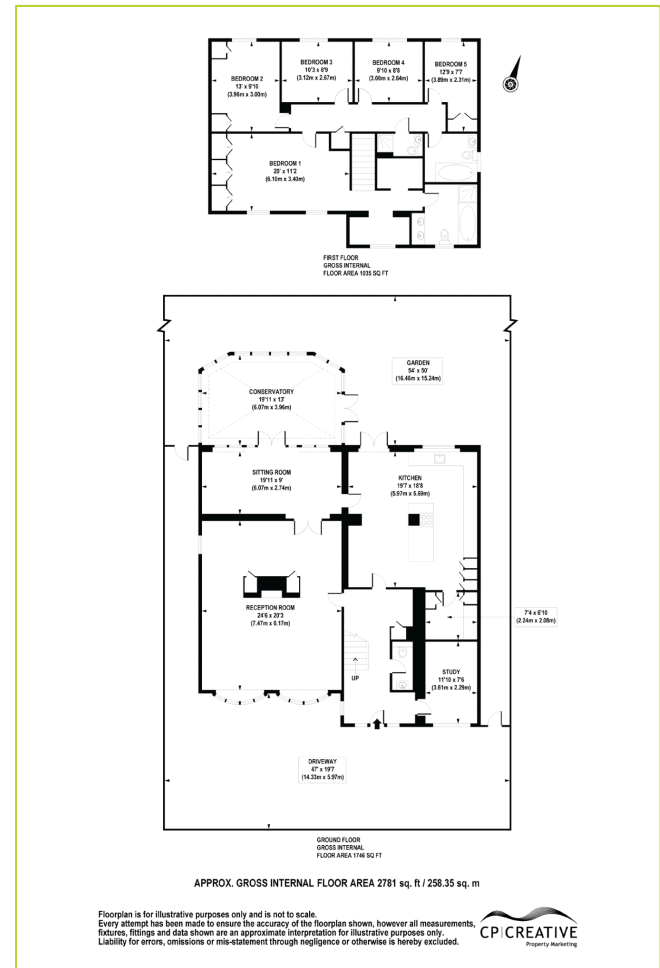
The ground floor has been modernised and comprises a large bright luxury fitted kitchen/breakfast room, with a separate utility room, a spacious lounge/dining room interconnects with a family room, plus a study and a large conservatory which overlooks the garden. On the first floor there is a spacious master bedroom suite spanning half of the first floor, comprising bedroom, en suite bathroom and separate dressing room. Four further bedrooms benefitting from a family bathroom and separate shower room.

The property is set behind a carriage drive providing parking for several cars.



- Gas Central Heating
- Guests Cloakroom
- Lounge/Dining Room
- Family Room plus Conservatory
- Study

- Large Luxury Kitchen/Breakfast Room
- 5 Good Size Bedrooms
- 3 Bathrooms
- Secluded Rear Garden
- Double Glazed



(Floor plans are not to scale and measurements are given for guidance only)

