



Lauderdale House, Gresham Road, Staines-upon-Thames. TW18 2AQ.
2 Bedroom Apartment - £290,000 Leasehold

Flat 1, 155 Lauderdale House, Gresham Road, Staines-upon-Thames, Surrey. TW18 2AQ.

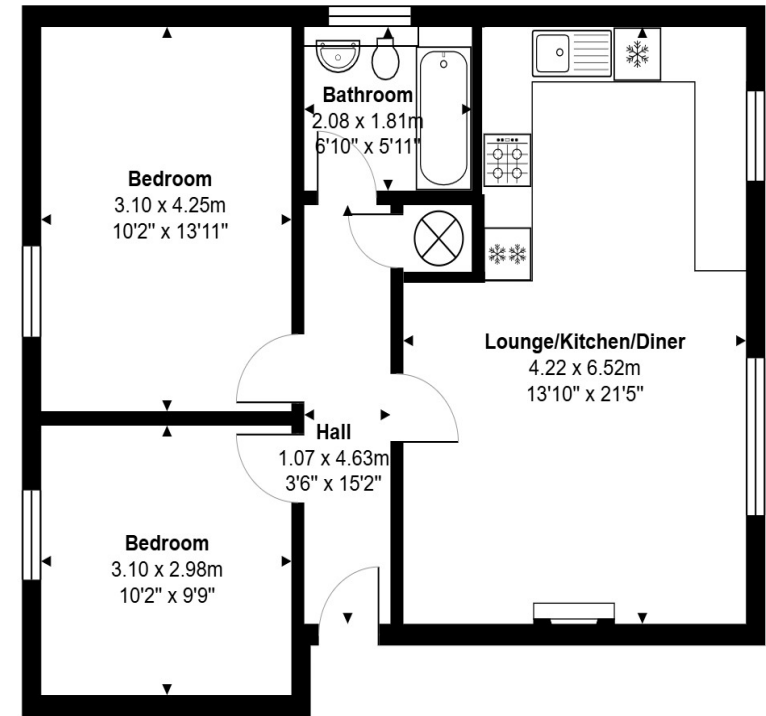
01784 451458

2 Bedroom Apartment - £290,000 Leasehold

VERY WELL PRESENTED & SPACIOUS TWO BEDROOM APARTMENT SITUATED IN THIS SOUGHT AFTER DEVELOPMENT IDEALLY LOCATED WITHIN MOMENTS OF STAINES TOWN CENTRE, MAINLINE TRAIN STATION & THE RIVER THAMES. The property is in good order throughout and benefits from a spacious lounge/diner open to modern fitted kitchen, two double bedrooms, modern white bathroom suite, garage and a long lease. No Onward Chain. Viewings Highly Recommended!

Key Features

IDEALLY LOCATED FOR STAINES TOWN CENTRE & MAINLINE TRAIN STATION
LONG LEASE
TWO DOUBLE BEDROOMS
SPACIOUS LOUNGE/DINER
GARAGE
POPULAR DEVELOPMENT



Ground Floor

Total Area: 60.1 m² ... 647 ft²

All measurements are approximate and for display purposes only.

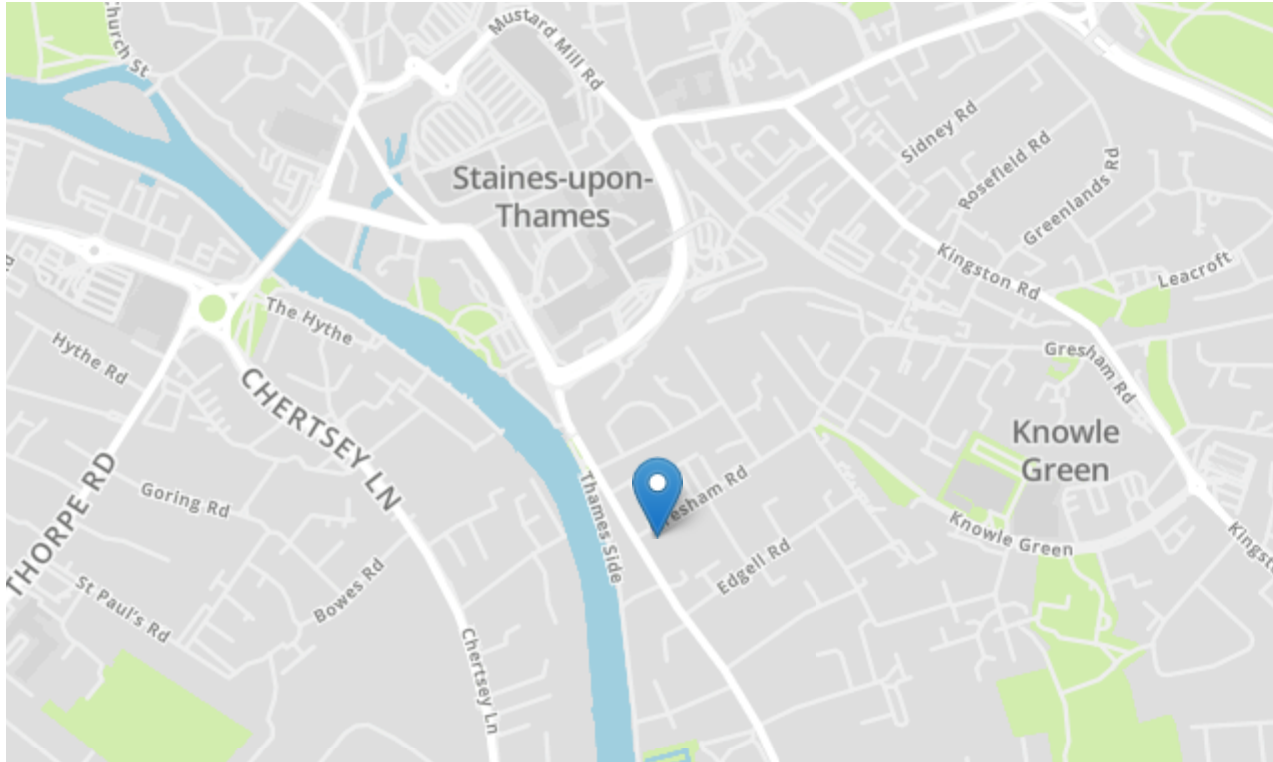






Flat 1, 155 Lauderdale House, Gresham Road, Staines-upon-Thames, Surrey. TW18 2AQ.

gregory-brown.co.uk



Tenure	Leasehold
Lease Term	135 Years Remaining
Ground Rent	To Be Confirmed
Service Charge	To Be Confirmed
Local Authority	
Council Tax	

We have prepared these property particulars as a general guide to a broad description of the property. They are not intended to constitute part of an offer or contract. We have not carried out a structural survey and the services, appliances and specific fittings have not been tested. All photographs, measurements, floorplans and distances referred to are given as a guide only and should not be relied upon for the purchase of carpets or any other fixtures or fittings. Lease details, service charges and ground rents (where applicable) and council tax are given as a guide only and should be checked and confirmed by your solicitor prior to exchange of contracts. The copyright of all details, photographs and floorplans remain exclusive to Gregory Brown.

