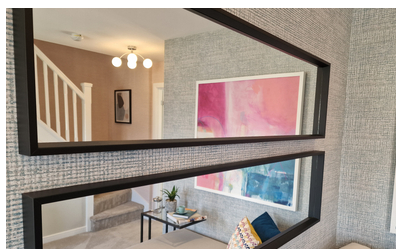
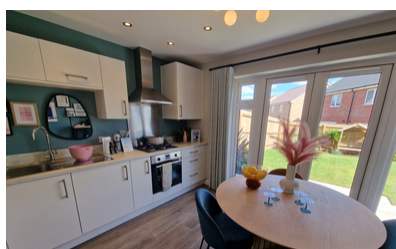
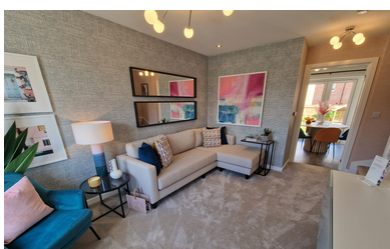




**The Lavender, Bourne Springs, Bourne PE10 0YS**

**£204,950**



\*\*\* BRAND NEW TWO BEDROOM HOMES\*\*\* Bourne Springs is a development of beautiful new homes nestled in the heart of Bourne, Lincolnshire, benefitting from the tranquil surrounding countryside while staying connected to the vibrant towns and cities nearby. Offering a mix of 2, 3, and 4-bedroom homes, this thoughtfully designed community provides the perfect blend of modern living in a traditional setting. With its convenient location just 30 minutes from Peterborough and excellent road links to the A15 AND A151, Bourne Springs offers easy access to amenities. This development is sure to appeal to a wide range of purchasers, from first-time buyers and families through to investors.



## BOURNE

Bourne Springs is a development of beautiful new homes nestled in the heart of Bourne, Lincolnshire, benefitting from the tranquil surrounding countryside while staying connected to the vibrant towns and cities nearby. Offering a mix of 2, 3, and 4-bedroom homes, this thoughtfully designed community provides the perfect blend of modern living in a traditional setting. With its convenient location just 30 minutes from Peterborough and excellent road links to the A15 AND A151, Bourne Springs offers easy access to amenities. This development is sure to appeal to a wide range of purchasers, from first-time buyers and families through to investors.

## KITCHEN/DINER

## LOUNGE

15' 11" x 10' 4" (4.85m x 3.15m)

## CLOAKROOM

## BEDROOM ONE

13' 3" x 8' 11" (4.04m x 2.72m)

## BEDROOM TWO

## BATHROOM

7' 9" x 6' 3" (2.36m x 1.91m)

## FLOOR PLAN

The floor plan is for illustrative purposes only. Fixtures and fittings do not represent the current state of the property. Not to scale and is meant as a guide only.

## AGENTS NOTE

These particulars are for reference only. Government schemes are at the discretion of the third parties and neither Rosedale nor the vendor has any influence. Specifications for individual dwellings vary and you should check final details prior to committing to a purchase. All images including maps and floor plans are for reference only and are not to scale. Images used may be of the same house type but not the specific plot.

