



£579,500 Freehold



Gipsy Road, Welling





## PROPERTY DESCRIPTION

RE/MAX Select are delighted to offer for sale this extended Stevens semi-detached house, close to schools, amenities, and transport links. This spacious property comprises 4 bedrooms, through-lounge, dining room, extended kitchen/breakfast room, upstairs family bathroom, upstairs shower room, off street parking for 2 cars, and south-west facing rear garden.

Further benefits include utility room, summerhouse, outside storage, double glazing, and gas central heating.

Total Internal Area approx: 1,519.97 sq ft (141.21 sq m). EPC Rating D61

## FEATURES

- Extended Stevens semi-detached house
- 4 bedrooms
- Through-lounge
- Dining room
- Extended kitchen / breakfast room
- Utility room
- Upstairs family bathroom
- Upstairs shower room
- Off street parking for 2 cars
- South-west facing rear garden
- Summerhouse





## ROOM DESCRIPTIONS

### Ground Floor

#### Porch

Tiled flooring, double glazed.

#### Entrance Hall

Wood flooring, ceiling coving, radiator, understairs cupboards.

#### Through Lounge

7.54m x 3.62m (24' 9" x 11' 11") Wood flooring, ceiling coving, 2 radiators, double glazed windows, double glazed patio doors.

#### Dining Room

3.16m x 3.00m (10' 4" x 9' 10") Wood flooring, 2 radiators; double glazed Velux skylights with integrated blinds; double glazed windows, double glazed french doors.

#### Kitchen / Breakfast Room

3.97m x 3.45m (13' 0" x 11' 4") Laminate tiled flooring; range of wood wall and base units with tiled splashback; integrated dishwasher, integrated washing machine; Rangemaster oven and hob; Rangemaster extractor hood, American-style fridge/freezer; sink and drainer unit; radiator, double glazed windows.

#### Utility Room

2.20m x 1.60m (7' 3" x 5' 3") Tiled flooring, wood wall units; space and connections for dryer.

#### Garage

2.40m x 2.30m (7' 10" x 7' 7") Up-and-over door, electrical power and lighting.

### First Floor

#### Landing

Carpeted, dome skylight; access to loft.

#### Bedroom

4.17m x 3.38m (13' 8" x 11' 1") Laminate flooring, ceiling coving, radiator, fitted wardrobes, double glazed windows.

#### Bedroom

3.34m x 3.28m (10' 11" x 10' 9") Carpeted, radiator, fitted wardrobes, double glazed windows.

#### Bedroom

4.12m x 2.13m (13' 6" x 7' 0") Laminate flooring, radiator, fitted wardrobe, double glazed windows.

#### Bedroom

2.27m x 1.93m (7' 5" x 6' 4") Carpeted, double glazed windows.

#### Bathroom

2.60m x 1.86m (8' 6" x 6' 1") Vinyl flooring, tiled walls; large shower cubicle with electric shower; bath with shower-mixer; w/c, wash-hand basin, heated towel-rail, extractor fan, double glazed windows.

#### Shower Room

2.78m x 1.90m (9' 1" x 6' 3") Vinyl flooring; large shower enclosure with thermostatic shower; wash-hand basin, w/c, heated towel-rail, extractor fan, double glazed windows.

### External

#### Front Driveway

Off street parking for 2 cars.

#### Rear Garden

South-west facing; decking, artificial turf, lawn, outdoor lighting, outdoor tap.

#### Summerhouse

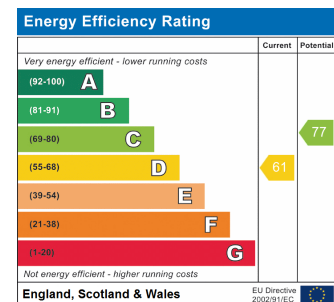
3.76m x 2.87m (12' 4" x 9' 5") Electrical power and lighting.

#### Outside Storage

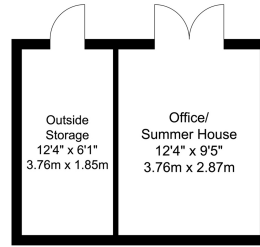
3.76m x 1.85m (12' 4" x 6' 1") Electrical power and lighting.

### Information:

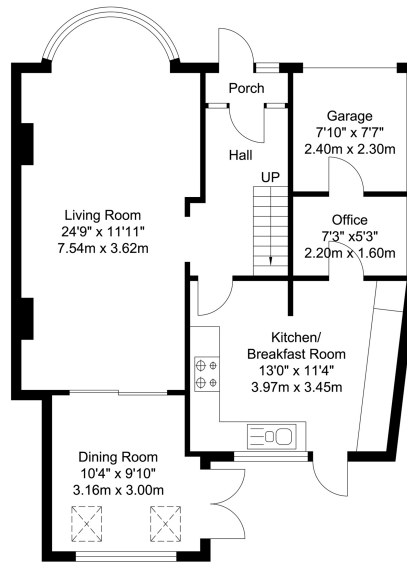
- Council Tax: Band E



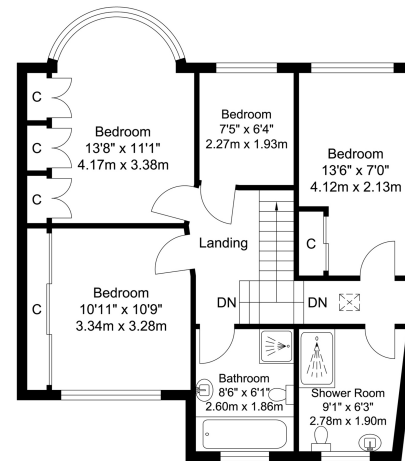
# FLOORPLAN



Outbuilding  
Approximate Floor Area  
195.04 SQ.FT.  
(18.12 SQ.M.)



Ground Floor  
Approximate Floor Area  
713.64 SQ.FT.  
(66.30 SQ.M.)



First Floor  
Approximate Floor Area  
611.28 SQ.FT.  
(56.79 SQ.M.)



TOTAL APPROX FLOOR AREA 1519.97 SQ.FT. (141.21 SQ. M.)

For Identification Purposes Only.

