



Moorlands Close

Melbourn, Royston,
Cambridgeshire, SG8 6FF
Leasehold - OIEO £170,000

country
properties

Step into a world of comfort and convenience with this stunning first-floor apartment, ideally located in the sought after village of Melbourn. Perfectly positioned near local amenities, the science park, and serene green spaces, this light-filled gem is ready for you to move in and make it your own.

The spacious, neutrally styled interiors are bathed in natural light, creating an inviting atmosphere from the moment you step inside. The sleek, fully integrated kitchen is a keen cooks dream, while the peaceful communal garden offers a perfect escape for relaxation.

With a secure entry system and a private, allocated parking space, this apartment is the ideal choice for a pied-à-terre, a first-time buyer, or a savvy investor looking for a property with strong rental potential.

Don't miss out on this fantastic opportunity—schedule your viewing today!

Tenure: Leasehold

Lease Length Remaining: 109 Years

Service Charge – £165.10 PCM

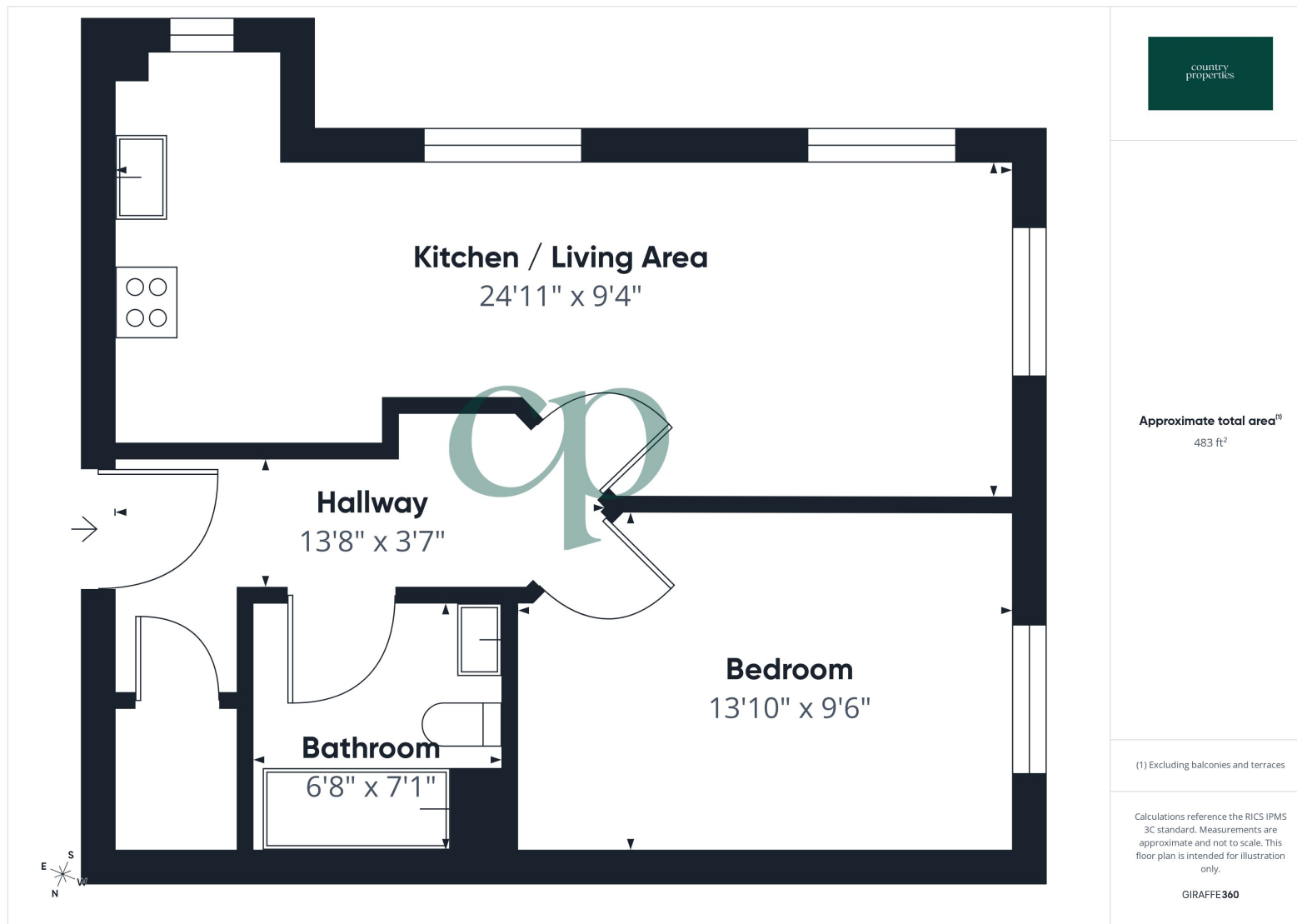
Ground Rent – £0 Per Annum

- Chain Free
- First Floor Apartment
- Turnkey property
- Long Lease
- Private allocated parking
- Heart of the village
- Bright and airy throughout.









All measurements are approximate and quoted in metric with imperial equivalents and for general guidance only and whilst every attempt has been made to ensure accuracy, they must not be relied on. The fixtures, fittings and appliances referred to have not been tested and therefore no guarantee can be given and that they are in working order. Internal photographs are reproduced for general information and it must not be inferred that any item shown is included with the property. For a free valuation, contact the numbers listed on the brochure

Viewing by appointment only

Country Properties | 45, High Street | SG8 9AW
T: 01763 245121 | E: royston@country-properties.co.uk
www.country-properties.co.uk

country
properties

country
properties