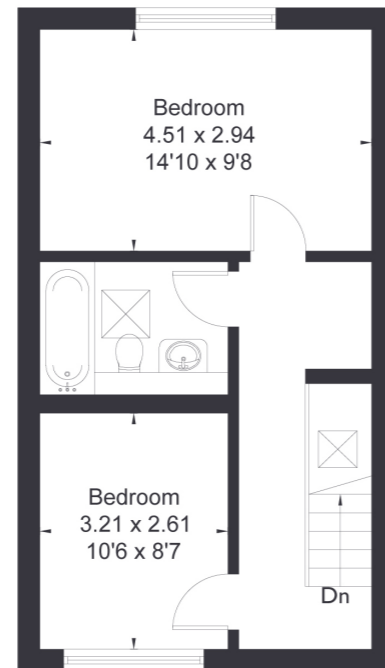
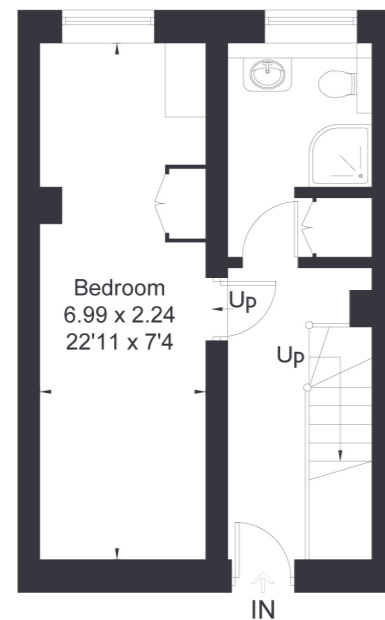


## Clocktower Mews, W7

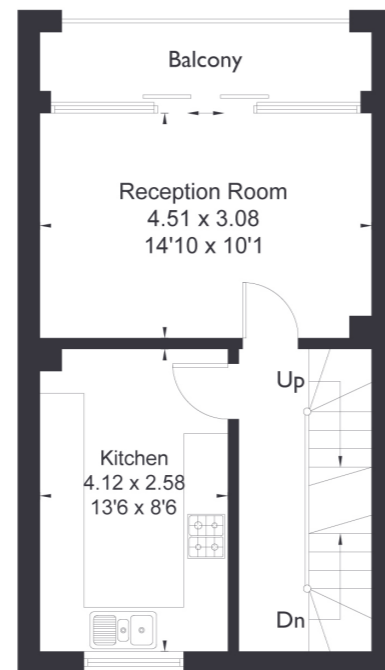
Approximate Floor Area = 102.4 sq m / 1102 sq ft



Second Floor



Ground Floor



First Floor



### 3 BEDROOM HOUSE

## Clocktower Mews, W7

£390,000

Welcome to this charming three bedroom, two bathroom mews house nestled in the prime location of Hanwell. Spread across three floors, this delightful property boasts spacious rooms throughout, ensuring comfort and functionality for its occupants. The top floor is adorned with skylights, inviting ample natural light to illuminate the living spaces.

Step outside onto your private balcony, perfect for enjoying a morning coffee or unwinding after a long day.

### FEATURES

- Three Bedrooms
- Two Bathrooms
- Separate Kitchen/Dining
- Private Balcony
- St Josephs Catholic Primary School
- Hanwell Station (Elizabeth Line)
- EPC Rating C



3 BEDROOM HOUSE

## Clocktower Mews, W7

With great potential, this home offers the ideal canvas for customisation and personalisation.

Enjoy nearby amenities and schools like Hanwell Broadway and St. John's Catholic Primary School. Commute effortlessly via Hanwell Station (Elizabeth Line), just a 5-minute walk away. Easy access to West Ealing in 15 mins, and Ealing Broadway in a further 15. Don't miss this opportunity to call this wonderful property home. EPC Rating C.

