



133 Riverbank, Laleham Road, STAINES-UPON-THAMES.

TW18 2QH

BENEFITTING FROM AN EXTENDED LEASE THIS WELL PRESENTED AND SPACIOUS TWO BEDROOM APARTMENT IS IDEALLY POSITIONED FOR STAINES TOWN CENTRE & MAINLINE TRAIN STATION. The property briefly comprises a spacious lounge/diner, separate fitted kitchen, two well-proportioned bedrooms, modern white bathroom suite and No Onward Chain. Viewings Highly Recommended!

ROOM DESCRIPTIONS

Communal Entrance

With security entry door and stairs to Second Floor.

Second Floor

Entrance Hall

Light and power points, single radiator, entry-phone system, cupboard housing hot water tank, doors to.

Lounge/Diner

Front aspect UPVC double glazed window, light and power points, TV point, double radiator.



Kitchen

Front aspect UPVC double glazed window, range of fitted units at eye and base level, sink drainer unit, space for washing machine, cooker and fridge/freezer. Cupboard housing boiler.



Bedroom 1

Rear aspect UPVC double glazed window, light and power points, single radiator.



Bedroom 2

Rear aspect UPVC double glazed window, light and power points, single radiator.



Bathroom

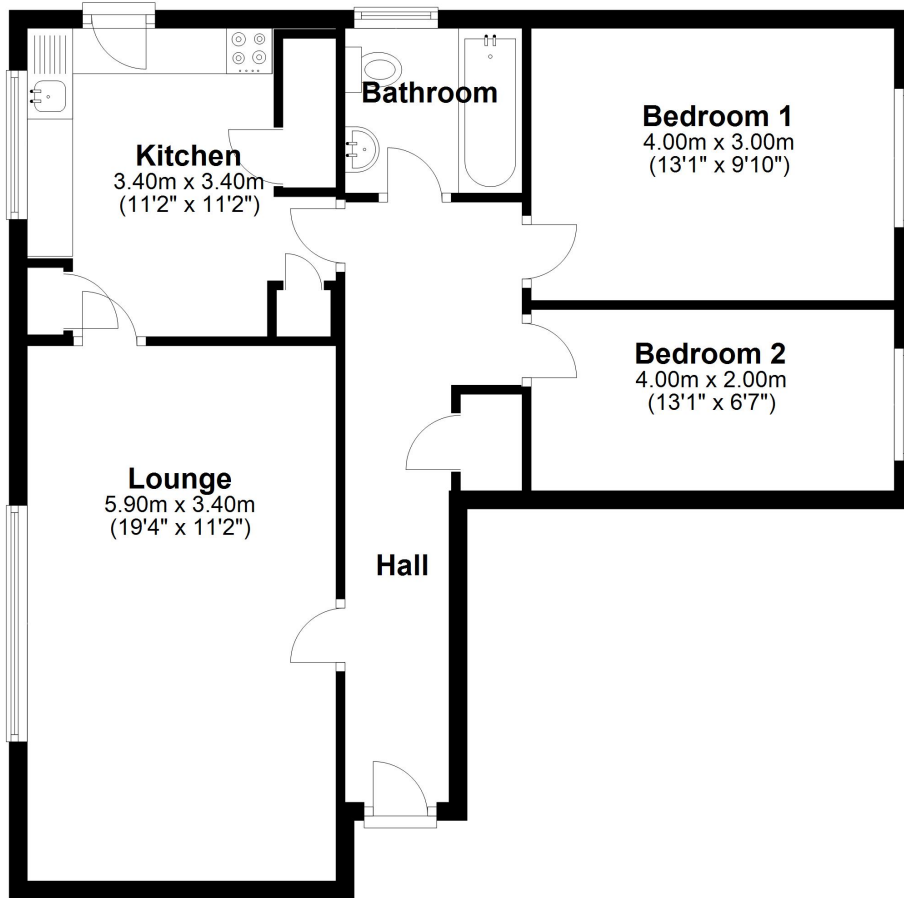
Side aspect UPVC double glazed window, panel enclosed bath, low level W.C, wash hand basin inset to cabinet, single radiator, partly tiled walls, light point.



FLOORPLAN

Second Floor

Approx. 67.6 sq. metres (727.5 sq. feet)



Total area: approx. 67.6 sq. metres (727.5 sq. feet)