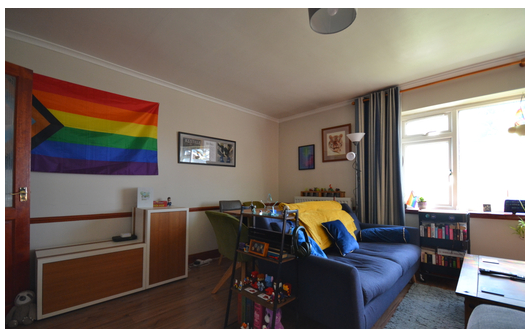
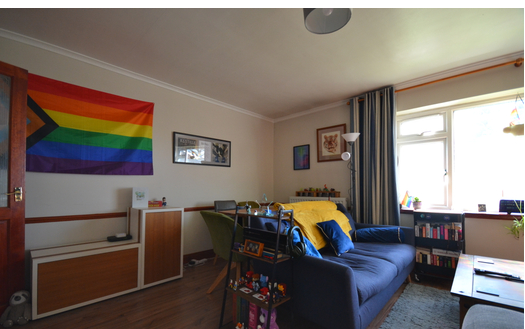




NEWSON & BUCK
ESTATE AGENTS



23 Lowfield, King's Lynn, Norfolk PE30 4RH

£110,000

Newson & Buck are proud to offer to the market this well presented two bedroom flat situated at Lowfield's. The property comprises of an entrance hallway, lounge diner, kitchen, two bedrooms and a bathroom. The property is located within close proximity of the Queen Elizabeth Hospital and is within a twenty minute walk of King's Lynn Town Centre. Viewing is highly essential for this property so please get in touch with our sales team today to book your viewing.

Laminate flooring, one radiator, cupboard space.

16' 1" x 13' 8" (4.90m x 4.17m) Laminate flooring, one double glazed window, one radiator, fitted cupboard space.

Bedroom One

12' 1" x 10' 6" (3.68m x 3.20m) Laminate flooring, one radiator, one double glazed window.

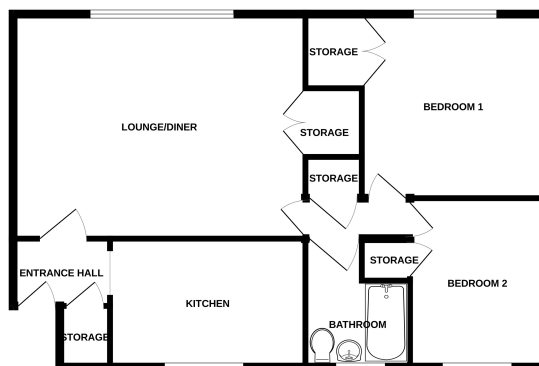
10' 10" x 8' 5" (3.30m x 2.57m) One double glazed window, one radiator.

6' 03" x 9' 0" (1.91m x 2.74m) Low flush w/c, one radiator, sink, bathtub with shower, one double glazed window.

A kitchen with white cabinetry, a black countertop, and a window. The kitchen features white upper and lower cabinets with black handles. The countertop is black and holds various items including a toaster, a kettle, and a water dispenser. A window with a white frame is positioned above the sink area. The floor is made of light-colored tiles.



GROUND FLOOR



While every attempt has been made to ensure the accuracy of the facts contained here, measurements of doors, windows, rooms and any other items are approximate and no responsibility is taken for any error, omission or mis-statement. This plan is for illustrative purposes only and should be used as such by any prospective purchaser. The services, systems and appliances shown have not been tested and no guarantee as to their operability or efficiency can be given.