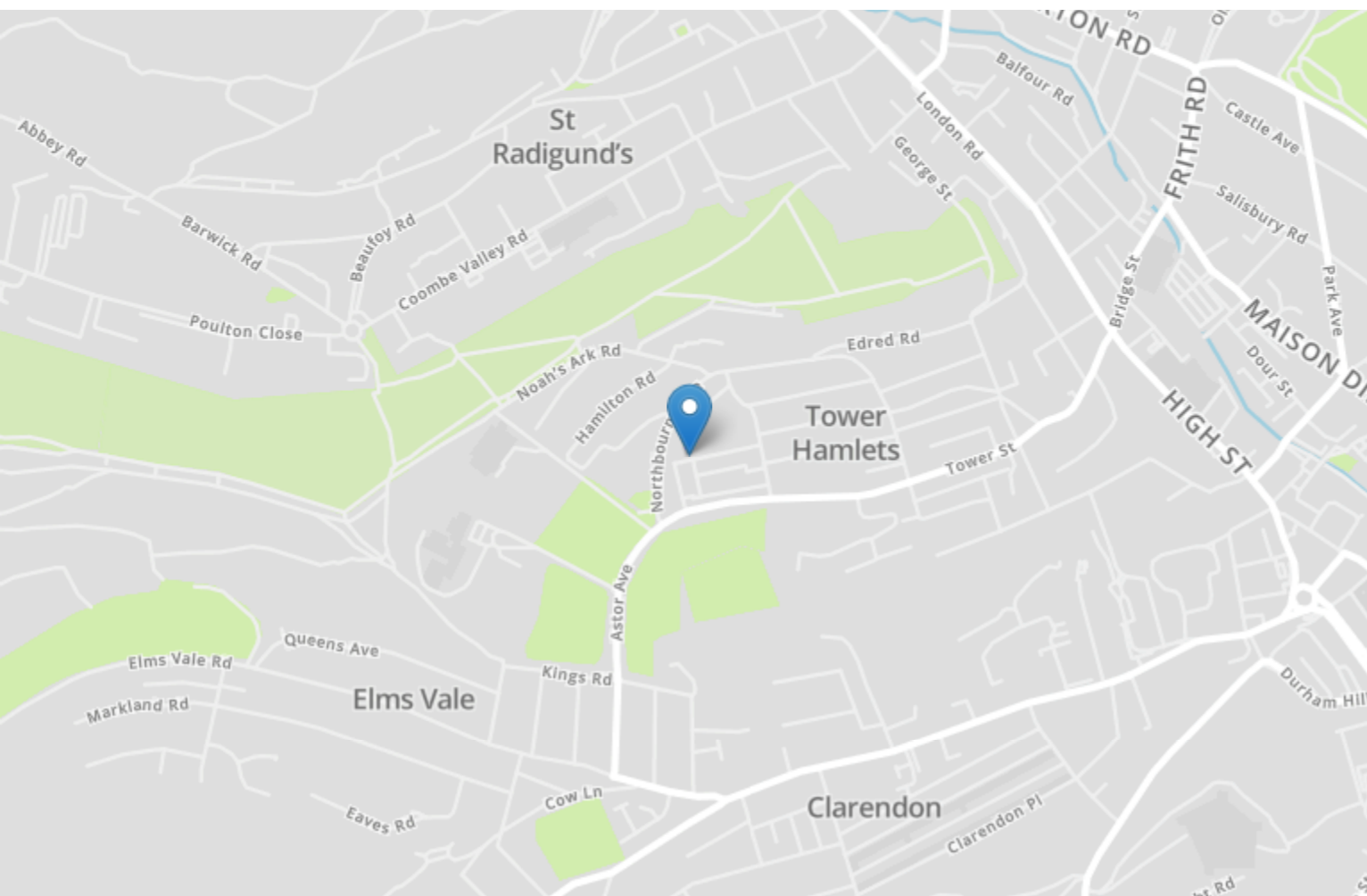


Energy Efficiency Rating		Current	Potential
Very energy efficient - lower running costs			
(92-100)	A		
(81-91)	B		88
(69-80)	C		
(55-68)	D	57	
(39-54)	E		
(21-38)	F		
(1-20)	G		
Not energy efficient - higher running costs			
England, Scotland & Wales		EU Directive 2002/91/EC	



47 Devonshire Road

Dover
CT17 0AX

£160,000 FREEHOLD

Draft Details... No Onward Chain... Two Double Bedrooms... Ideal for Someone Looking to put Their Own Stamp on a Property... Close Proximity to a Number of Schools and Shops... Burnap + Abel are delighted to offer onto the market this two bedroom terraced house situated on the popular Devonshire Road, Dover. The property is ideal for first time buyers or for buy-to-let investment. The accommodation offers a lounge, dining room, kitchen, upstairs bathroom, and two double bedrooms. Additional benefits include; gas central heating, double glazing, a good sized rear garden, and NO ONWARD CHAIN. For your chance to view call sole agents Burnap + Abel on 01304 279107.



Lounge

Lino flooring, radiator, and double glazed window.

Dining Room

Lino flooring, radiator, gas fire, under stair storage cupboard, double glazed window.

Leading to;

Kitchen

Tiled flooring, base units with space for; refrigerator, cooker, and washing machine.

Double glazed window and rear door leading to garden.

Bedroom 1

Double bedroom. Laminate flooring, radiator, double glazed window.

Bedroom 2

Double bedroom. Radiator, airing cupboard, double glazed window. Leading to;

to;

Bathroom

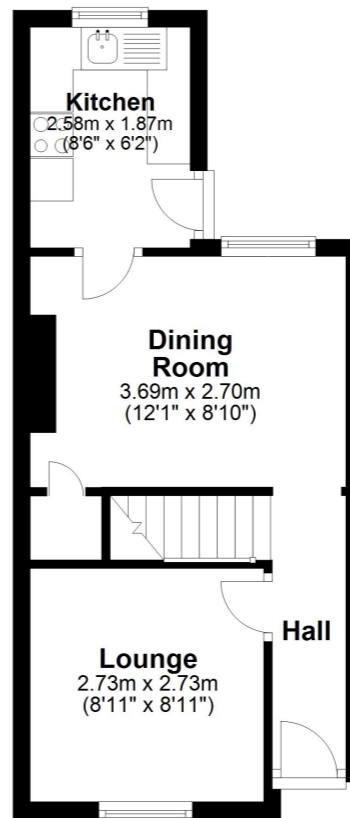
Lino flooring, bath, low level W.C., hand basin, radiator, storage cupboard, double glazed window.

Lino flooring, bath, low level W.C., hand basin, radiator, storage cupboard, double glazed window.

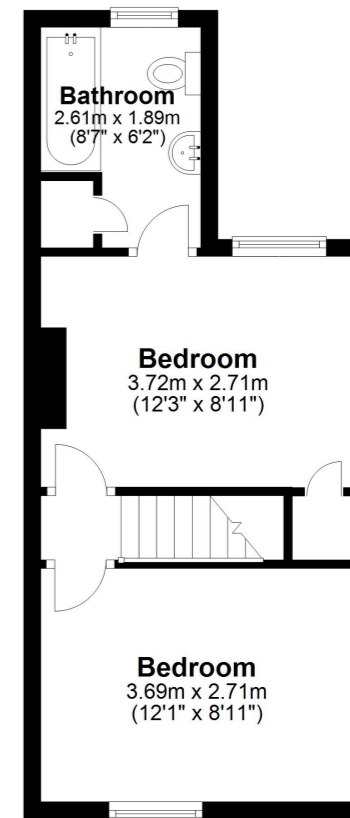
Garden

A generous outside space with a mixture or hard ground, decking, and lawn.

Ground Floor
Approx. 28.1 sq. metres (303.0 sq. feet)



First Floor
Approx. 28.6 sq. metres (307.4 sq. feet)



Total area: approx. 56.7 sq. metres (610.4 sq. feet)

Whilst every attempt has been made to ensure the accuracy of the floor plan contained here, measurements of doors, windows, rooms and any other items are approximate and no responsibility is taken for any error, omission or mis-statement. This plan is for illustrative purposes only and should be used as such by any prospective purchaser.
Plan produced using PlanUp.

