



The Old Sweet Shop

KIKRBY STEPHEN



THE OLD SWEET SHOP



Welcome to The Old Sweet Shop, where nostalgia dances with modern charm. This enchanting property which was renovated in 2017 by the current owners, was once a bustling sweet shop, and has been transformed into a unique living space that will awaken your inner child. From the moment you step through the front door and hear the bell chime, you'll be transported to a world of elegant style and cosy nooks.

You enter The Old Sweet Shop through the beautiful Kitchen Diner which has been designed to a high standard, with a modern design and styling. With space for a large dining table, the family can eat and enjoy a get together. The current owners have considered every detail from clever storage solutions to beautifully designed cabinetry in Midnight Navy. A beautiful Cookmaster oven sits proudly and begs you to create sumptuous suppers.

The property would make a delightful home for any growing family or for a second home in one of the most beautiful market towns. A holiday let investment would yield an attractive income as there are no known covenants to prevent this.





Take a closer look...



Property Type:

Terraced

Square Footage:

1151_{sqft}

Council Tax Band

B

EPC Rating

E

Tenure

Freehold

Why Kirkby Stephen?



KIRKBY STEPHEN IS RENOWNED FOR ITS FRIENDLY COMMUNITY, SCENIC BEAUTY, AND ACCESS TO OUTDOOR ACTIVITIES SUCH AS HIKING, CYCLING, AND EXPLORING THE NEARBY LAKE DISTRICT NATIONAL PARK. LOCAL SHOPS, SCHOOLS, AND HEALTHCARE FACILITIES ARE WITHIN EASY REACH, ENSURING A CONVENIENT LIFESTYLE.

A TRADITIONAL MARKET TOWN OF HISTORIC BUILDINGS, COBBLED YARDS, QUAIN CORNERS AND INTERESTING SHOPS, IDEALLY LOCATED IN THE BEAUTIFUL UPPER EDEN VALLEY, FORMERLY THE OLD COUNTY OF WESTMORLAND, NOW CUMBRIA. THIS IS AN AREA OF CUMBRIA MUCH LESS WELL KNOWN THAN THE LAKE DISTRICT, BUT EQUALLY APPEALING. IT IS SURROUNDED BY A LANDSCAPE OF PASTORAL RURAL SCENERY AND WILD UPLANDS AND OFFERS BREATHTAKING VIEWS IN EVERY DIRECTION AND HAS BEEN PART OF THE YORKSHIRE DALES NATIONAL PARK, SINCE 2016. REMOTELY LOCATED FROM LARGE TOWNS AND POPULATION CENTRES, KIRKBY STEPHEN HAS DEVELOPED A STRONG AND SELF-SUFFICIENT IDENTITY AND A VIBRANT SENSE OF COMMUNITY.

Kirkby Stephen Village





GARDEN



THE SPACE TO THE REAR OF THE PROPERTY HAS BEEN TURNED INTO A HAVEN OF TRANQUILLITY THANKS TO THE ADDITION OF POTTED PLANTS AND SCREENS.

AN IDEAL SPACE TO DRINK YOUR MORNING COFFEE OR TO ENJOY THE LAST RAYS OF SUMMER SUNSHINE WITH A GLASS OF WINE AFTER DINNER. KIRKBY STEPHEN IS KNOWN FOR ITS DARK SKIES AND A NIGHT BELOW THE STARS UNDER A BLANKET WITH A DRAM OF DAMSON GIN WOULD MAKE FOR THE MOST PERFECT EVENING. THE GARDEN HAS A STONE BUILT OUTBUILDING WHICH IS CURRENTLY AN ART STUDIO BUT COULD BE CONVERTED INTO A HOME OFFICE SPACE OR SIMPLY USED FOR STORAGE.

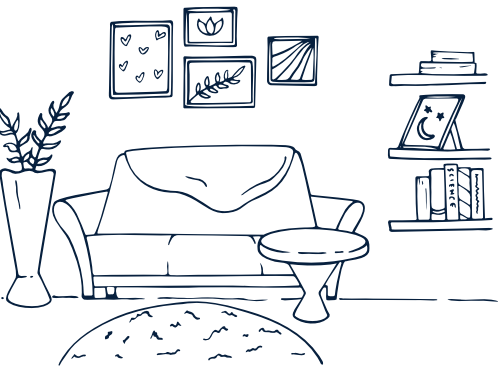


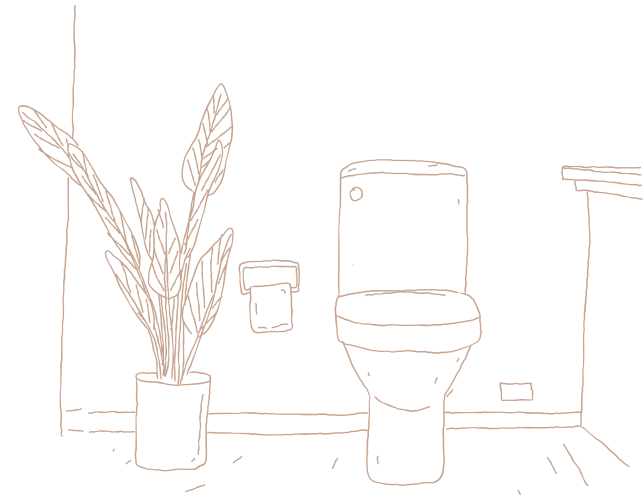
THE OLD SWEET
SHOP
KIRKBY STEPHEN



Zzz... 000







WHERE CAN I FIND...



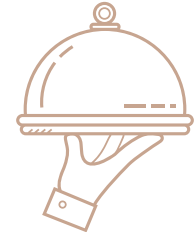
The Closest School?

Kirkby Stephen Primary School is located just 0.4 miles away.



The Local Shop?

Eden Valley Produce is 0.1 miles from your doorstep. Great for those essentials!



A Delicious Meal?

The Pennine Inn and it's lovely menu awaits you, only 0.1 miles away.



Somewhere Nice to Walk the Dog?

The Podgill Viaduct makes a great walk and is just a short 4 minute drive from your home 1.1 miles away.



A Refreshing Pint?

The Taggy Man is just 253 ft round the corner, you could be back home in just 5 minutes!

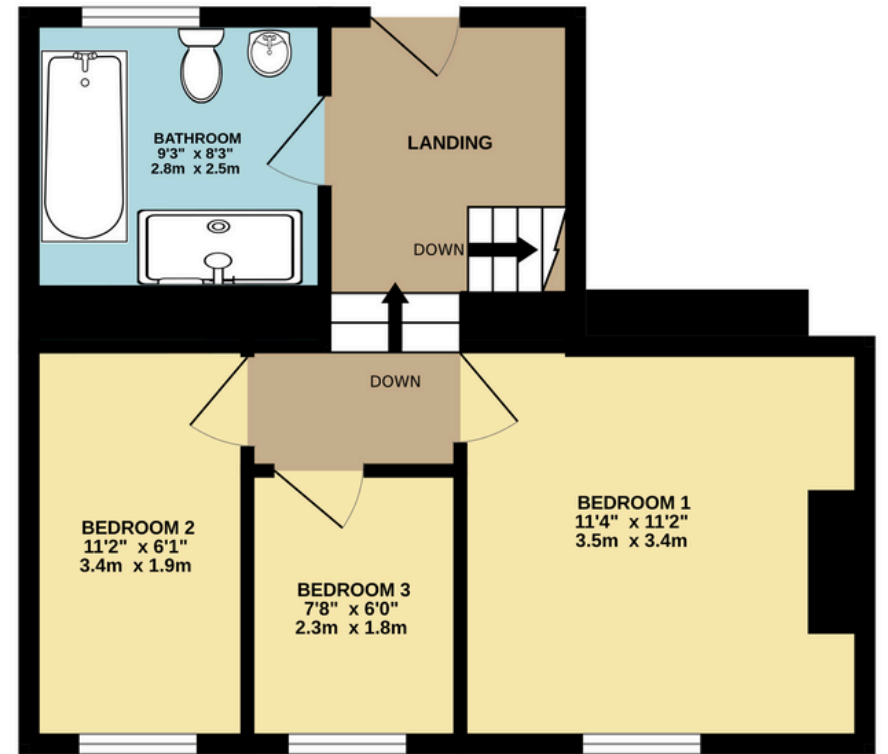


Your Local Property Experts?

Our lovely Eden Valley Representative Katrina is Available via Email or phone 7 Days!







Total Floor Area: 1151 sq.ft (106.93 sq.m) approx.

Whilst every attempt has been made to ensure the accuracy of this floorplan, measurements of doors, windows, rooms and any other items are approximate and no responsibility is taken for any error, omission or mis-statement. This plan is for illustrative purposes only and should be used as such by any prospective purchaser. The services, systems and appliances shown have not been tested and no guarantee as to their operability or efficiency can be given.





The Old Sweet Shop, 25 North Road, Kirkby Stephen ,CA17 4RH

 [///asteroid.survivor.existence](https://asteroid.survivor.existence)



01768 349000 | Katrina@lunevalleyestates.com | www.lunevalleyestates.com