



7 Newtown, Henlow, Bedfordshire, SG16 6AJ

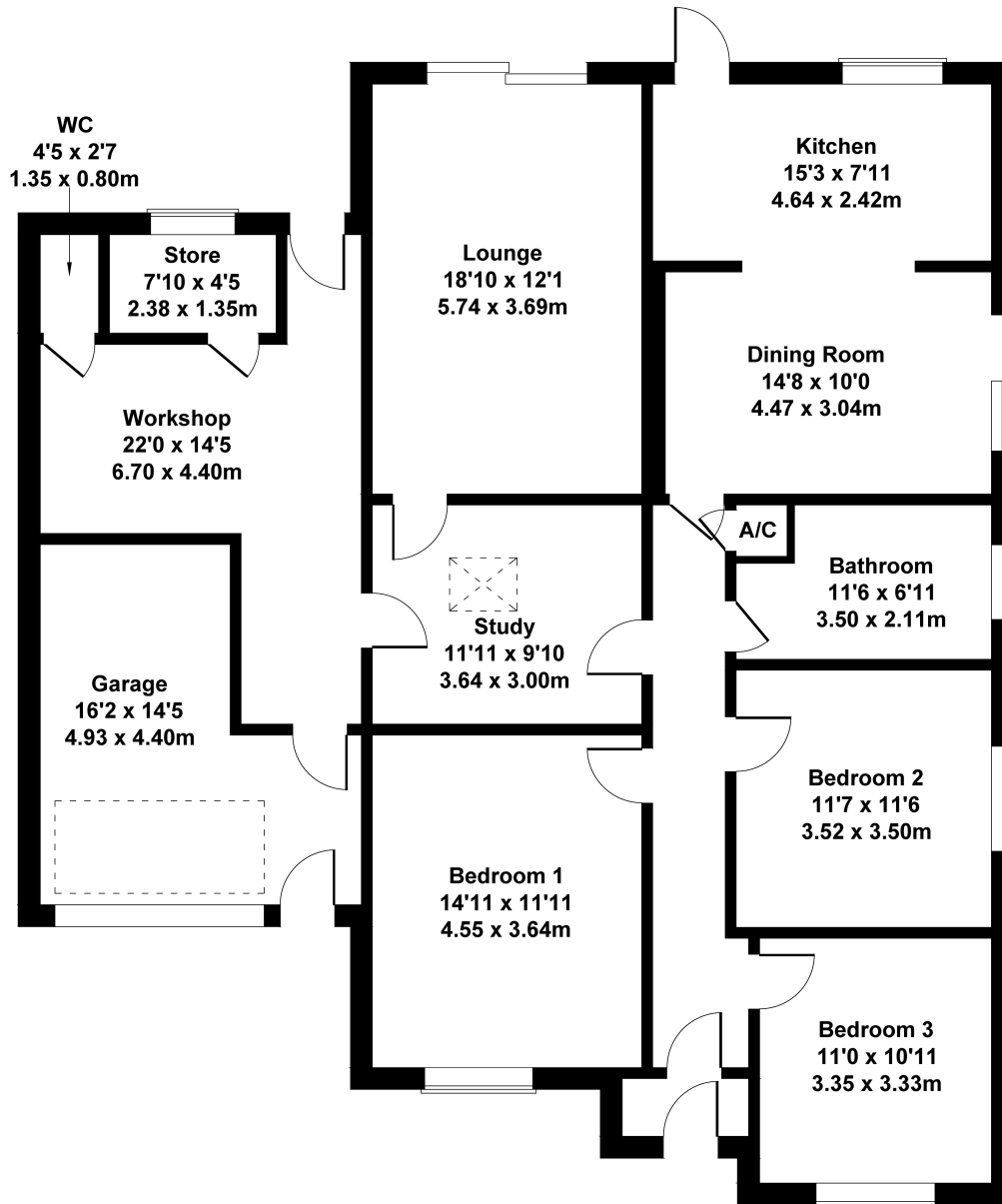
£475,000

Rarely available extended detached bungalow in this popular village close to local shops, amenities, and bus routes. Extensive accommodation to include two good sized reception rooms plus a study and three double bedrooms. Although in need of updating this property offers great potential to improve and develop to provide extensive and sizeable accommodation. Ample off road parking plus large adjoining garage/workshop + store. Situated on a good sized plot with a south facing garden. NO CHAIN



# 7 Newtown

Approximate Gross Internal Area  
1755 sq ft - 163 sq m



- DETACHED EXTENDED BUNGALOW
- NO CHAIN
- IN NEED OF SOME UPDATING & MODERNISATION
- LOUNGE + DINING ROOM + STUDY
- THREE BEDROOMS
- GARAGE + WORKSHOP + STORE
- AMPLE OFF ROAD PARKING
- SOUTH FACING GARDEN
- GREAT POTENTIAL TO IMPROVE/DEVELOP



Not to Scale. Produced by The Plan Portal 2023  
For Illustrative Purposes Only.