



DERBYSHIRE



Medbank Court, Wilford, Nottingham NG11 7FY
£125,000 - Leasehold



PROPERTY DESCRIPTION

A well-presented two-bedroom first-floor maisonette, situated in a popular residential area and offered to the market with no upward chain.

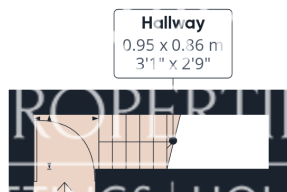
This spacious property benefits from gas central heating, double glazing, and a garage located in a nearby block. The accommodation comprises a private entrance hall, a bright and airy lounge, a fitted kitchen, two generously sized bedrooms, and a bathroom.

Externally, there is a private detached garden and access to a garage providing additional storage or parking. Ideal for first-time buyers, investors, or those looking to downsize, this low-maintenance home is ready to move into.

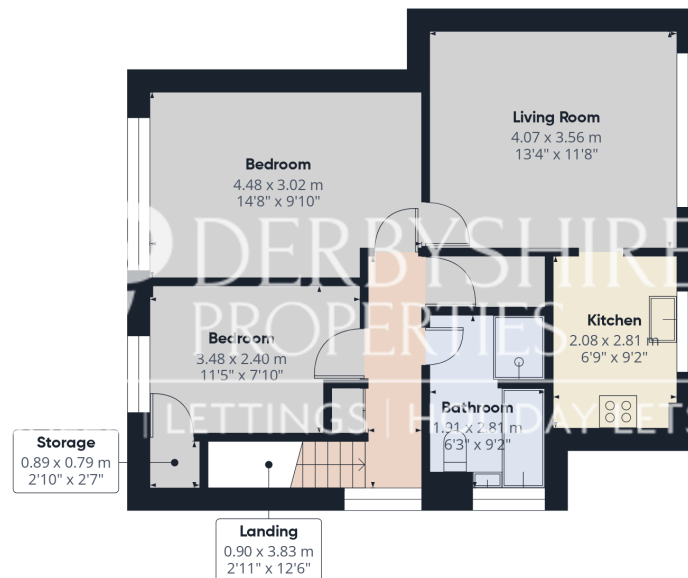
Located in this sought-after suburb of Nottingham, offering a pleasant mix of suburban living with excellent access to the city centre. The area is well-served by local amenities including shops, cafes, and schools, and benefits from superb transport links such as the Nottingham Express Tram, which provides direct access to the city and surrounding areas. Wilford also enjoys close proximity to the scenic River Trent and popular green spaces like Ruddington Lane Park and the nearby Holme Pierrepont Country Park, making it ideal for outdoor enthusiasts.

POINTS OF INTEREST

- Two Bedrooms
- Bathroom with Bath and Separate Shower Enclosure
- Private Garden
- Garage & Parking
- First Floor Maisonette
- No Upward Chain
- Double Glazing and Gas Central Heating
- Sought After location
- Council Tax Band A



Ground Floor Building 1



Floor 1 Building 1

Approximate total area⁽¹⁾

70.2 m²

755 ft²



Ground Floor Building 2

(1) Excluding balconies and terraces

Calculations reference the RICS IPMS 3C standard. Measurements are approximate and not to scale. This floor plan is intended for illustration only.

GIRAFFE360