



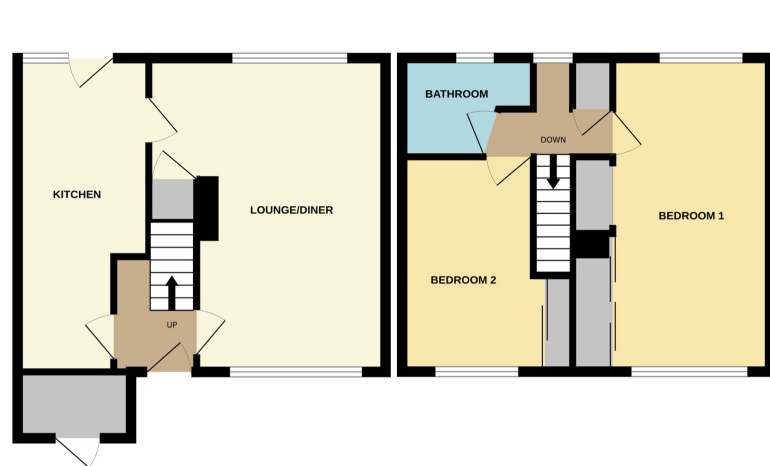
Rosedale
PROPERTY AGENTS

'Making your move easier'



79 Parker Road, WITTERING PE8 6AR

£175,000



***** A1 ACCESS ***** Situated in the sought after village of Wittering, conveniently located between Stamford and Peterborough, this home offers spacious and versatile accommodation. The property briefly comprises an entrance hall, a generous dual aspect lounge/diner, and a fitted kitchen. Upstairs features two double bedrooms, both with built-in wardrobes, and a refitted bathroom. Externally, the property benefits from established front and rear gardens, along with an allocated parking space for added convenience. EPC Energy Rating C / Council Tax Band A.

rosedaleproperties.co.uk

T: 01778 382300

ENTRANCE DOOR TO:

ENTRANCE HALL

Radiator. Stairs to first floor accommodation.

LOUNGE / DINING ROOM

Double glazed windows to the front and rear, two radiators and under stair cupboard.

Door to:

KITCHEN

5.38m x 2.25m max 1.65 m min (17' 8" x 7' 5" max 5' 5" min) (approx) Fitted with eye level and base units with worktop over. Stainless steel sink and 1/2 bowl with inset drainer with tiled splashback. Space for oven and hob. Space and plumbing for washing machine and dishwasher. Space for fridge / freezer. Double glazed window and door to the rear.

LANDING

Double glazed window to the rear, storage cupboard and loft access.

BEDROOM ONE

Dual aspect double glazed windows to the front and rear, two radiators, fitted wardrobes with sliding doors.

BEDROOM TWO

Double glazed window to the front, radiator and fitted wardrobes with sliding doors.

BATHROOM

Fitted with a three piece suite comprising bath with shower over, wash hand basin and WC. Partly tiled and double glazed window to the rear.

OUTSIDE

To the front, a path leads to the front door and storage cupboard. A gravelled area with mature shrubs and trees.

To the rear, the established garden is mainly laid to lawn and enclosed by timber fencing. Patio area, mature shrubs and planting.

ALLOCATED PARKING SPACE

AGENT NOTE:

The floor plan is for illustrative purposes only. Fixtures and fittings do not represent the current state of the property. Not to scale and is meant as a guide only.

