



- Over 55's Top Floor Apartment
- City Centre Location & Close To An Array Of Useful Shops, Amenities & Transport Links
- No Onward Chain
- Secure Living
- Wealth Of Communal Amenities
- Spacious Living Room
- Fitted Kitchen With Space For Appliances
- Large Bedroom With Inset Mirror Front Wardrobes
- Bathroom

Flat 210 Maldon Court, Maldon Road, Colchester, Essex. CO3 3AH.

Over 55's Retirement Apartment – Maldon Court, Central Colchester A spacious and well-presented one-bedroom top floor apartment, ideally located in the heart of Colchester for the over 55's community. Offering secure and comfortable living, this property benefits from lift access and the option for assisted living if required. The apartment features a welcoming entrance hall, secure telephone entry system, large living room with box bay window, fitted kitchen with space for appliances, generous double bedroom with built-in mirrored wardrobes, and a bathroom. Neutrally decorated throughout and ready to move into with no onward chain.



Property Details.

Top Floor Apartment

Entrance Hall

Living Room



10' 8" x 17' 9" (3.25m x 5.41m)

Kitchen



6' 0" x 9' 3" (1.83m x 2.82m)

Bathroom



5' 11" x 5' 5" (1.80m x 1.65m)

Property Details.

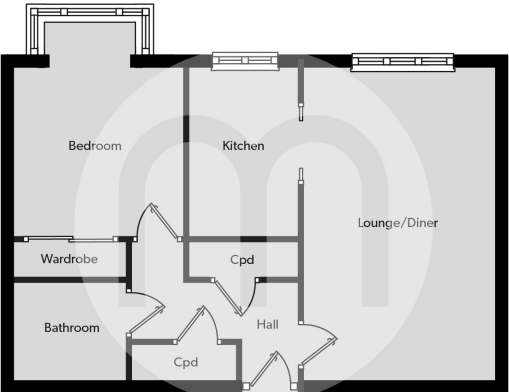
Bedroom



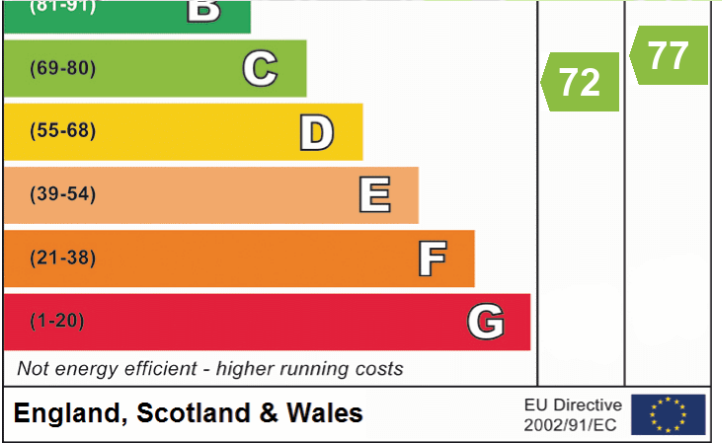
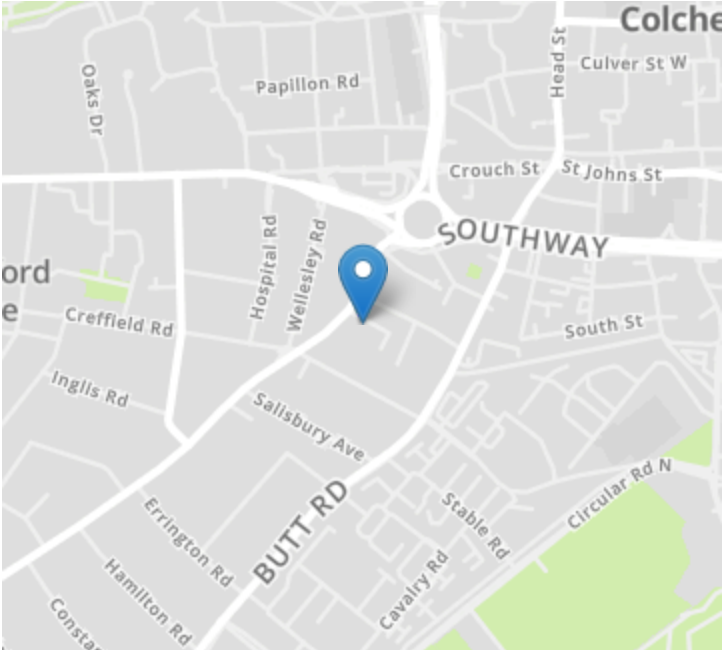
9' 8" x 12' 4" (2.95m x 3.76m)

Property Details.

Floorplans



Location



We have not carried out a structural survey and the services, appliances and specific fittings have not been tested. All photographs, measurements, floor plans and distances referred to are given as a guide only and should not be relied upon for the purchase of carpets or any other fixtures or fittings. Gardens, roof terraces, balconies and communal gardens as well as tenure and lease details cannot have their accuracy guaranteed for intending purchasers. Lease details, service ground rent (where applicable) are given as a guide only and should be checked and confirmed by your solicitor prior to exchange of contracts.