

# Fore Street

Castle Cary, BA7 7BG

COOPER  
AND  
TANNER



**£425,000 Freehold**

A private and characterful three bedroom terraced house in the middle of town with rear garden and walking distance of amenities

Fore Street  
Castle Cary  
BA7 7BG

 3  2  2 EPC D

## £425,000 Freehold

### DESCRIPTION

Welcome to this three bedroom terraced house located in the middle of Castle Cary's high street. This property is central to all local amenities and features a lovely tiered and private rear garden, offering a peaceful getaway from the town centre. The house retains many period features throughout, such as exposed beams while also presenting a modern finish for easier maintenance for a prospective new owner. The combination of old and new creates a comfortable and practical living space.

The ground floor comprises a well-appointed kitchen with integral appliances, a study, bedroom and secondary bathroom. There is also direct access to the rear garden from the ground floor. This layout offers flexibility for working from home or accommodating guests. Upstairs, you will find two additional bedrooms and a living room with views of and access to the rear garden, providing a pleasant outlook and plenty of natural light throughout.

On the first floor, the two bedrooms are both proportioned for double beds and provide enough space for additional furniture. Also, one of the bedrooms has fitted wardrobes to help facilitate more space.

Additionally, there is a large storage space at the rear of the house, complete with its own electricity supply, offering extra convenience and utility for gardening equipment or other belongings such as a tumble dryer.

This characterful home is ideal for those seeking the charm of period features with the ease of modern living, all in a prime location close to the amenities of Castle Cary.

### TENURE

Freehold

### COUNCIL TAX BAND

D





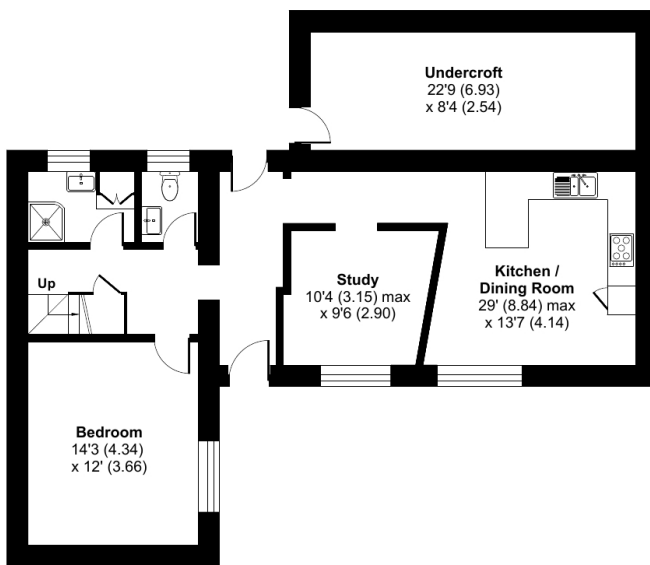
## Courtyard House, Fore Street, Castle Cary, BA7

Approximate Area = 1422 sq ft / 132.1 sq m

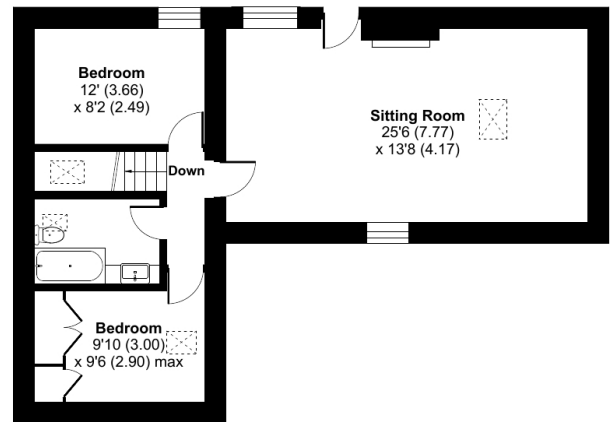
Undercroft = 191 sq ft / 17.7 sq m

Total = 1613 sq ft / 149.8 sq m

For identification only - Not to scale



GROUND FLOOR



FIRST FLOOR



Floor plan produced in accordance with RICS Property Measurement Standards incorporating International Property Measurement Standards (IPMS2 Residential). © ncthecom 2024. Produced for Cooper and Tanner. REF: 1168897

### CASTLE CARY OFFICE

Telephone 01963 350327

Fore Street, Castle Cary, Somerset BA7 7BG

[castlecary@cooperandtanner.co.uk](mailto:castlecary@cooperandtanner.co.uk)

**COOPER  
AND  
TANNER**

Important Notice: These particulars are set out as a general outline only for the guidance of intended purchasers and do not constitute, nor constitute part of, an offer or contract. All descriptions, dimensions, reference to condition and necessary permissions for use and occupation, warranties and other details are given without responsibility and any intending purchasers should not rely on the m as statements or representations of fact but must satisfy themselves by inspection or otherwise as to the correctness of each of them.

