



Whitehill Road

Whitehill Road | Hitchin | Hertfordshire | SG4 9HP

www.stonegate-estates.co.uk



WHITEHILL ROAD

Property Description

We are delighted to bring to market this well presented and much improved two/three bedroom end of terrace family home situated within the ever popular SG4 9.. postcode area of Hitchin.

The property has been extended to the rear to provide a beautiful open plan kitchen/living room with direct access onto the enclosed rear garden. Upstairs there are two bedrooms to the first floor with study/landing area between. A further staircase leads to a loft room which has a multitude of uses whether your needs are for sleeping or work.

To the rear a single brick built garage provides parking and storage and the whole property is presented in excellent order throughout.

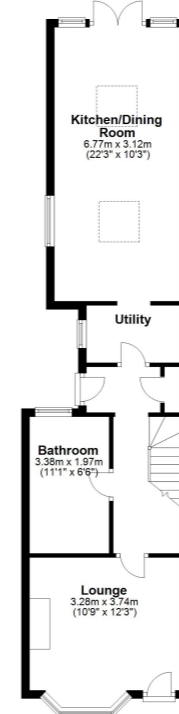
Easy walking distance to the town centre and the mainline train station.



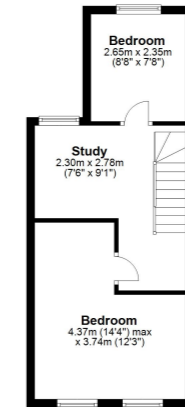
£550,000 Freehold



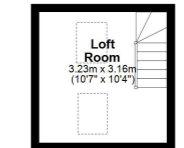
Ground Floor
Approx. 53.3 sq. metres (573.9 sq. feet)



First Floor
Approx. 31.7 sq. metres (341.5 sq. feet)



Second Floor
Approx. 10.2 sq. metres (109.6 sq. feet)



Total area: approx. 95.2 sq. metres (1025.0 sq. feet)

All measurements shown are approximate and for guidance only. Garages and workshops are not included in any gross floor areas unless integral to the main building where they will be included.
Plan produced using PlanIt.



- SG4 9.. Postcode
- Original Character Features
- Loft Room/Office Space
- Garage
- Open Plan Kitchen/Living Room
- Utility Area
- Walking Distance to Station and Town
- Beautiful Finish Throughout

EPC Rating: D

Stonegate Estate Agents

01462 438979

sales@stonegate-estates.co.uk | www.stonegate-estates.co.uk

