

FOR
SALE



Chessington Road, Ewell KT19 9XG

£925,000 - Freehold



252, Chessington Road, Ewell, Epsom, KT19 9XF [0208 394 2555](tel:02083942555) sales@jacksonnoon.com

PROPERTY SUMMARY

*** THREE BEDROOM ANNEX *** JACKSON NOON ESTATE AGENTS are pleased to offer this RARELY AVAILABLE THREE DOUBLE BEDROOM DETACHED BUNGALOW with additional THREE BEDROOM ANNEX, family room (20'4 x 17'11), BESPOKE KITCHEN, family bathroom and en-suite shower room, double glazing, gas central heating, OWN DRIVEWAY WITH PARKING FOR SEVERAL VEHICLES via ELECTRIC ENTRANCE GATES, rear garden with additional shower room....CALL NOW TO VIEW.....VENDOR SUITED.

POINTS OF INTEREST

- *Three Bedroom Detached Bungalow*
- *3 Bedroom Annex*
- *Bespoke Kitchen*
- *Bathroom & Shower Room*
- *Double Glazing & Central Heating*
- *Rear Garden With Additional Shower Room*
- *Parking For Several Vehicles*



ROOM DESCRIPTIONS

Front Door to

Entrance Hall

Karndean floor, electric cupboard

Family Room

20' 4" x 17' 11" (6.20m x 5.46m) Feature fireplace, radiator, triple aspect double glazed sash windows

Bespoke Kitchen

10' 6" x 8' (3.20m x 2.44m) Single drainer 1½ bowl sink unit inset in granite work surface, range of cupboards and units, breakfast bar, wall mounted boiler, integrated fridge and freezer, integrated dishwasher, space for cooker, Karndean floor, double glazed sash window

Lobby

Access to loft, airing cupboard

Bedroom 1

13' 10" x 9' 9" (4.22m x 2.97m) Radiator, double glazed window

En-Suite Shower Room

Comprising shower cubicle, low level wc, wash hand basin, heated towel rail, tiled walls, double glazed window

Bedroom 2

14' 7" x 9' 11" (4.44m x 3.02m) Radiator, double glazed window

Bedroom 3

11' 11" x 9' 11" (3.63m x 3.02m) Radiator, double glazed window

Bathroom

Comprising roll top bath with mixer taps and shower attachment, shower cubicle with fitted shower, shower screen, low level wc, wash hand basin, heated towel rail, tiled walls and floor, double glazed window

Outside

Large Front Garden

Water feature, off street parking for several vehicles, electric gates to front

Rear Garden

Mainly artificial grass, patio area, storage shed

Outside Shower Room

Comprising shower cubicle, shower unit, low level wc, wash hand basin, tiled walls and floor

Self Contained Annex

Entrance Hall

Open Plan Lounge/Kitchen

19' 2" x 14' 10" (5.84m x 4.52m) Butler sink inset in roll top work surface, range of cupboards and units, breakfast bar, integrated fridge and freezer, integrated dishwasher, space for cooker, Karndean floor, double glazed sash window, double glazed windows, double glazed doors to garden

Bedroom 1

15' 11" x 9' 2" (4.85m x 2.79m) Double glazed doors to garden

Bedroom 2

9' 4" x 8' 1" (2.84m x 2.46m) Skylight

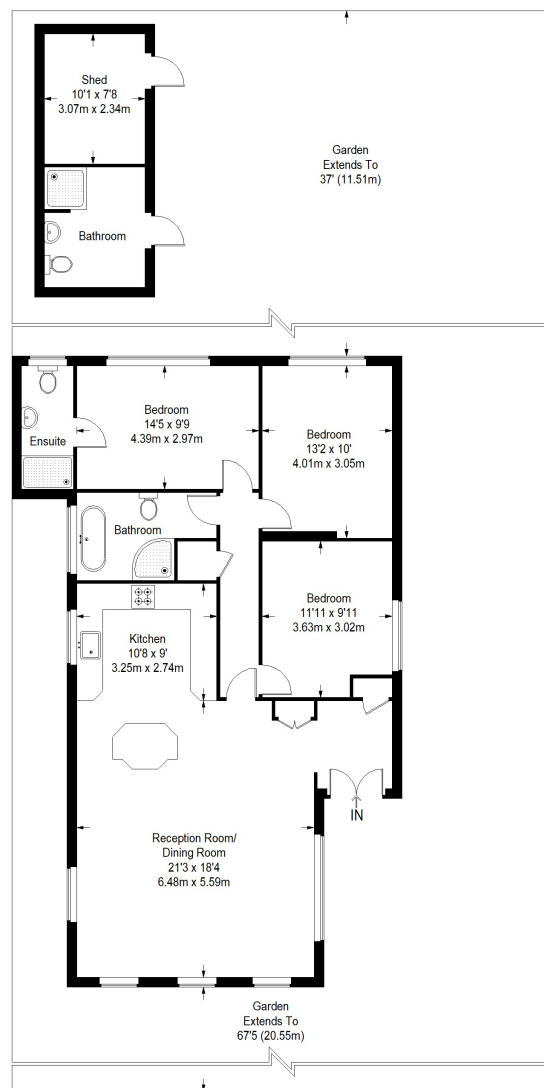
Bedroom 3

9' 0" x 7' 3" (2.74m x 2.21m) Skylight

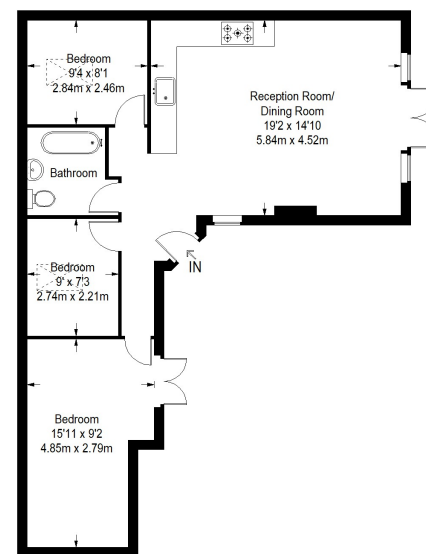
Bathroom

Comprising roll top bath with mixer tap and shower attachment, low level wc, wash hand basin, tiled walls, skylight

Chessington Road



Ground Floor = 1095 sq ft



Annex = 678 sq ft

Approximate Gross Internal Area
 GROUND FLOOR = 1095 sq ft / 101.73 sq m
 ANNEX = 678 sq ft / 62.99 sq m
 SHED = 154 sq ft / 14.31 sq m
 Total = 1927 sq ft / 179.02 sq m

This plan is for layout guidance only. Not drawn to scale unless stated. Windows and door openings are approximate. Whilst every care is taken in the preparation of this plan, please check all dimensions, shapes and compass bearings before making any decisions reliant upon them. (ID357409)