

Harper Studios, 20 Love Lane, London, SE18 6GW

£1,850 PCM

Located within the sought after new Woolwich development a spacious three double bedroom apartment. The property comprises open plan kitchen/reception, three double bedrooms, master en-suite, further bathroom, ample storage and balcony which can be accessed from all three bedrooms and reception. The property further boasts 24 hour concierge, communal garden featuring fantastic views and excellent transport links. Offer furnished

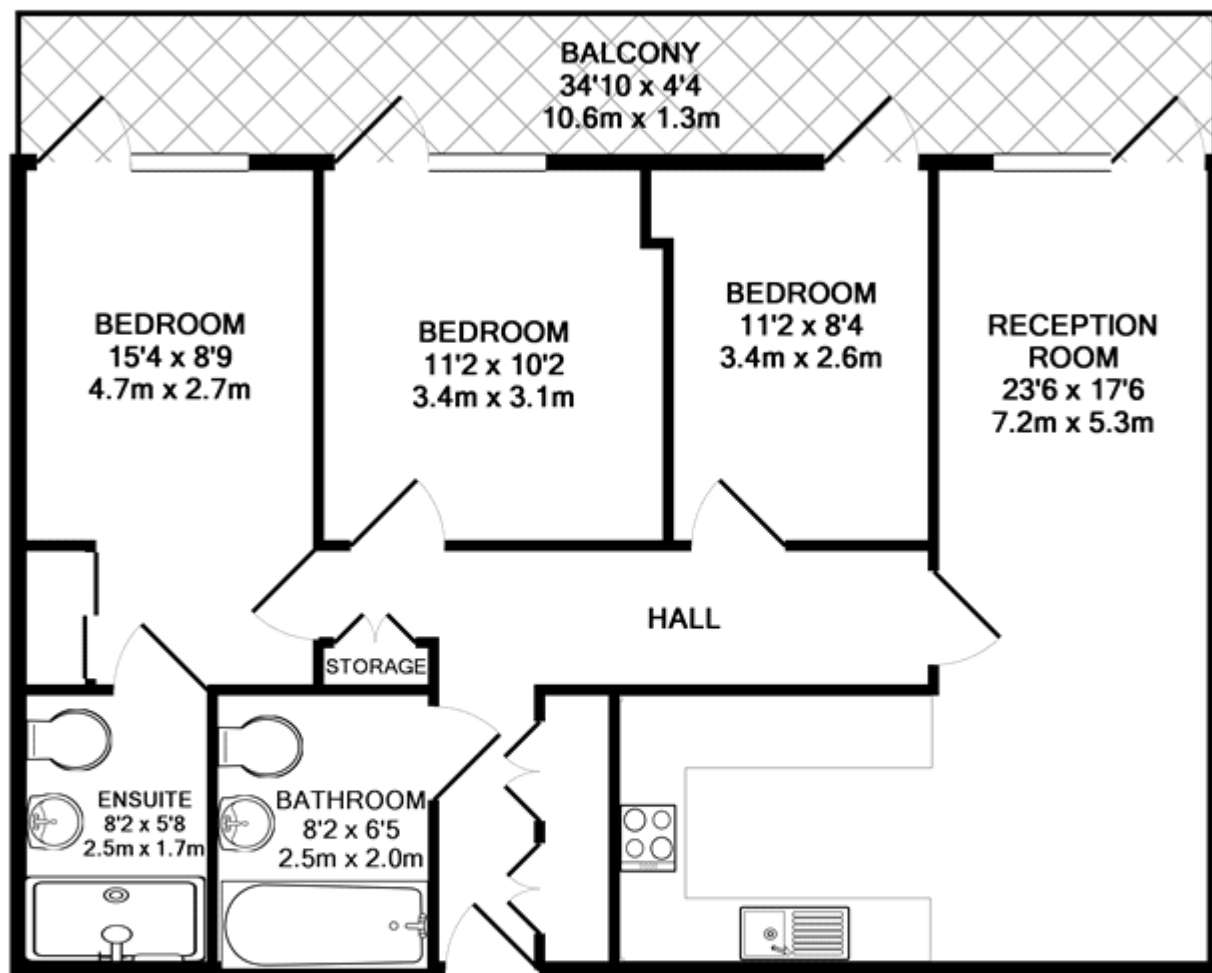
Viewing by appointment with 1st avenue.

Call: 020 8293 8600

1st avenue, 128 Metcalfe Court, West Parkside, London SE10 0EL
email: info@1stavenue.co.uk

Harper Studios, 20 Love Lane, £1,850 PCM London, SE18 6GW

1stavenue
Real Estate Services



TOTAL APPROX. FLOOR AREA 818 SQ.FT. (76.0 SQ.M.)

Whilst every attempt has been made to ensure the accuracy of the floor plan contained here, measurements of doors, windows, rooms and any other items are approximate and no responsibility is taken for any error, omission, or mis-statement. This plan is for illustrative purposes only and should be used as such by any prospective purchaser. The services, systems and appliances shown have not been tested and no guarantee as to their operability or efficiency can be given

Made with Metropix ©2015

Viewing by appointment with 1st avenue.

Call: 020 8293 8600

1st avenue, 128 Metcalfe Court, West Parkside, London SE10 0EL
email: info@1stavenue.co.uk

1stavenue
Real Estate Services

