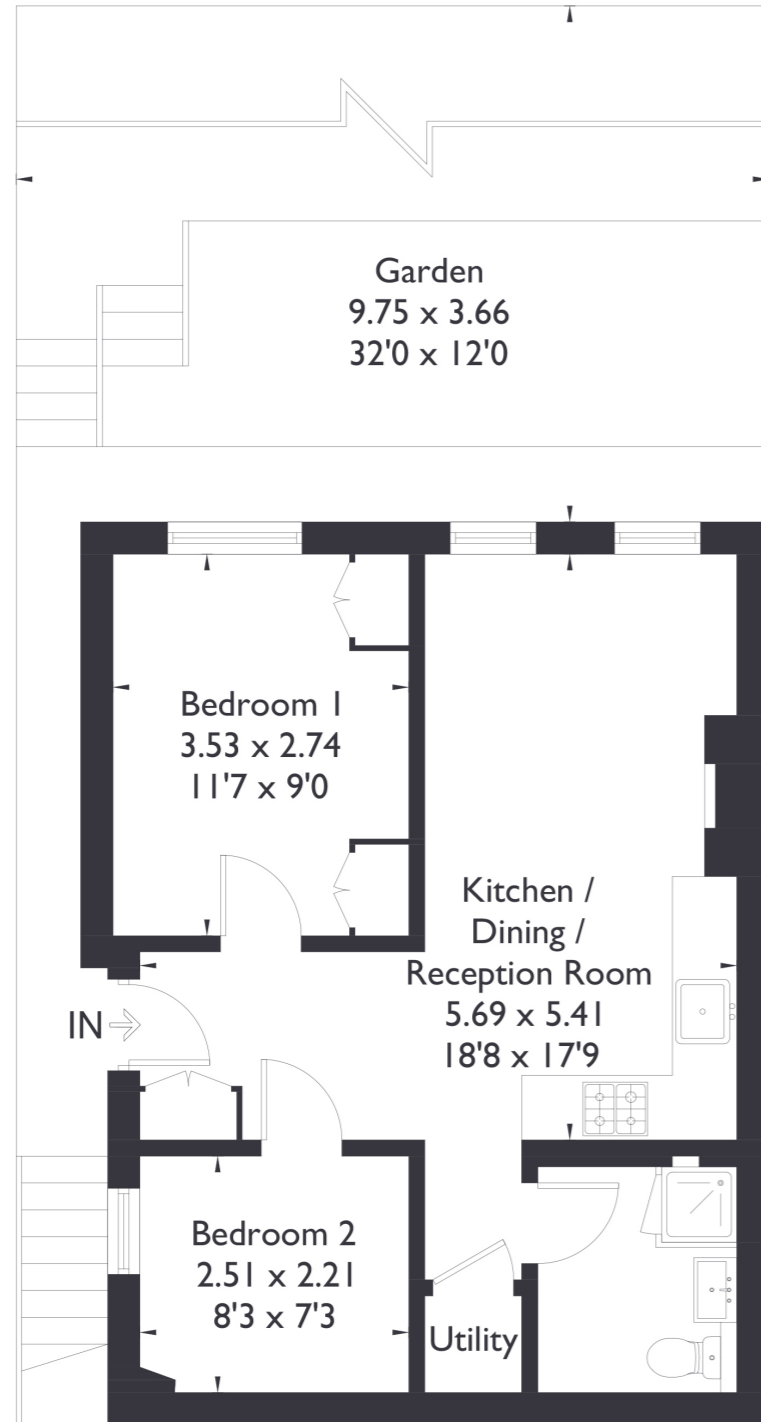


Lammas Park Road, W5

Approximate Floor Area = 44.3 sq m / 477 sq ft



Lower Ground Floor



2 BEDROOM FLAT

Lammas Park Road, W5

£549,950

Welcome to this delightful lower ground floor flat, a beautifully maintained two bedroom, one bathroom home featuring a spacious open-plan kitchen and living area. The property exudes warmth and charm, with every detail thoughtfully cared for, ensuring it presents in excellent condition.

Lovingly looked after by the current owners, this property is a perfect family home.

FEATURES

- Two Bedrooms
- One Bathrooms
- Open Plan Kitchen/ Living
- South Ealing Station
- Grange Primary School
- Shared Garden
- EPC Rating C



2 BEDROOM FLAT

Lammas Park Road, W5

In addition to private side access, the flat also benefits from access to a shared garden, offering a peaceful outdoor retreat. Situated just moments from the scenic Lammas Park, the location is unbeatable only a 10-minute walk from both Ealing Broadway and St Marys road vibrant amenities, as well as Northfields and South Ealing stations. The property also falls within the catchment area for the well regarded Grange Primary School, making it perfect for families and commuters alike. EPC Rating C.

