

**hastings**  
INTERNATIONAL



Frederick Square

£330,000

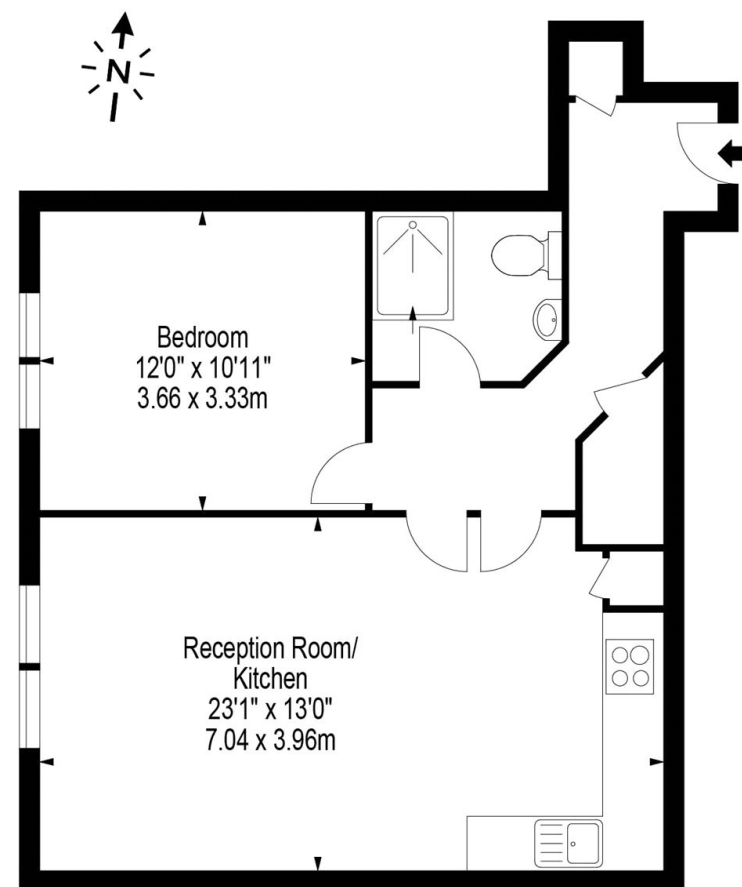
## Frederick Square, London SE16 5XR

A beautifully presented 584 sq ft, one double bedroom modern apartment with allocated parking located within a sought after Frederick Square, a river fronting development conveniently located for access to Rotherhithe and Canada Water stations together with Stave Hill Ecological Park.

This fantastic modern apartment comprises entrance hall with built-in storage cupboards, impressive 23 ft reception room with floor to ceiling windows, dining area, contemporary open plan fitted kitchen with work tops and integrated appliances, double bedroom and stylish shower room. The apartment has been modernised in recent years to include wood flooring and redecoration. Externally there are well kept communal areas, access to the Thames riverside walk and secure allocated parking. Rotherhithe and Canada Water stations together with Stave Hill Ecological Park are all within walking distance. The furniture is available to purchase under separate negotiation.

- Frederick Square SE16
- Generous Reception Room
- Stylish Interior
- Excellent Location
- 584 Sq Ft
- One Double Bedroom
- Secure Allocated Parking
- Riverside Development

### Frederick Square, London, SE16



Upper Ground Floor

Approx Gross Internal Area **584 Sq Ft - 54.25 Sq M**

Floor Plan Supplied For Identification Purposes Only And May Not Be Accurate  
Floor Plan by [www.elegantmediasolution.com](http://www.elegantmediasolution.com)



