



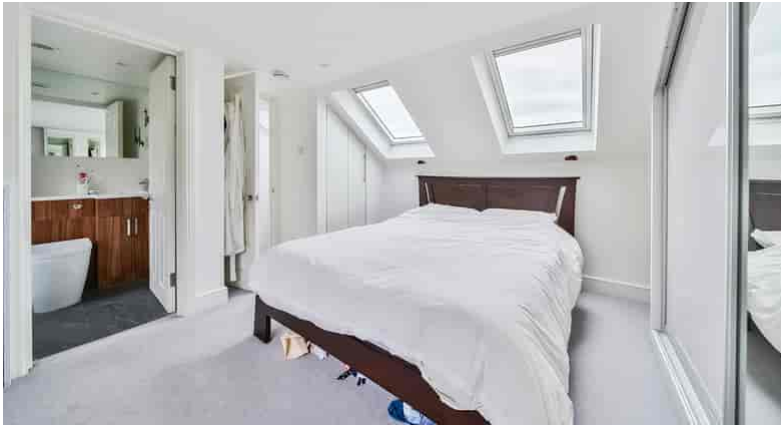
Thompson Avenue, Richmond, TW9 4JN

**Cow & Co**  
LONDON



A beautifully presented newly refurbished three bedroom terraced family home, with a larger than average garden and extended ground floor accommodation to include a formal reception room and a stunning newly fitted, kitchen/dining/ family room and a downstairs cloakroom. Upstairs, the house boasts two stunning bedrooms on the first floor with a modern fully fitted family bathroom also. The loft then provides another great sized bedroom with lots of storage and an en-suite bathroom. There is a great front and rear garden Viewings highly recommended.

Thompson Avenue is ideally located for Richmond Park and Kew Royal Botanic Gardens. The commuter is equally well catered for with Richmond, Kew Gardens and North Sheen stations close to hand with additional excellent bus services to Central London.

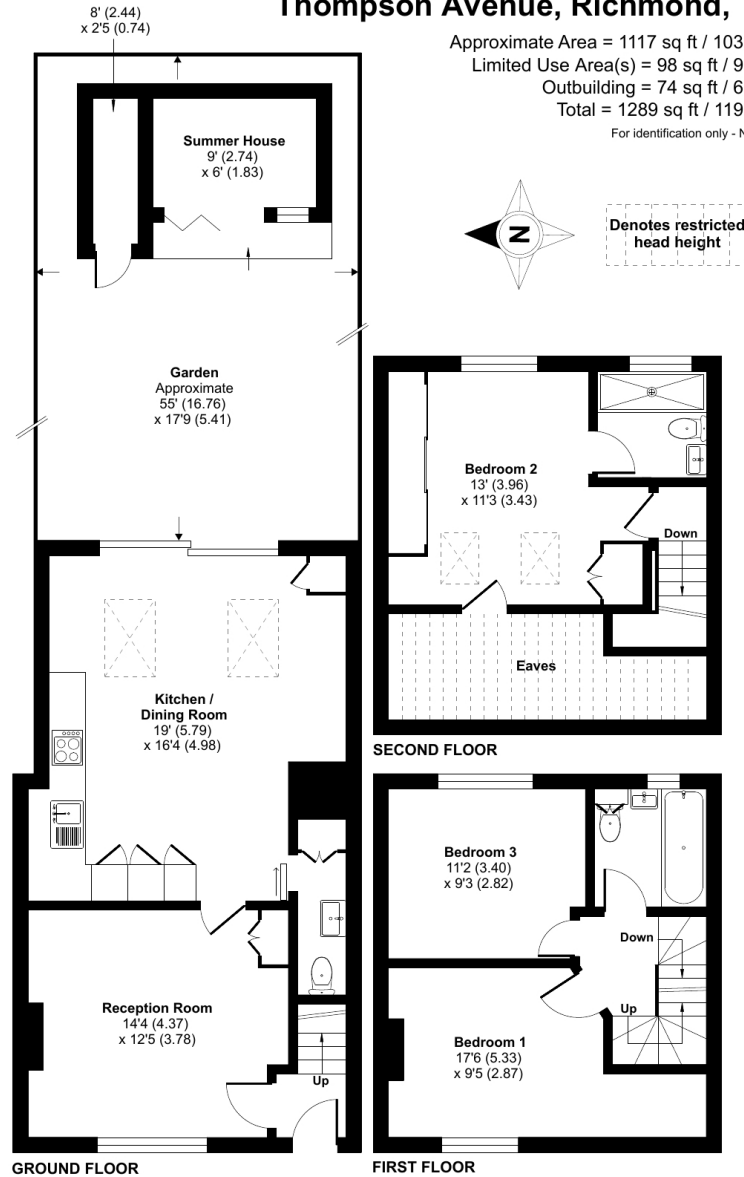


- Three bedroom bedroom family home
- Two bathrooms (one en-suite)
- Freehold house
- Open plan kitchen living area
- Large garden and garden office/room
- Completely refurbished to high standard throughout
- Cul-De-Sac location
- Kew station nearby

# Thompson Avenue, Richmond, TW9

Approximate Area = 1117 sq ft / 103.7 sq m  
 Limited Use Area(s) = 98 sq ft / 9.1 sq m  
 Outbuilding = 74 sq ft / 6.8 sq m  
 Total = 1289 sq ft / 119.7 sq m

For identification only - Not to scale



Floor plan produced in accordance with RICS Property Measurement Standards incorporating International Property Measurement Standards (IPMS2 Residential). © nchecon 2024. Produced for Cow & Co Properties Ltd. REF: 1141024

Tel: 0208 065 0010  
 Email: thehub@cowandco-london.com  
 Web: cowandco-london.com

Agents note: All measurements are approximate and whilst every attempt has been made to ensure accuracy they are for general guidance only and must not be relied on. The fixture and fittings referred to have not been tested and therefore no guarantee can be given that they are in working order. Internal photographs are reproduced for general information and it must not be inferred that any item shown is included with the property.

**Cow & Co**  
 LONDON