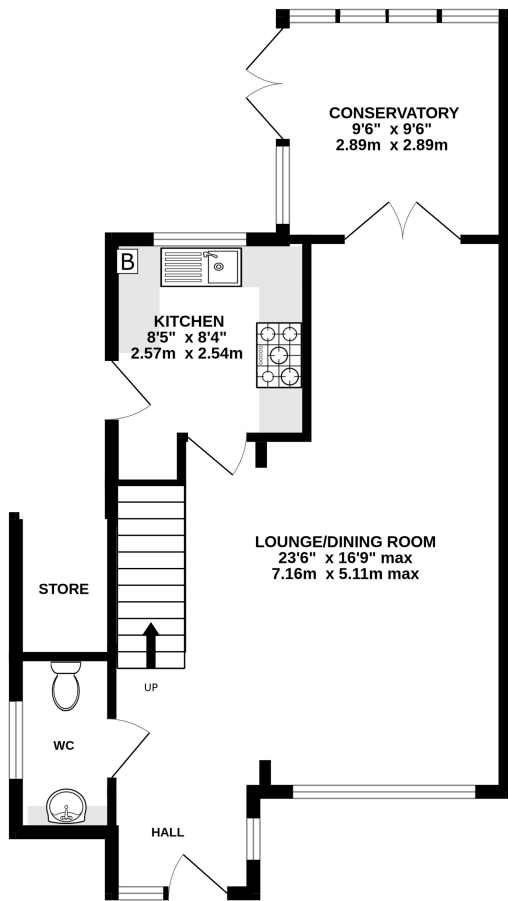


Walnut Tree Road, Shepperton, TW17 0RW
£499,950

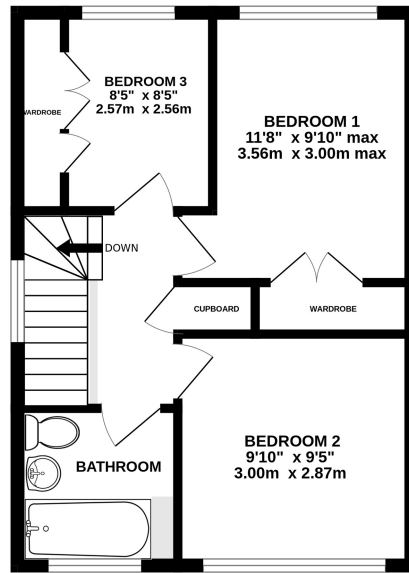


- Open Day Saturday 4th May, Please Call To Book
- Modern Kitchen, Bathroom and Downstairs WC
- Driveway For Two Vehicles
- Freehold, Council Tax Band D £2304
- Refurbished Three Bedroom Semi Detached House
- South Facing Garden Backing Onto Paddock
- Within Catchment Area for Littleton and Saxon Schools

GROUND FLOOR
562 sq.ft. (52.2 sq.m.) approx.

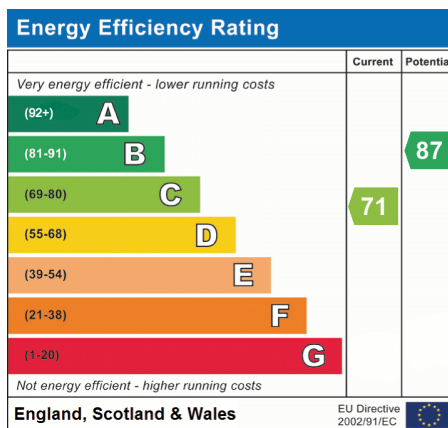


1ST FLOOR
393 sq.ft. (36.5 sq.m.) approx.



TOTAL FLOOR AREA : 954 sq.ft. (88.7 sq.m.) approx.

Whilst every attempt has been made to ensure the accuracy of the floorplan contained here, measurements of doors, windows, rooms and any other items are approximate and no responsibility is taken for any error, omission or mis-statement. This plan is for illustrative purposes only and should be used as such by any prospective purchaser. The services, systems and appliances shown have not been tested and no guarantee as to their operability or efficiency can be given.
Made with Metropix ©2024



We have not tested the services or domestic appliances so we cannot verify that they are in working order. The buyer is advised to obtain verification from their solicitor or surveyor. These particulars form no part of any offer or contract and their accuracy cannot be guaranteed.