

£275,000
Freehold



THOMAS CONNOLLY
ESTATE AGENTS | LETTING AGENTS | NEW HOMES | PROPERTY MANAGEMENT

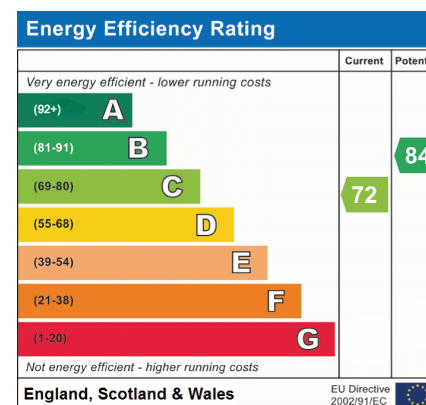


Summary of Property

Thomas Connolly Estate Agents are delighted to present this 5 bedroom mid terraced property, situated in Netherfield, Milton Keynes. Netherfield is well connected to nearby towns and the wider Milton Keynes area, allowing for easy access to a wider range of amenities. Additionally, Netherfield Local Centre, which includes a Co-op, Subway, Post office and pharmacy, is just a short walk from the home.

As you enter this property, you are greeted by an entrance hall, which leads to the large, contemporary kitchen. The ground floor also offers bedroom one, with an en-suite bathroom. The first floor offers the fourth bedroom, family bathroom and sitting room. The second floor comprises of bedrooms two and three, with a family bathroom. Outside, there is driveway with parking for two cars, and a good-sized rear garden.

Please contact Thomas Connolly Estate Agents for further information relating to this property or to confirm viewing arrangements.



Room Descriptions

KITCHEN / DINING ROOM

12' 2" x 14' 6" (3.71m x 4.42m)

BEDROOM ONE

12' 6" x 9' 4" (3.81m x 2.84m)

EN-SUITE TO BEDROOM ONE

FIRST FLOOR

BEDROOM FOUR

10' 8" x 8' 0" (3.25m x 2.44m)

BEDROOM THREE

12' 10" x 14' 8" (3.91m x 4.47m)

FAMILY BATHROOM

7' 0" x 4' 3" (2.13m x 1.30m)

SECOND FLOOR

BEDROOM TWO

9' 8" x 14' 7" (2.95m x 4.45m)

SHOWER ROOM

7' 0" x 5' 9" (2.13m x 1.75m)

BEDROOM FIVE

10' 8" x 8' 0" (3.25m x 2.44m)

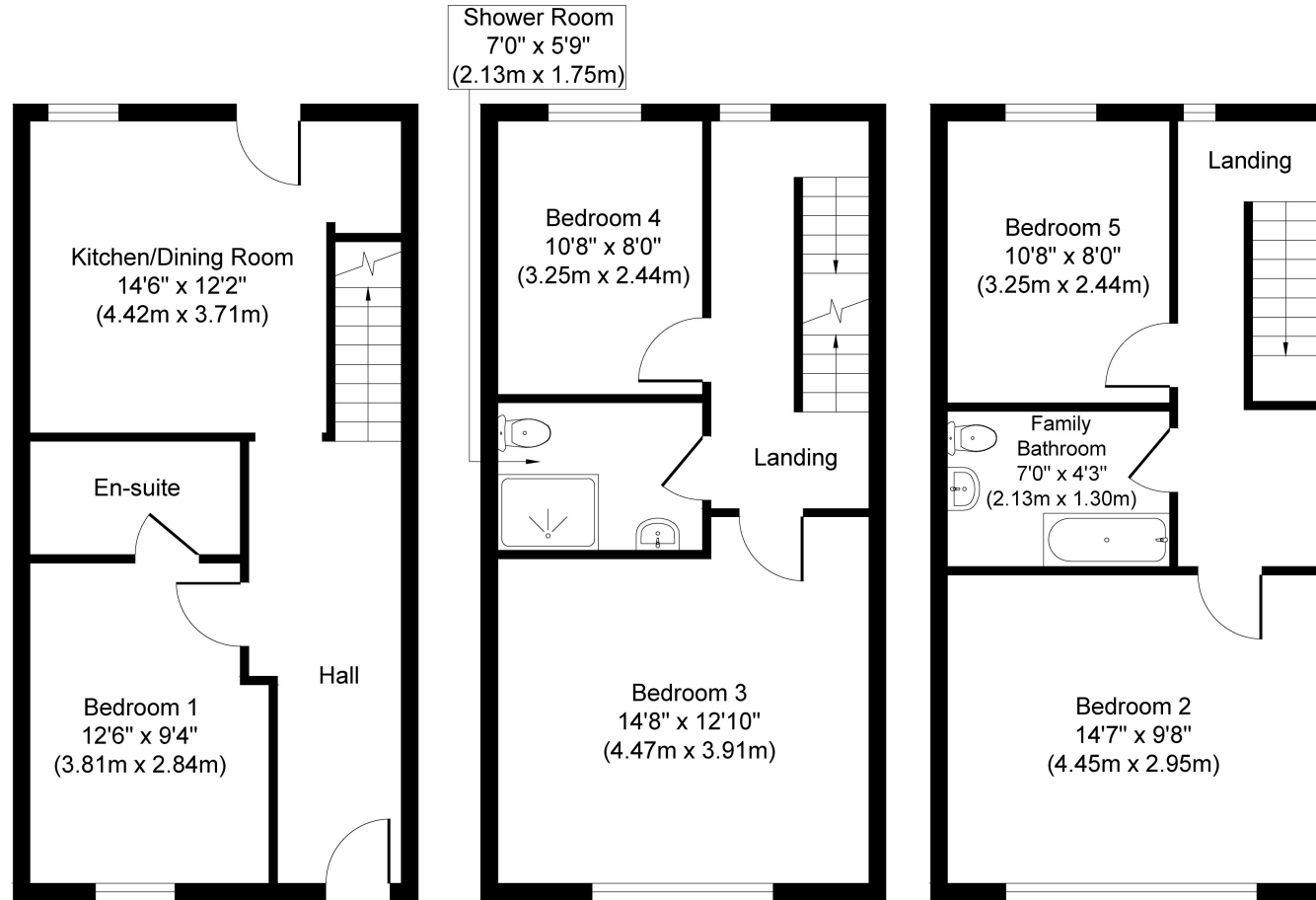
REAR GARDEN

DRIVEWAY PARKING FOR TWO CARS



THOMAS CONNOLLY

ESTATE AGENTS | LETTING AGENTS | NEW HOMES | PROPERTY MANAGEMENT



Ground Floor

First Floor

Second Floor

Approx. Gross Internal Floor Area 1,294 sq. ft. (120.21 sq. m.)

Whilst every attempt has been made to ensure the accuracy of the floor plan contained here, measurements of doors, windows, rooms and any other items are approximate and no responsibility is taken for any error, omission, or mis-statement. This plan is for illustrative purposes only and should be used as such by any prospective purchaser or tenant. The services, systems and appliances shown have not been tested and no guarantee as to their operability or efficiency can be given.

Copyright V360 Ltd 2023 | www.houseviz.com