



19 Auburn Road, Onchan, Isle of Man. IM3 1LP

Spacious 2383 sq/ft Detached property sat on a large double plot, spacious lounge extension, off road parking for 3 vehicles, double garaging, potential to add 2 further bedrooms & bathroom STPP on the first floor.



£399,950 Freehold

PROPERTY DESCRIPTION

Nestled in the charming Onchan, 19 Auburn Road is a distinctive 2-bedroom detached house situated on a double plot, offering a spacious living experience. The property boasts a well-designed lounge extension, creating a welcoming atmosphere for relaxation and entertainment. The extension adds to the overall sense of space, providing an inviting area to unwind with family and friends. Additionally, the property features off-road parking for up to 3 vehicles, ensuring convenience for residents and their guests.

A notable feature of 19 Auburn Road is the potential for expansion on the first floor, subject to planning permission. The property offers the opportunity to add 2 further bedrooms and a bathroom, providing flexibility for future growth or customization according to the homeowner's needs. With double garaging already in place, the property showcases its adaptability and potential for those looking to create a home that evolves with their lifestyle. This residence combines practicality and potential, making it an attractive option in the charming community of Onchan

FEATURES

- Detached property sat on a large double plot close to Onchan amenities
- Spacious 2383 sq/ft Property
- Lounge/Diner, Breakfast Kitchen
- 2 Bedrooms Downstairs, Family Bathroom
- Upstairs – space for 2 bedrooms and shared bathroom STPP plus storage
- Integrated Double Garage & Off Road Parking for 3 Vehicles
- Part Double Glazed
- Gas Fired Central Heating
- Split Level Gardens, Vegetable Patch
- Garage Flat Roof has recently been fibreglassed

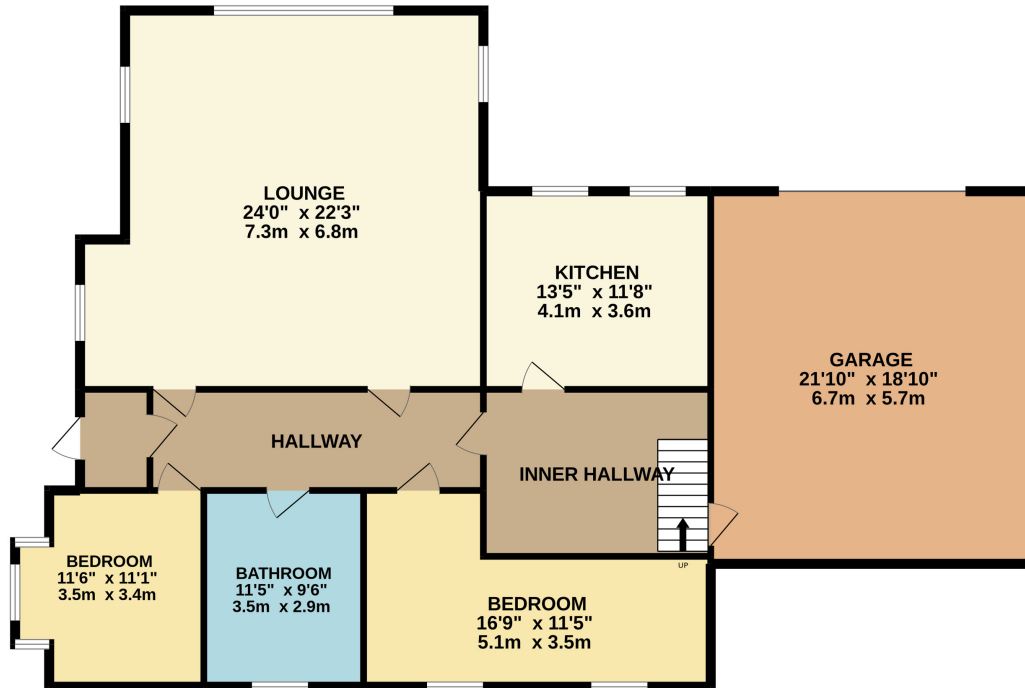


Property Images



FLOORPLAN

GROUND FLOOR
1736 sq.ft. (161.3 sq.m.) approx.



1ST FLOOR
647 sq.ft. (60.1 sq.m.) approx.



TOTAL FLOOR AREA : 2383 sq.ft. (221.4 sq.m.) approx.

Whilst every attempt has been made to ensure the accuracy of the floorplan contained here, measurements of doors, windows, rooms and any other items are approximate and no responsibility is taken for any error, omission or mis-statement. This plan is for illustrative purposes only and should be used as such by any prospective purchaser. The services, systems and appliances shown have not been tested and no guarantee as to their operability or efficiency can be given.
Made with Metropix ©2022

DISCLAIMER: Whilst Manxmove Ltd believe that these details are correct, neither Manxmove Ltd or their clients guarantee their accuracy in any way. Consequently, these details are not to be used to form part of any legally binding contract. Prospective purchasers or tenants are advised to visit this property to satisfy themselves as to the correctness of these details. Please note, we use wide angle camera lenses in order to show as much of each room as possible. This is not intended to mislead any prospective purchasers or tenants in any way and an honest verbal description is always available prior to viewing if required.