



## Edison Court, Greenroof Way, London, SE10 0DQ

£1,375 PCM

Situated in the heart of Greenwich Millennium Village a smart one bedroom apartment with allocated parking. The property briefly comprises reception/dining room open plan to kitchen, private terrace with views of the Canary Wharf skyline, double bedroom and bathroom. The apartment further features 24 hour concierge and excellent transport links. Offered furnished. AVAILABLE 24th JULY 2018.

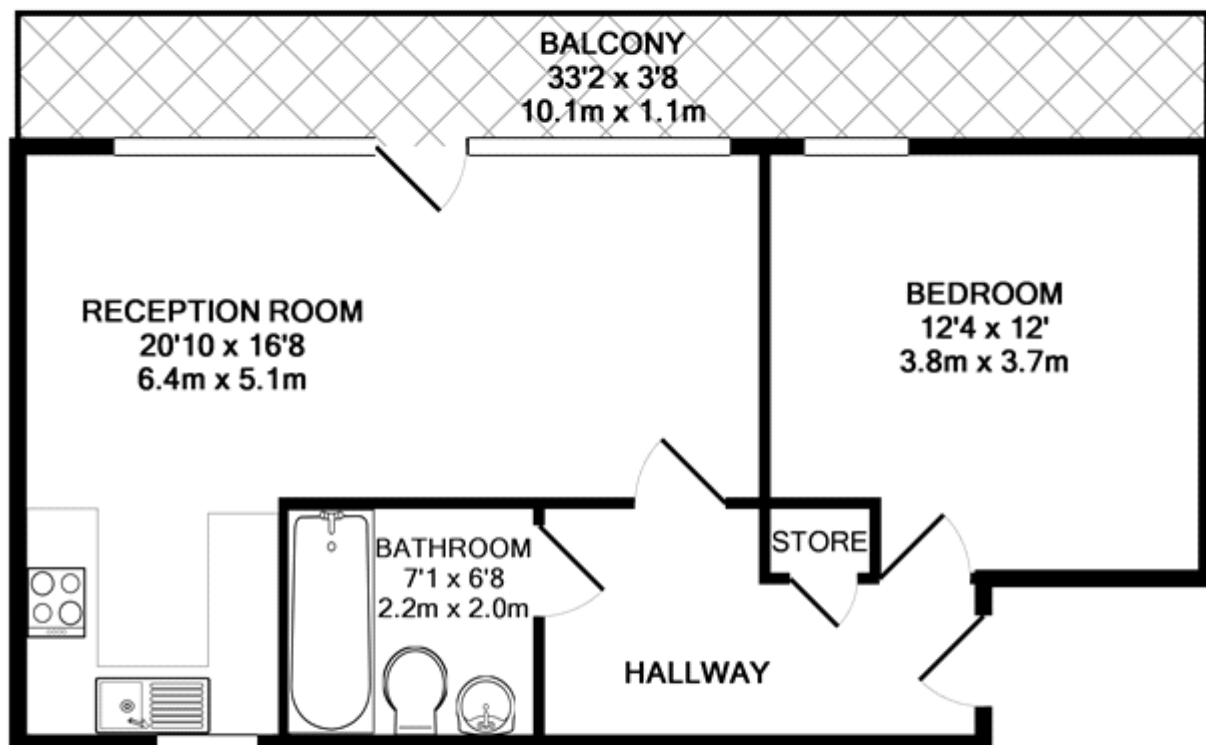
Viewing by appointment with 1st avenue.

**Call: 020 8293 8600**

1st avenue, 128 Metcalfe Court, West Parkside, London SE10 0EL  
email: [info@1stavenue.co.uk](mailto:info@1stavenue.co.uk)

# Edison Court, Greenroof Way, £1,375 PCM London, SE10 0DQ

**1stavenue**  
Real Estate Services



TOTAL APPROX. FLOOR AREA 523 SQ.FT. (48.6 SQ.M.)

Whilst every attempt has been made to ensure the accuracy of the floor plan contained here, measurements of doors, windows, rooms and any other items are approximate and no responsibility is taken for any error, omission, or mis-statement. This plan is for illustrative purposes only and should be used as such by any prospective purchaser. The services, systems and appliances shown have not been tested and no guarantee as to their operability or efficiency can be given

Made with Metropix ©2016

Viewing by appointment with 1st avenue.

**Call: 020 8293 8600**

1st avenue, 128 Metcalfe Court, West Parkside, London SE10 0EL  
email: [info@1stavenue.co.uk](mailto:info@1stavenue.co.uk)

**1stavenue**  
Real Estate Services