

6 Park Avenue, Orpington, Kent, BR6 9EH

Property Images

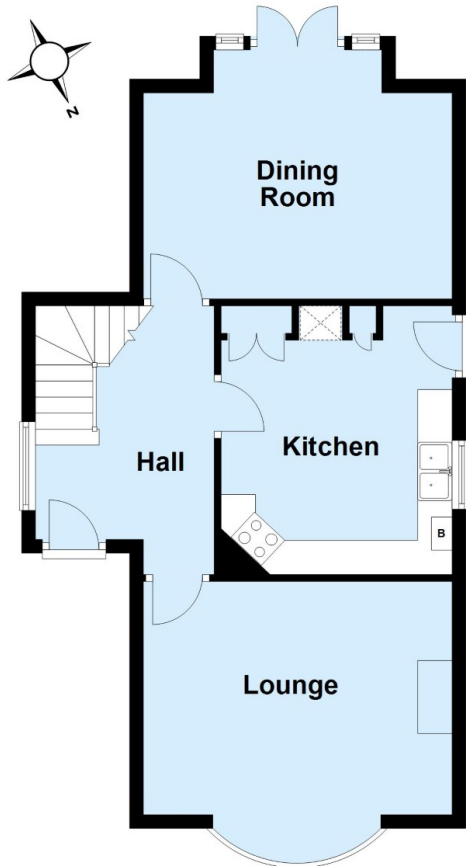






Ground Floor

Approx. 54.4 sq. metres (585.8 sq. feet)



First Floor

Approx. 55.8 sq. metres (600.9 sq. feet)



Total area: approx. 110.3 sq. metres (1186.7 sq. feet)

This plan is for general layout guidance and may not be to scale.
Plan produced using PlanUp.