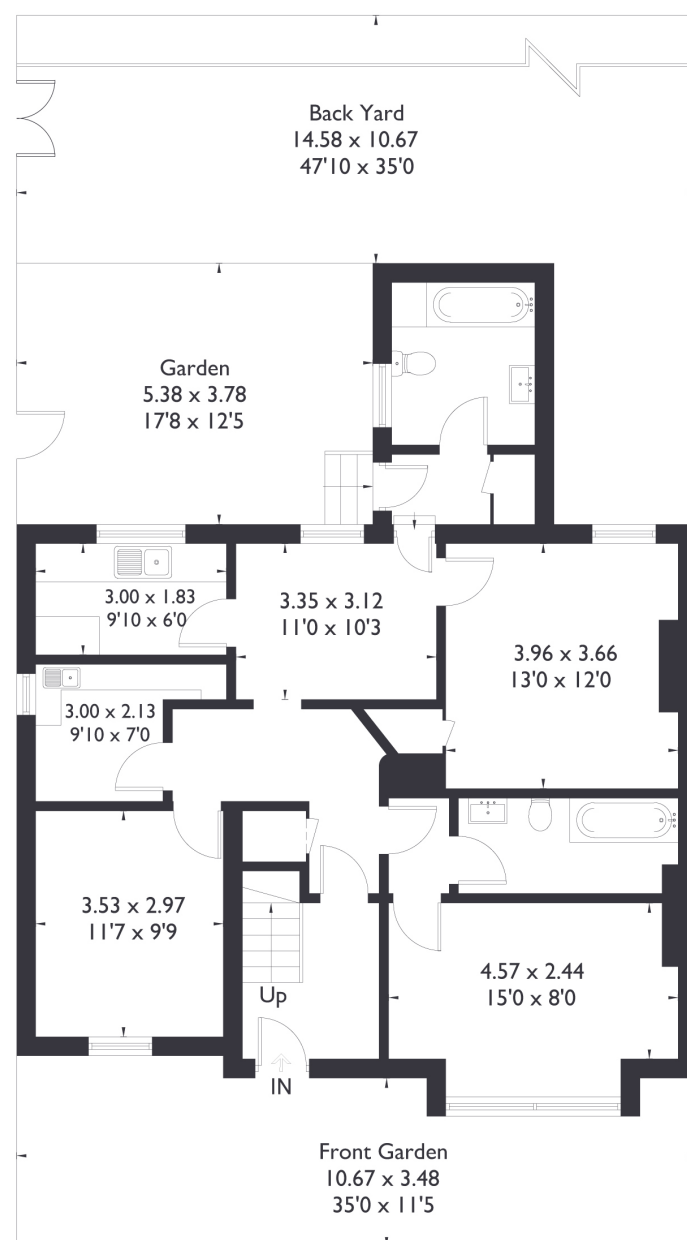


## Boston Road, W7

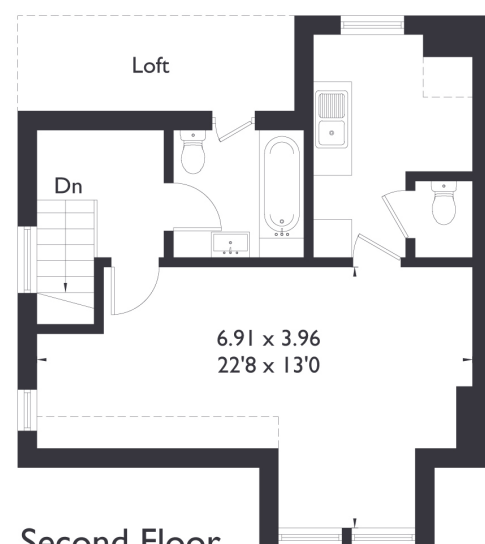
Approximate Floor Area = 189.6 sq m / 2041 sq ft



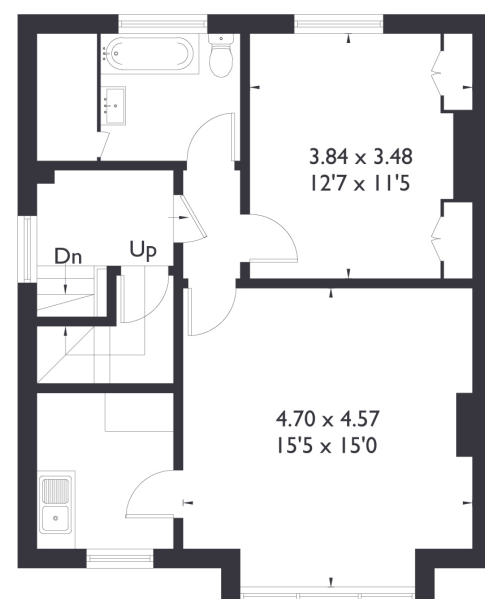
= Reduced head height below 1.5m



Ground Floor



Second Floor



First Floor



### 5 BEDROOM HOUSE

## Boston Road, W7

£1,175,000

Welcome to this exceptional investment opportunity in prime Hanwell.

Currently arranged as four self-contained apartments, this property offers incredible potential for redevelopment or a buy-to-let investment.

### FEATURES

- Five Bedrooms
- Four Bathrooms
- Arranged as Four Flats
- Plenty of Potential
- Boston Manor Station
- Hanwell Station (Elizabeth Line)
- EPC Rating D





5 BEDROOM HOUSE

**Boston Road, W7**  
**£1,175,000**

Boasting a spacious garden, it is ideally located close to local amenities and excellent transport links, including the Elizabeth Line.

Additionally, the property falls within the catchment area for Oaklands Primary and Elthorne High School, making it a desirable choice for families and investors alike.

