



Tel: 01242 676767

www.cotswoldestateagents.co.uk

41a Church Road, Bishops Cleeve, Cheltenham, GL52 8LP

9, Stoke Park Close
Bishops Cleeve GL52 8UL

£570,000



REDUCED

Cotswold Estate Agents are delighted to offer for sale this substantial stone built four bedroom detached house. The property is situated in a highly desirable village location within a quiet cul-de-sac just off Stoke Road. The well planned living accommodation features cloakroom, lounge, conservatory, separate dining room, kitchen/ breakfast room and utility room. On the first floor there is an impressive galleried landing, family bathroom, four good size bedrooms the main with en-suite. Outside is an attractive generous rear garden with summer house and a block paved driveway leads to a detached double garage. ** NO ONWARD CHAIN **

Location: Bishops Cleeve, a popular village with both families and professionals alike. The centre has become a hive for activity over recent years making it extremely easy for day to day living, with two large supermarkets, excellent eateries and a lively café scene in addition to doctor's surgeries and dentist. A church, active village hall, an excellent local secondary and three primary schools have further secured its status as one of the more sought-after locations. Whilst beautiful walking and riding countryside surrounds the village, including Cleeve Hill, Cheltenham is only four miles away. A fashionable town with excellent leisure, shopping and cultural offerings including the many festivals it hosts. For the commuter transport links are strong with regular bus routes and easy access to the M5 Tewkesbury and M4 corridor via the A40/A419.

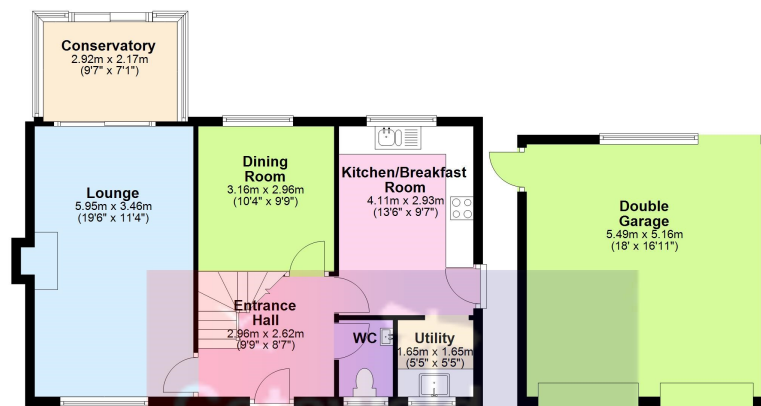






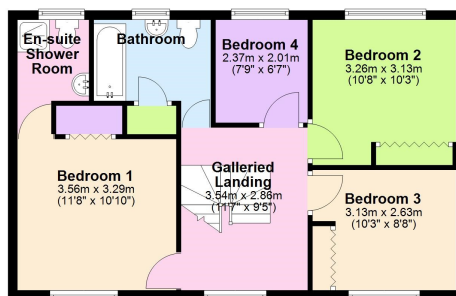
Ground Floor

Approx. 91.3 sq. metres (982.4 sq. feet)



First Floor

Approx. 58.6 sq. metres (631.0 sq. feet)



Total area: approx. 149.9 sq. metres (1613.4 sq. feet)

