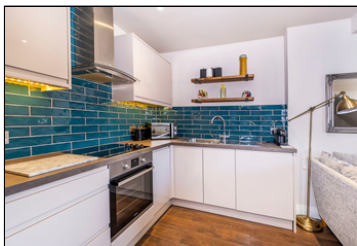
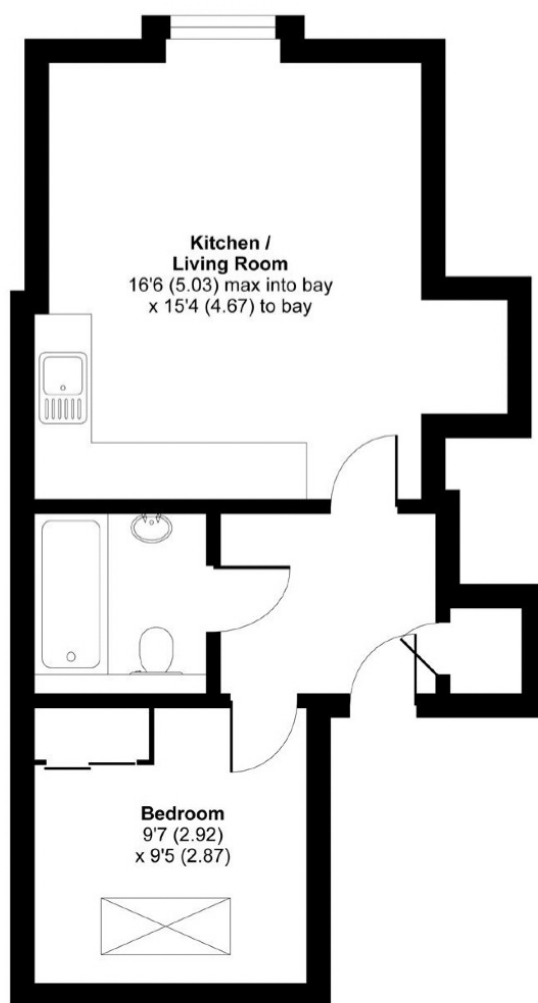


Glebeland Gardens, Shepperton, TW17 9AT

£235,000



- Modern One Bedroom Apartment
- Central Location in Shepperton Village
- Double Bedroom with Built in Wardrobes
- Leasehold
- Open Plan Kitchen Living Room
- Built in 2018
- Security Entrance System
- Council Tax Band B



SECOND FLOOR

Energy Efficiency Rating		
	Current	Potential
Very energy efficient - lower running costs		
(92+) A		
(81-91) B	83	83
(69-80) C		
(55-68) D		
(39-54) E		
(21-38) F		
(1-20) G		
Not energy efficient - higher running costs		
England, Scotland & Wales		
	EU Directive 2002/91/EC	

We have not tested the services or domestic appliances so we cannot verify that they are in working order. The buyer is advised to obtain verification from their solicitor or surveyor. These particulars form no part of any offer or contract and their accuracy cannot be guaranteed.