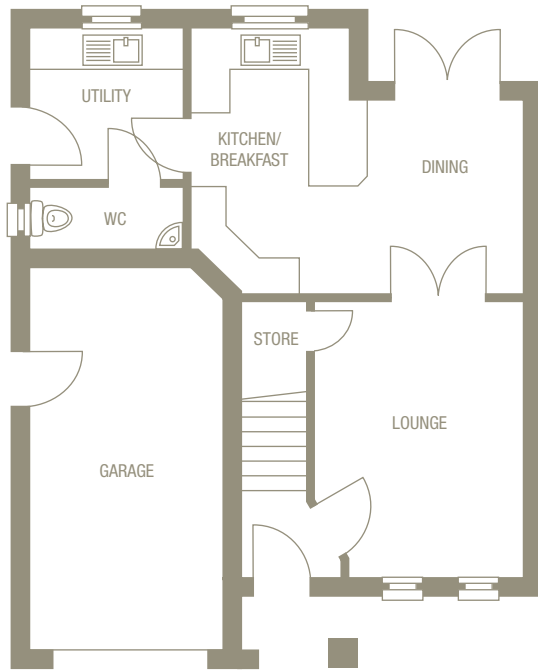


The Rufford

3 bedroom detached home with garage.

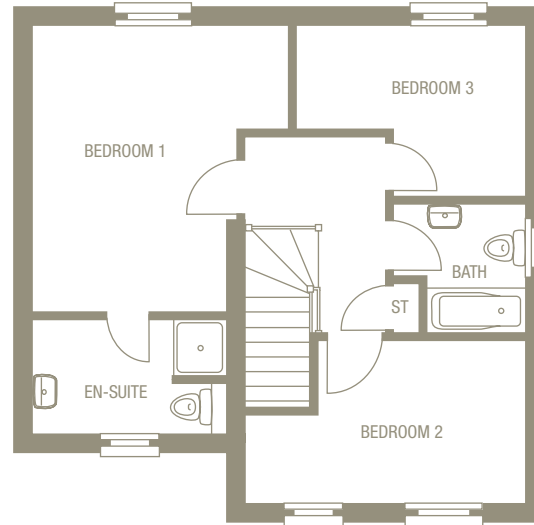


The Rufford is a fantastic family home complemented by fine architecture and a modern and spacious interior which has been carefully designed around today's lifestyle.



Ground Floor

Room	Size
Lounge	4230* x 3300*mm 13'9"* x 10'10"*
Kitchen/Dining/ Breakfast	5100* x 4085*mm 16'9"* x 13'4"*
Utility	2340 x 2400mm 7'7" x 7'10"
Cloakroom	2340 x 1450mm 7'7" x 4'8"
Garage	6050* x 3000*mm 19'8"* x 9'8"*



First Floor

Room	Size
Bedroom 1	4420* x 3945*mm 14'6"* x 12'9"*
En-Suite	2950 x 1750mm 9'7" x 5'9"
Bedroom 2	4290* x 2500*mm 14'1"* x 8'2"*
Bedroom 3	3530* x 2740*mm 11'6"* x 9'0"*
Bathroom	2025 x 1800mm 6'6" x 6'3"

1,056 total sq ft

*Denotes maximum room dimensions. This is a computer generated image of The Rufford, elevation treatment may vary. All internal images are indicative of a Morris house type. Room sizes are approximate. Plots may be handed and any garages may be single or double. Kitchen and bathroom layouts are indicative. These plans are correct at time of going to press, but may be subject to change during construction. Please ensure that you check for specific plot details.

