

FOR SALE

OIEO £400,000

Blandford Road, Beckenham, Kent, BR3



A wonderful opportunity to own this charming two bedroom first floor maisonette with its own private entrance and wonderful private garden. Situated nearby to multiple local amenities, excellent transport links and low service charge.



Beautifully maintained and full of charm, this two bedroom first floor maisonette offers comfortable living with the added benefits of its own private entrance and a well presented rear garden with outdoor cover.

Inside, the property features a bright and welcoming living room, a well-appointed eat-in kitchen, two good sized bedrooms, and a modern bathroom. Additional highlights include double glazing and gas central heating, ensuring comfort and efficiency year-round.

Ideally located, this property is within easy reach of Clock House, Birkbeck, and Kent House stations, providing excellent connections into Central London. A great selection of local amenities are close by, including schools, coffee shops, gyms, restaurants and bars all just a short walk away, while the nearby South Norwood Country Park and Cator Park are some of the many green spaces in close proximity to this wonderful home.

This home is a fantastic opportunity for first-time buyers, downsizers, or anyone looking to enjoy both convenience.. Early viewings are highly recommended!

- First Floor Maisonette
- Two Bedrooms
- Private Entrance
- Private Garden
- Excellent Transport Links
- EPC Rating C



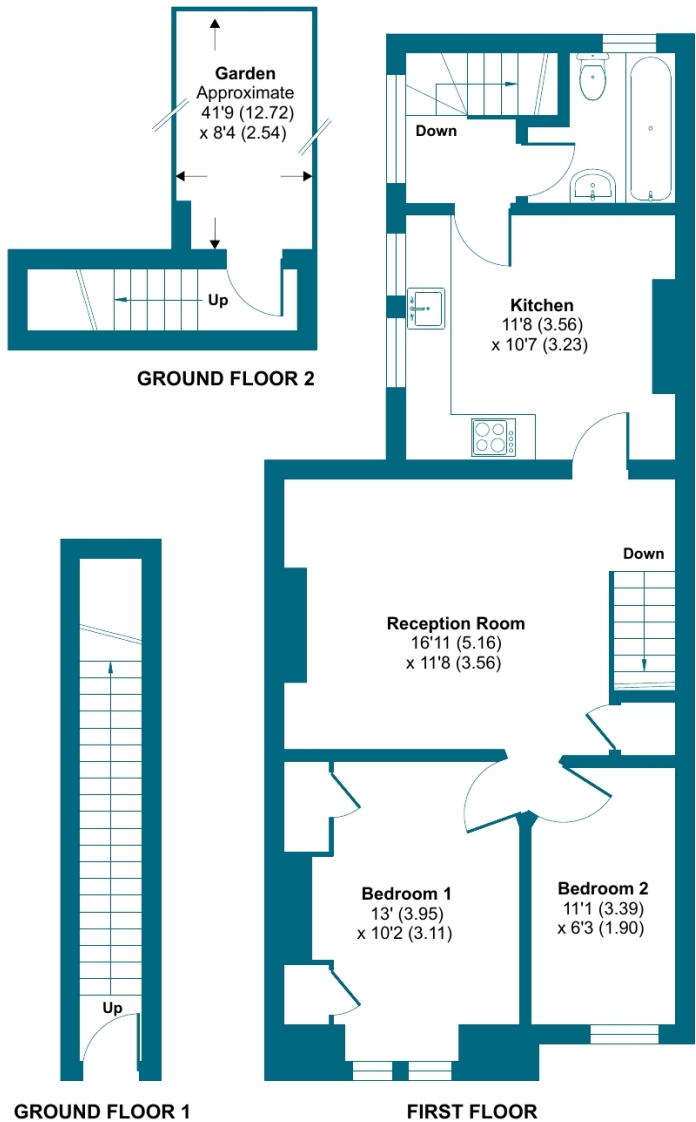






# Blandford Road, Beckenham, BR3

Approximate Area = 715 sq ft / 66.4 sq m  
For identification only - Not to scale



Floor plan produced in accordance with RICS Property Measurement 2nd Edition, Incorporating International Property Measurement Standards (IPMS2 Residential). © nitchecom 2025. Produced for Grafton Estate Agents. REF: 1293453

