

**2 Bedroom(s), Apartment, Leasehold**

**The Potteries, New Rossington.**



- No chain
- First floor apartment
- Bathroom
- Lounge
- Popular location in New Rossington

- 3D Virtual tour available
- Two bedrooms
- Kitchen
- Allocated car parking space and visitor parking
- Great Transport/Motorway Links

**£90,000**  
**Reduced**

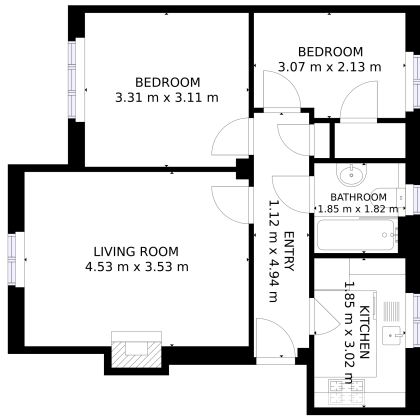
*Book your viewing today* Tel: 01302 247754

## Owner's View

3D Virtual Tour Available- Take a closer, more detailed look around via our 3D Virtual Tour! Don't forget that you can also check availability for viewings online via a visit to our website... Welcome to your new home in the heart of The Potteries, New Rossington, Doncaster! This delightful first-floor 2-bedroom flat offers a perfect blend of modern comfort and convenience in a charming neighbourhood. With the added benefit of no chain, this property is ready for you to move in and make it your own.

<http://www.thepropertyhive.co.uk/property-for-sale/details/26489848>

## Floor Plan



FLOOR 1

GROSS INTERNAL AREA  
TOTAL: 52 m<sup>2</sup>  
SIZE AND DIMENSIONS ARE APPROXIMATE. SOCIAL MAY VARY

 Matterport

## Kitchen





*We make it happen.*

Tel: 01302 247754 Email: [info@thepropertyhive.co.uk](mailto:info@thepropertyhive.co.uk) Web: [www.thepropertyhive.co.uk](http://www.thepropertyhive.co.uk)

## Energy Performance Certificate

Energy Efficiency Rating		
	Current	Potential
<i>Very energy efficient - lower running costs</i>		
(92-100) <b>A</b>		
(81-91) <b>B</b>		84
(69-80) <b>C</b>	73	
(55-68) <b>D</b>		
(39-54) <b>E</b>		
(21-38) <b>F</b>		
(1-20) <b>G</b>		
<i>Not energy efficient - higher running costs</i>		
<b>England, Scotland &amp; Wales</b>	EU Directive 2002/91/EC	