



Court View, 2 Branksome Wood Road, Bournemouth BH2 6BY



## About the Property

The apartment boasts two generously sized bedrooms, both equipped with fitted wardrobes, providing ample storage space. The main bedroom benefits from the added luxury of an en-suite bathroom, while the second bathroom serves the rest of the apartment. The spacious accommodation is thoughtfully designed, with a bright and airy open-plan lounge and kitchen area. This layout offers a perfect space for relaxing and entertaining.

The kitchen comes fully equipped with integrated appliances, including a fridge freezer, washing machine, and dishwasher, making it ideal for modern living. The flat also offers ample storage space. The living area opens up onto a good-sized balcony, which overlooks the beautiful gardens at the rear of the property.

Additionally, the property benefits from underground parking, ensuring secure and convenient parking for residents. The apartment also comprises electric heating and no gas throughout. With its prime location, modern features, and excellent condition, this flat is an ideal choice for those seeking a comfortable home within close proximity to the amenities and attractions of Bournemouth. Viewing is highly recommended to appreciate everything this property has to offer.

The property is situated close to Bournemouth town centre offering a wide range of shops, restaurants, cafes and leisure facilities plus the famous blue flag sandy beaches. The premier facilities of the superb West Hants Tennis and Leisure Club and Meyrick Park golf course are also nearby. Access to the rest of the UK for a short break away is easy with good road links, mainline railway and coach stations with regular routes across the South West covering Reading, Plymouth, Portsmouth and London Waterloo.

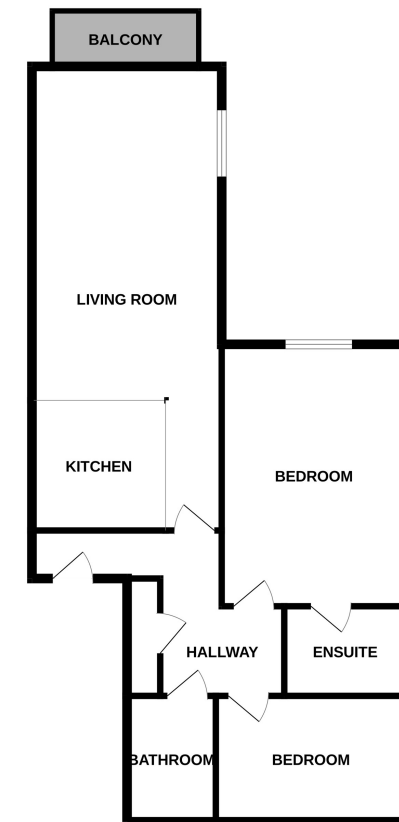
Mays Residential Lettings are members of ARLA Propertymark.

Our Client Money Protection is supplied by Propertymark Client Money Protection Scheme.

Mays are part of the Property Ombudsman Scheme TPO - DO3138

## Key Features

- Two bedroom apartment
- Large open-plan kitchen/living room
- Fitted kitchen with integrated appliances
- Unfurnished
- Ample storage
- Raised ground floor flat
- Balcony overlooking Bournemouth Gardens
- Underground parking space
- Two bathrooms (one en-suite)
- Well presented apartment throughout









### About Mays

We understand that property is a people business, and pride ourselves on having a diverse and multi-talented team of property professionals.

We have been successfully selling and letting property for more than 30 years, and our wealth of local knowledge combined with our experience in both the London market and overseas property, means our team can handle anything that comes their way.

Our reputation is a result of the unsurpassed level of service we offer and importantly the results we achieve for our clients. Our ethos is to 'Bring People and Property Together', after all it's what we've been doing so well for so long.

**MAYS**  
ESTATE AGENTS

### Mays Estate Agents - LETTINGS

290 Sandbanks Road, Poole, Dorset BH14 8HX

T: 01202 709888

E: [lettings@maysestateagents.com](mailto:lettings@maysestateagents.com)

[www.maysestateagents.com](http://www.maysestateagents.com)

Mays Residential Lettings are members of ARLA Propertymark.  
Our Client Money Protection is supplied by Propertymark Client Money Protection Scheme.  
Mays are part of the Property Ombudsman Scheme TPO - DO3138

