



Petersfield Road, London, W3 8NY

Cow & Co
LONDON



Presented in excellent condition throughout, this spacious and bright two bedroom property is arranged over two floors of a period terrace on a quiet tree lined residential street. This light filled maisonette features a stunning galleried kitchen diner with a south-facing private garden, a modern bathroom, a separate WC and a larger than average double reception room.

The green spaces of Southfield Recreation Ground are moments away as well local amenities on Acton Lane with the wide range of shops, bars and restaurants of Chiswick High Road also close by. Situated within the catchment of the Ofsted rated outstanding Ark Priory Primary Academy. Chiswick Park tube station is just over three quarters of a mile away and South Acton station (Overground) is less than half a mile away.



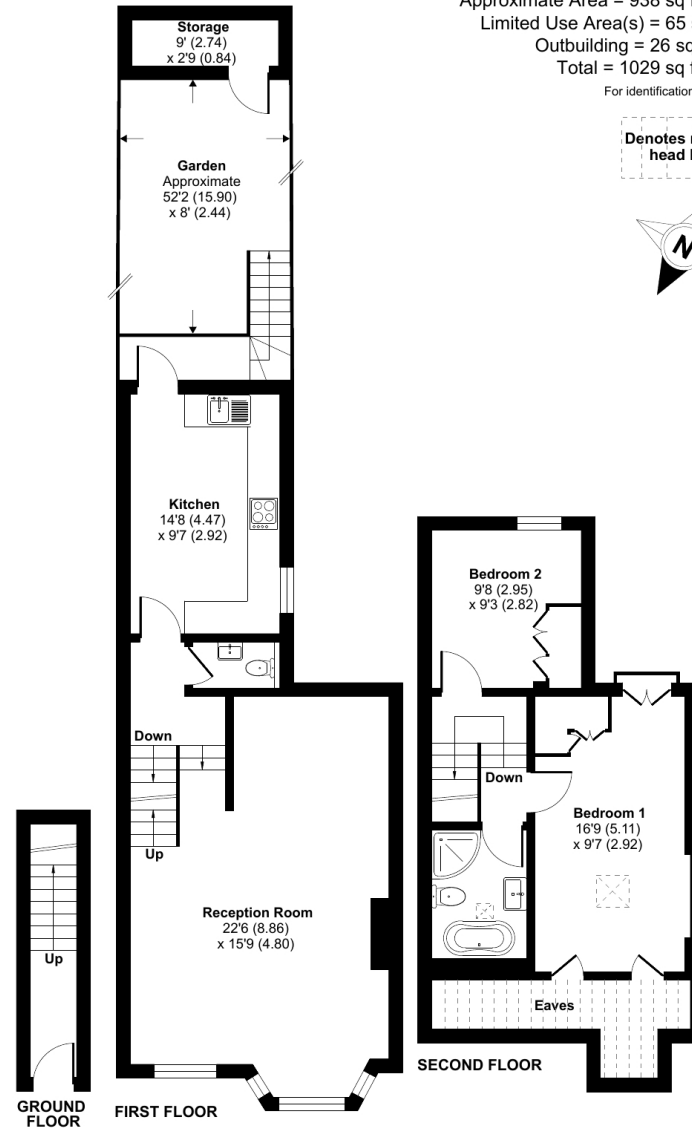
- Two bedroom apartment
- Newly refurbished throughout
- Stunning eat in kitchen
- Private garden
- Arranged over 2 floors of a period terrace
- Private entrance
- Share of Freehold
- Popular residential street

Petersfield Road, London, W3

Approximate Area = 938 sq ft / 87.1 sq m
Limited Use Area(s) = 65 sq ft / 6 sq m
Outbuilding = 26 sq ft / 2.4 sq m
Total = 1029 sq ft / 95.5 sq m

For identification only - Not to scale

Denotes restricted head height



Floor plan produced in accordance with RICS Property Measurement Standards incorporating International Property Measurement Standards (IPMS2 Residential). © nchecon 2024. Produced for Cow & Co Properties Ltd. REF: 1147958

Tel: 0208 065 0010
Email: thehub@cowandco-london.com
Web: cowandco-london.com

Agents note: All measurements are approximate and whilst every attempt has been made to ensure accuracy they are for general guidance only and must not be relied on. The fixture and fittings referred to have not been tested and therefore no guarantee can be given that they are in working order. Internal photographs are reproduced for general information and it must not be inferred that any item shown is included with the property.

Cow & Co

LONDON