



Berrylands, 18 Highwoods Avenue, Bexhill-on-Sea, East Sussex, TN39 4NN

Guide Price £650,000 To £675,000 A Stunning Four Bedroom Detached Family Home £650,000

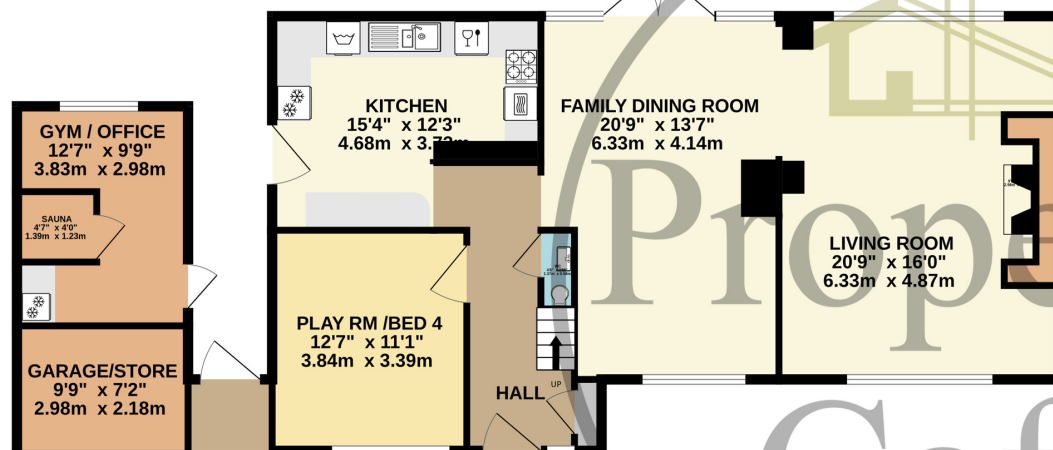




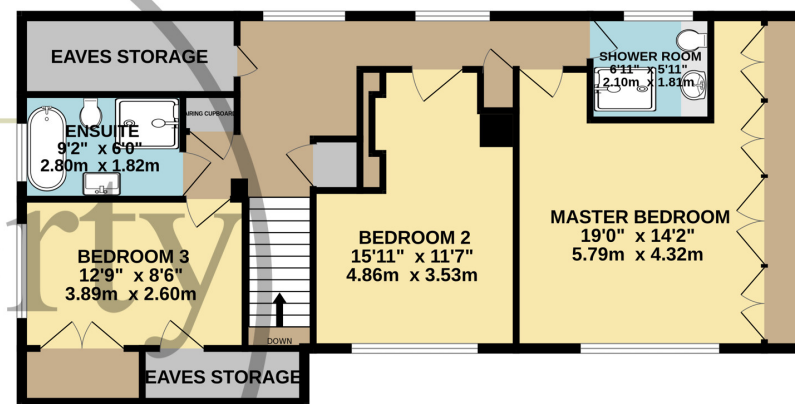
GUIDE PRICE £650,000 to £675,000. This is one of our 'FOCUS PROPERTY' and is now being offered for sale at the GUIDE PRICE OF £650,000 to £675,000.... The Property Café Is Delighted To Offer For Sale : This Substantially Extended & Spacious Home * With Accommodation & Benefits That Include: Four Good Size Double Bedrooms * A Dual Aspect Family Lounge With Hand Built Fireplace * Additional Dual Aspect Family Dining Room * Bespoke Fitted Kitchen With Built In Appliances * A Very Spacious Master Bedroom Suite With Full Width Storage * Three First Floor Double Bedrooms & An Additional Spacious Ground Floor Bedroom 4 * Beautifully Presented Decoration Throughout & Ample Storage Throughout This Home * Immaculate Inner Hall & Landing * Beautiful Bathrooms with Bespoke Suites * Garden Office/Gym with Sauna * Low Maintenance Garden With Resin Bond Patio * Central Heated & D.Glazed Throughout * Immaculate & Stylish Decoration Throughout * Ample Off Road Parking To The Front * Highly Sought After Location * Outskirts Of Little Common Village * Close To Amazing Walks @ Highwoods * Lovely Peaceful Neighbourhood * Internal Viewing Highly Recommended Call Our Bexhill Team On 01424 224488



GROUND FLOOR
1196 sq.ft. (111.1 sq.m.) approx.



1ST FLOOR
898 sq.ft. (83.4 sq.m.) approx.



TOTAL FLOOR AREA : 2094 sq.ft. (194.6 sq.m.) approx.

Whilst every attempt has been made to ensure the accuracy of the floorplan contained here, measurements of doors, windows, rooms and any other items are approximate and no responsibility is taken for any error, omission or mis-statement. This plan is for illustrative purposes only and should be used as such by any prospective purchaser. The services, systems and appliances shown have not been tested and no guarantee as to their operability or efficiency can be given.

Made with Metropix ©2023





The Property Cafe Is Delighted To Offer For Sale : This Substantially Extended & Spacious Home * With Accommodation & Benefits That Include: Four Good Size Double Bedrooms * A Dual Aspect Family Lounge With Hand Built Fireplace * Additional Dual Aspect Family Dining Room * Bespoke Fitted Kitchen With Built In Appliances * A Very Spacious Master Bedroom Suite With Full Width Storage * Three First Floor Double Bedrooms & An Additional Spacious Ground Floor Bedroom 4 * Beautifully Presented Decoration Throughout & Ample Storage Throughout This Home * Immaculate Inner Hall & Landing * Beautiful Bathrooms with Bespoke Suites * Garden Office/Gym with Sauna * Low Maintenance Garden With Resin Bond Patio * Central Heated & D.Glazed Throughout * Immaculate & Stylish Decoration Throughout * Ample Off Road Parking To The Front * Highly Sought After Location * Outskirts Of Little Common Village * Close To Amazing Walks @ Highwoods * Lovely Peaceful Neighbourhood * Internal Viewing Highly Recommended Call Our Bexhill Team On 01424 224488





GUIDE PRICE £650,000 to £675,000. This is one of our 'FOCUS PROPERTY' and is now being offered for sale at the **GUIDE PRICE OF £650,000 to £675,000.** For any additional details or indeed to arrange to view please contact our Bexhill Sales Team On 01424 224488..... The property is situated within walking distance to Little Common Village which is fortunate to have an excellent range of shops and amenities serving the local residents. Within the village itself you will discover all the shops you may need on a daily basis, most are independently owned and have been in existence for many years along with a late opening Tesco express. There is also a Doctors surgery, dentist, local pub, restaurants, pharmacy & post office. There is a regular bus services to Eastbourne and Hastings. Cooden mainline railway station is only short distance away providing direct routes in to Gatwick & central London. There is also a local primary school within the village and secondary Schools a short distance away in Bexhill.

- Guide Price £650,000 To £675,000
- Four Good Size Double Bedrooms
- Substantially Extended & Spacious Home
- Dual Aspect Family Lounge With Fireplace
- Additional Dual Aspect Family Dining Room
- Bespoke Fitted Kitchen With Built In Appliances
 - Spacious Master Bedroom Suite
 - Three First Floor Double Bedrooms
 - Spacious Ground Floor Bedroom 4
- Beautifully Presented Decoration Throughout
 - Ample Storage Throughout This Home
 - Immaculate Inner Hall & Landing

- Beautiful Bathrooms with Bespoke Suites
 - Garden Office/Gym with Sauna
- Low Maintenance Garden With Resin Bond Patio
 - Cental Heated & D.Glazed Throughout
- Immaculate & Stylish Decoration Throughout
 - Ample Off Road Parking To The Front
 - Highly Sought After Location
 - Outskirts Of Little Common Village
 - Close To Amazing Walks @ Highwoods
 - Lovely Peaceful Neighbourhood
- Internal Viewing Highly Recommended

www.propertycafe.co



01424 224488