



T: 01909 509001  
E: [info@bartropanddilks.co.uk](mailto:info@bartropanddilks.co.uk)  
W: [www.bartropanddilks.co.uk](http://www.bartropanddilks.co.uk)  
A: 78 Bridge Street, Worksop, S80 1JA

FOR SALE

£135,000

239 Kilton Road, Worksop, Nottinghamshire. S80 2EA



Viewing is most highly recommended for this well presented and decorated two bedroom semi detached home that has gas central heating and uPVC double glazed windows. Being set within this much sought after and of possible interest for first time buyers, the property is well placed for local amenities with the accommodation comprising of; lounge, inner lobby, dining room and well fitted kitchen. On the first floor; landing, two double bedrooms and white fitted bathroom suite. Outside; generous rear garden with lawn and decking, outhouse. Viewing Advised.



## Ground Floor

### Lounge 4.24m x 3.57m (13' 11" x 11' 9")

With a front facing bay window, entrance door, central heating radiator, laminate flooring.

### Inner Lobby

With storage.

### Dining Room 3.66m x 3.48m (12' 0" x 11' 5")

With a rear facing window, door with stairs to the first floor, laminate flooring.

### Kitchen 3.90m x 2.24m (12' 10" x 7' 4")

With a good range of fitted wall and base units, worksurfaces, bowl and half sink unit with mixer tap, plumbing for an automatic washing machine, hob, oven and extractor, side window and door.

## First Floor

### Landing

### Bedroom One 3.66m x 3.60m (12' 0" x 11' 10")

With a front facing window, central heating radiator.

### Bedroom Two 3.60m x 3.05m (11' 10" x 10' 0")

With a rear facing window, central heating radiator, storage cupboard.

## Bathroom

Fitted in a white suite with a panelled bath with electric shower over, W.C, wash hand basin, part tiled walls, cupboard housing the boiler, rear facing double glazed window.

## Outside

### Rear Garden

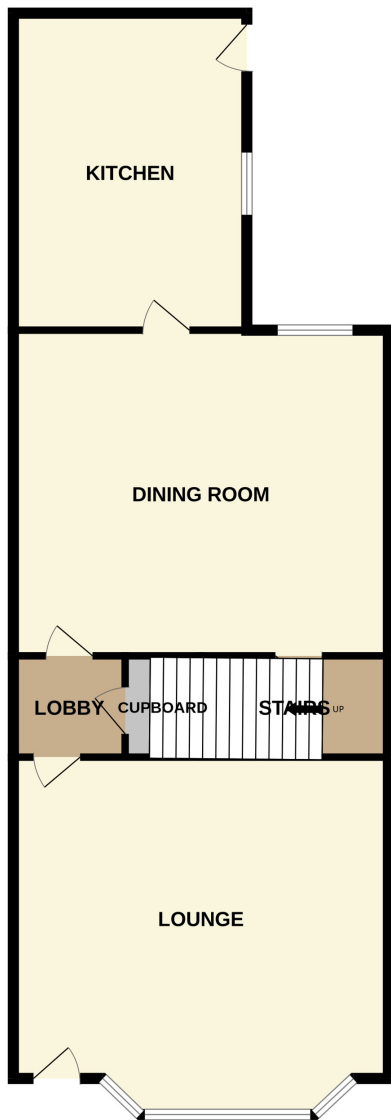
Being a generous size with lawn, decking and outhouse.



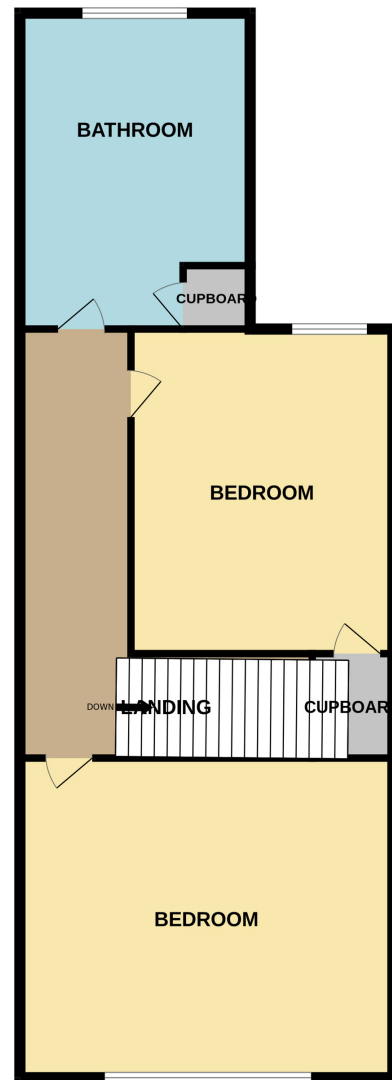




GROUND FLOOR



1ST FLOOR



Whilst every attempt has been made to ensure the accuracy of the floorplan contained here, measurements of doors, windows, rooms and any other items are approximate and no responsibility is taken for any error, omission or mis-statement. This plan is for illustrative purposes only and should be used as such by any prospective purchaser. The services, systems and appliances shown have not been tested and no guarantee as to their operability or efficiency can be given.  
Made with Metropix ©2025