



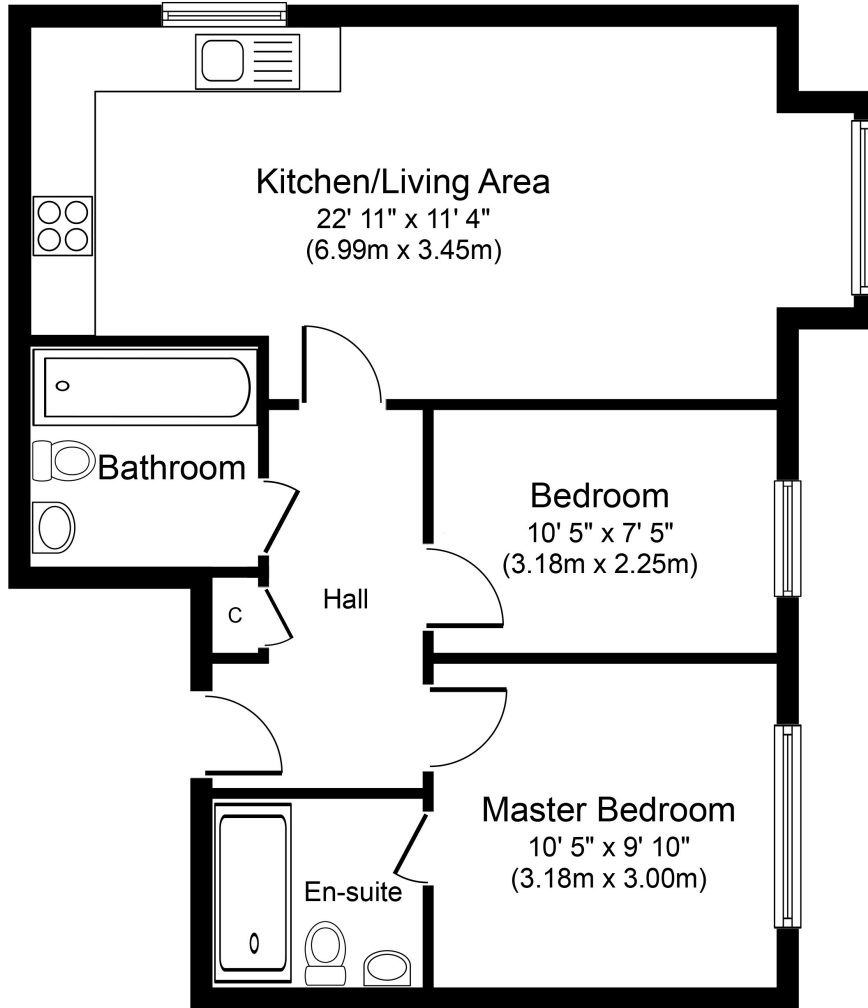
3 Eaton House, 101 Chertsey Road, Ashford, Surrey, TW15

1SF

VERY WELL PRESENTED TWO BEDROOM, TWO BATHROOM APARTMENT IN MODERN PURPOSE BUILT DEVELOPMENT IDEALLY LOCATED FOR TOWN CENTRE, MAINLINE TRAIN STATION & LOCAL MOTORWAY NETWORKS. The property benefits from a spacious lounge/diner, luxury fitted kitchen, two well-proportioned bedrooms (en-suite to Bedroom 1), further luxury bathroom suite, allocated parking & a long lease. Viewings Highly Recommended.

ROOM DESCRIPTIONS

FLOORPLAN & EPC



Ground Floor
 Approximate Floor Area
 545 sq. ft.
 (50.6 sq. m.)

Energy Efficiency Rating		Current	Potential
Very energy efficient - lower running costs			
(92+)	A		
(81-91)	B		
(69-80)	C	82	82
(55-68)	D		
(39-54)	E		
(21-38)	F		
(1-20)	G		
Not energy efficient - higher running costs			
England, Scotland & Wales		EU Directive 2002/91/EC	