



9 Whittle Court,  
Knowlhill, Milton Keynes, MK5 8FT

Tel: 01908 231 551   
mail@elevationstateagents.com



**7 Grosmont Close, Emerson Valley, Milton  
Keynes, Buckinghamshire, MK4 2EW**

**£230,000 Freehold**

- Garden & Parking
- House Semi
- Newly fitted flooring
- Desirable and Highly Sought-After Location
- Chain Free
- EPC Rating



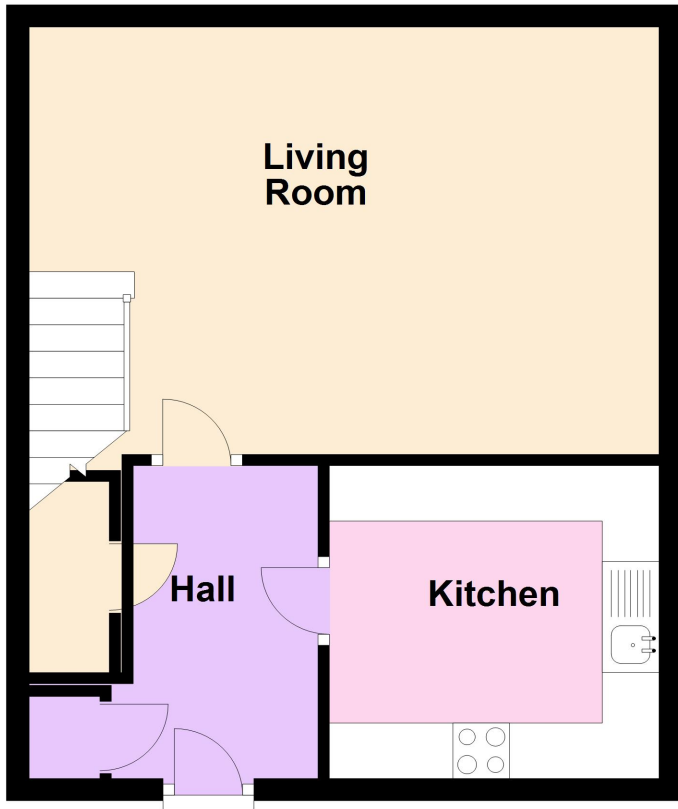
See our full selection of properties online at [www.elevationstateagents.com](http://www.elevationstateagents.com)



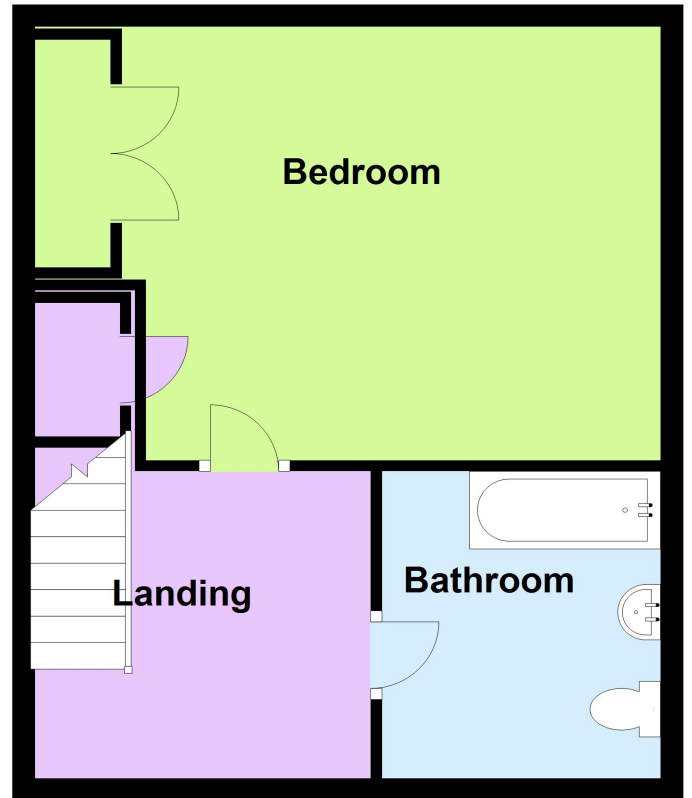
## Disclaimer

Whilst we have endeavoured to prepare our sales particulars accurately none of the services, appliances or equipment have been tested. A buyer should satisfy themselves on such matters prior to purchase. Any measurements or distances mentioned in these particulars are for guide reference only. If such particulars are fundamental to a purchase, buyers should rely on their own enquiries. All enquiries should be directed to Elevation Estate Agents in the first instance.

## Ground Floor



## First Floor



Floor plans are for layout purposes only. Measurements are approximate and subject to inaccuracies  
Plan produced using PlanUp.