



Hertford Mews, Billy Lows Lane, Potters Bar, EN6 1XW

£164,995

- CHAIN FREE
- RECENT MODERN KITCHEN
- VIEWS OVER COMMUNAL AWARD WINNING GARDENS
- OVERNIGHT GUEST SUITE FOR VISITORS
- LAUNDRY ROOM
- IMMACULATELY PRESENTED
- RECENTLY REMODELLED SHOWER ROOM
- COMMUNAL LOUNGE WITH KITCHENETTE
- WALKING DISTANCE TO THE HIGH STREET

108, High Street, Potters Bar, EN6 5AT

01707 245 555

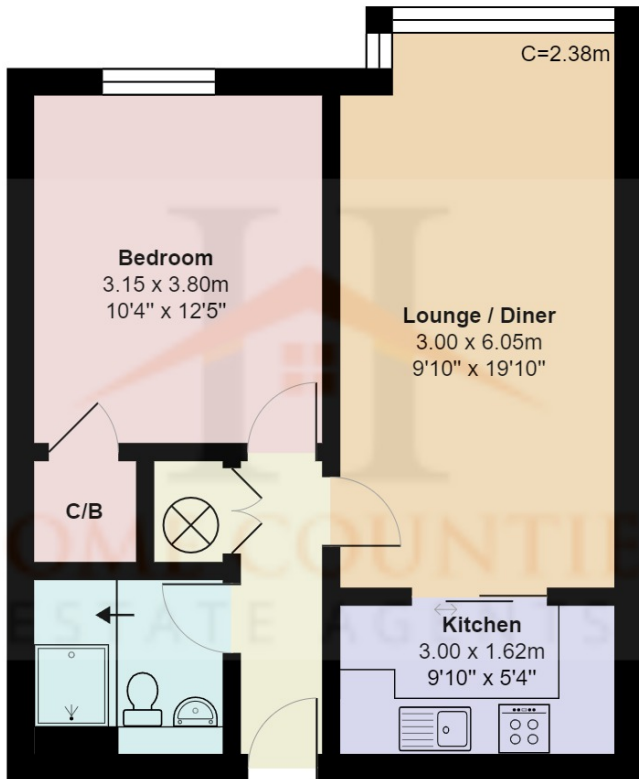
www.home-counties.com

Hertford Mews, Billy Lows Lane, Potters Bar, . EN6 1XW

£164,995 Leasehold

This delightful one bedroom apartment on the second floor of the popular development Hertford Mews, located just a short walk to shops and restaurants and both Highview & Annandale Medical Centres and Parkfield Open Space. The property is offered in immaculate condition and benefits from a recently fitted modern kitchen with Neff appliances, southerly views over the award winning gardens, recently remodelled shower room and new hot and cold water tanks.

Hertford Mews is a retirement block with assisted living, there is a manager on site and pull cords in the rooms in case of emergencies, there is a communal residents lounge and award wining gardens, residents laundry room and overnight guest suites available for visitors along with guest and resident off street parking.



Second Floor
Area: 47.3 m² ... 509 ft²

Hertford Mews, Hertfordshire EN6

Total Area: 47.3 m² ... 509 ft²

All measurements are approximate and for display purposes only



Energy Efficiency Rating		Current	Potential
Very energy efficient - lower running costs			
(92+)	A		
(81-91)	B		
(69-80)	C	75	82
(55-68)	D		
(39-54)	E		
(21-38)	F		
(1-20)	G		
Not energy efficient - higher running costs			
England, Scotland & Wales		EU Directive 2002/91/EC	

